

# Legend

## Sampled Locations - Water & Berry (Through May '06)

- groundwater
- ⊕ spring
- ☆ seep
- ⊕ surface water
- ⊕ berry (washed and unwashed)
- ⊕ outfalls (approximated)

--- (Estimated) Existing Creek Centerline (based on discrete surveyed points by Larry Steele & Associates)

--- (Estimated) Extent of Historical Creek (Based on existing topography, field observations and historic aerial photos provided by the City of Bellingham and US EPA)

■ Little Squalicum Park (COB data source)

■ Building Outlines (COB data source)

— Cement Plant Pier (COB data source)

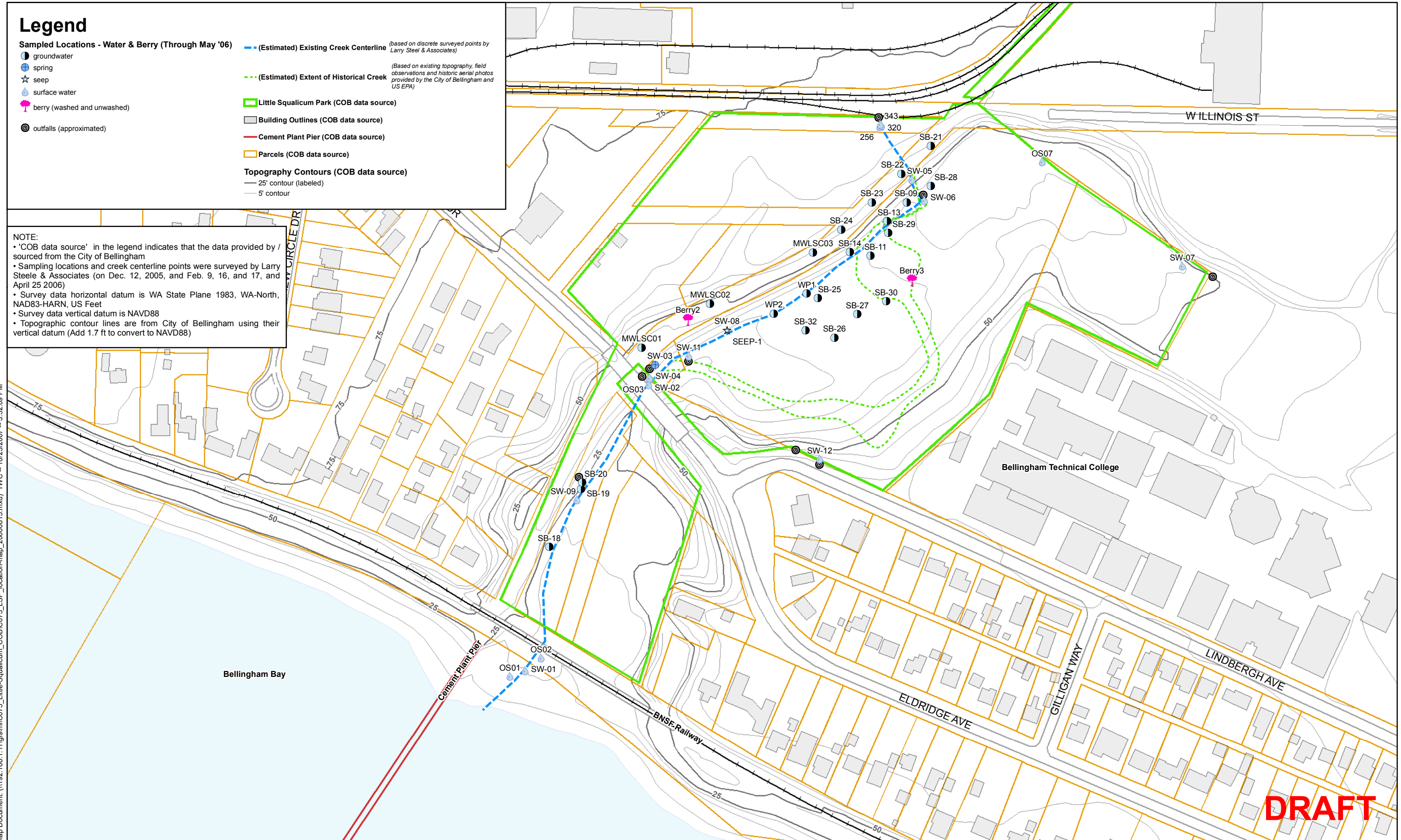
■ Parcels (COB data source)

### Topography Contours (COB data source)

- 25' contour (labeled)
- 5' contour

NOTE:  
 • 'COB data source' in the legend indicates that the data provided by / sourced from the City of Bellingham  
 • Sampling locations and creek centerline points were surveyed by Larry Steele & Associates (on Dec. 12, 2005, and Feb. 9, 16, and 17, and April 25 2006)  
 • Survey data horizontal datum is WA State Plane 1983, WA-North, NAD83-HARN, US Feet  
 • Survey data vertical datum is NAVD88  
 • Topographic contour lines are from City of Bellingham using their vertical datum (Add 1.7 ft to convert to NAVD88)

Map Document: (\\192.168.1.11\gis\m\C075\_Little-Squalicum\_COB\C075\_LSP\_location-map\_20060815.mxd) TWC -- 10/23/2007 -- 3:52:09 PM



**DRAFT**

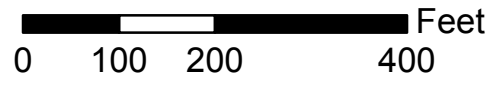


Figure 2-3  
**Water and Berry Sampling Locations**  
 Little Squalicum Park RI, Bellingham, WA