

# Legend

## Testpits - Historical (Landau '93)

Testpits - Historical (Landau '93)

(Estimated) Existing Creek Centerline (based on discrete surveyed points by Larry Steel & Associates)

(Estimated) Extent of Historical Creek (Based on existing topography, field observations and historic aerial photos provided by the City of Bellingham and US EPA)

Little Squalicum Park (COB data source)

Building Outlines (COB data source)

Cement Plant Pier (COB data source)

Parcels (COB data source)

Topography Contours (COB data source)

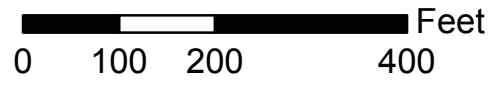
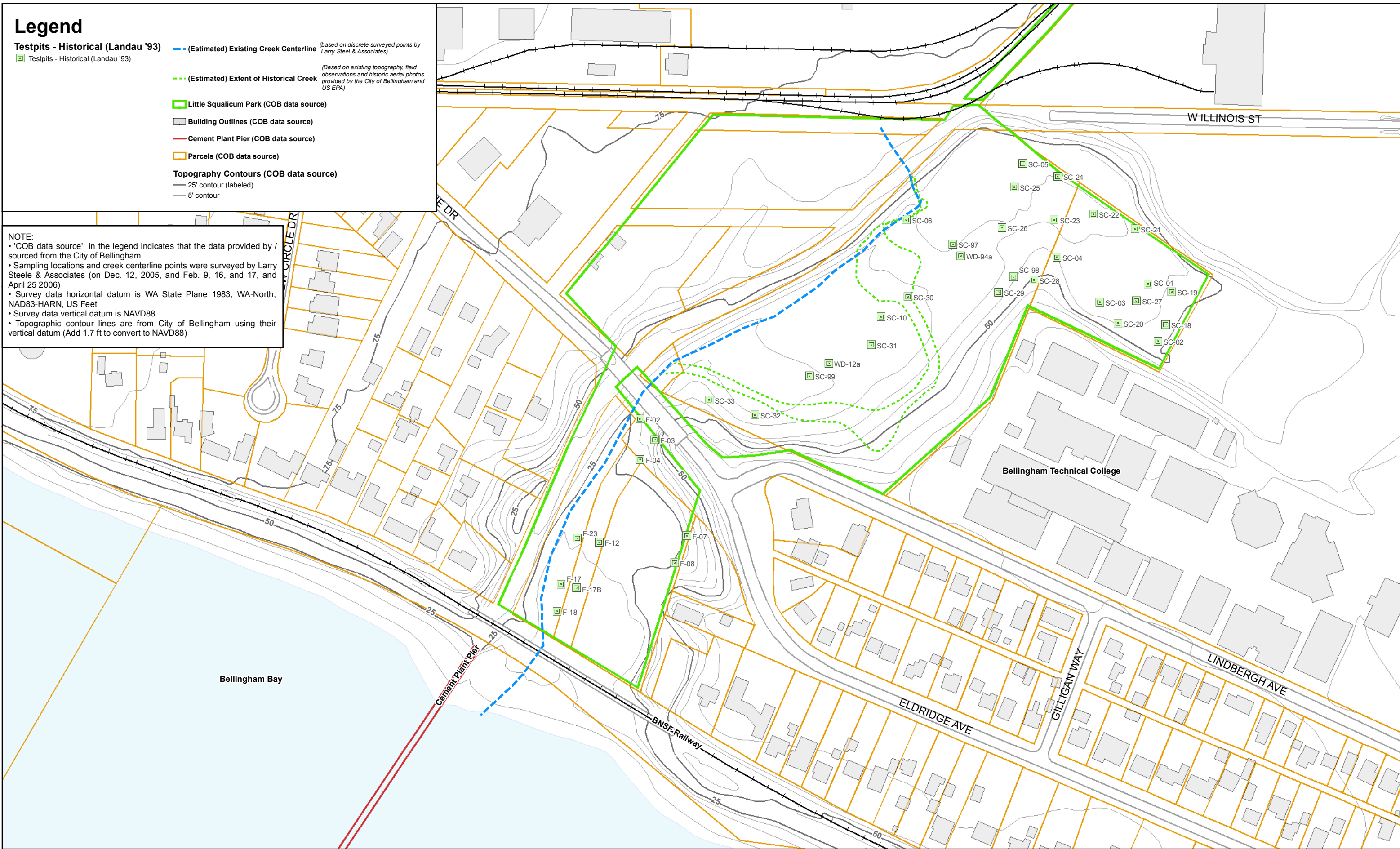
25' contour (labeled)

5' contour

### NOTE:

- 'COB data source' in the legend indicates that the data provided by / sourced from the City of Bellingham
- Sampling locations and creek centerline points were surveyed by Larry Steele & Associates (on Dec. 12, 2005, and Feb. 9, 16, and 17, and April 25 2006)
- Survey data horizontal datum is WA State Plane 1983, WA-North, NAD83-HARN, US Feet
- Survey data vertical datum is NAVD88
- Topographic contour lines are from City of Bellingham using their vertical datum (Add 1.7 ft to convert to NAVD88)

Map Document: (\\192.168.1.11\gis\m\C075\_Little-Squalicum\_COB\C075\_LSP\_location-map\_20060815.mxd) TWC -- 10/15/2007 -- 5:38:04 PM



**DRAFT**

**Figure 2-4**  
**Historical Geotechnical Sampling Locations**  
 Little Squalicum Park RI, Bellingham, WA