

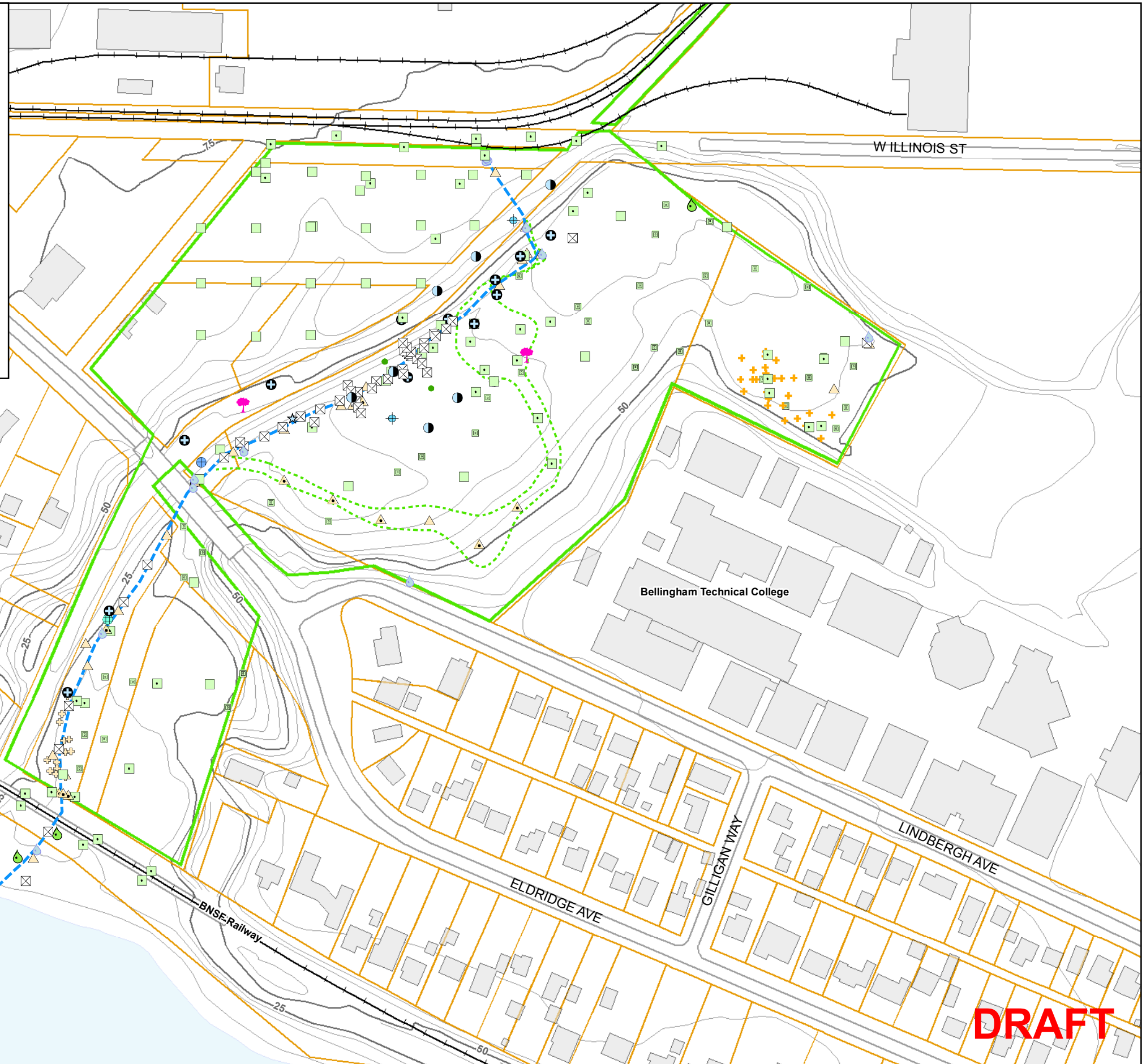
Legend

- Sampled Locations - All (Through October 2006)**
- groundwater
 - ⊕ groundwater + soil (surface and subsurface)
 - ⊕ groundwater + soil (subsurface)
 - ⊕ groundwater + sediment (surface and subsurface)
 - spring
 - ☆ seep
 - surface water
 - surface water + sediment (surface)
 - soil (surface)
 - soil (subsurface)
 - ⊕ soil (surface and subsurface)
 - ⊗ soil (spoil pile)
 - ▲ sediment (surface)
 - ▲ sediment (surface and subsurface)
 - berry (washed and unwashed)
- Testpits (Integral '05)**
- ⊕ Reconnaissance Test Pit (RTP)
 - ⊕ Shovel Test Pit (STP)
- Geotechnical Testpits (Landau '93)**
- ⊕
- (Estimated) Existing Creek Centerline** (based on discrete surveyed points by Larry Steele & Associates)
- (Estimated) Extent of Historical Creek** (Based on existing topography, field observations and historic aerial photos provided by the City of Bellingham and US EPA)
- Little Squalicum Park (COB data source)**
- Building Outlines (COB data source)**
- Cement Plant Pier (COB data source)**
- Parcels (COB data source)**
- Topography Contours (COB data source)**
- 25' contour (labeled)
 - 5' contour

NOTE:

- 'COB data source' in the legend indicates that the data provided by / sourced from the City of Bellingham
- Sampling locations and creek centerline points were surveyed by Larry Steele & Associates (on Dec. 2, 2005, and Feb. 9, 16, and 17, and April 25 2006)
- Survey data horizontal datum is WA State Plane 1983, WA-North, NAD83-HARN, US Feet
- Survey data vertical datum is NAVD88
- Topographic contour lines are from City of Bellingham using their vertical datum (Add 1.0 ft to convert to NAVD88)

Map Document: (F:\local_working_files\C075_Little-Squalicum_COB\C075_LSP_location-map_20060815.mxd) TWC -- 6/10/2008 -- 4:36:13 PM



DRAFT



Figure 3-1
Sampling Locations
 Little Squalicum Park RI, Bellingham, WA