

Notes: The following abbreviations are used in Figures 6-3 through 6-6.

Nap	= Naphthalene
2-Mnap	= 2-Methylnaphthalene
C1-Nap	= Methylnaphthalenes
Acy	= Acenaphthylene
Ace	= Acenaphthene
Flu	= Fluorene
Phen	= Phenanthrene
Anth	= Anthracene
Fla	= Fluoranthene
Pyr	= Pyrene
BaA	= Benz[a]anthracene
Chr	= Chrysene
BbF	= Benzo[b]fluoranthene
BkF	= Benzo[k]fluoranthene
BaP	= Benzo[a]pyrene
Ind	= Indeno[1,2,3-cd]pyrene
DahA	= Dibenzo[a,h]anthracene
BghiP	= Benzo[ghi]perylene

Y-axis presents the ratio of the individual PAH concentration divided by the total PAH concentration in a sample.

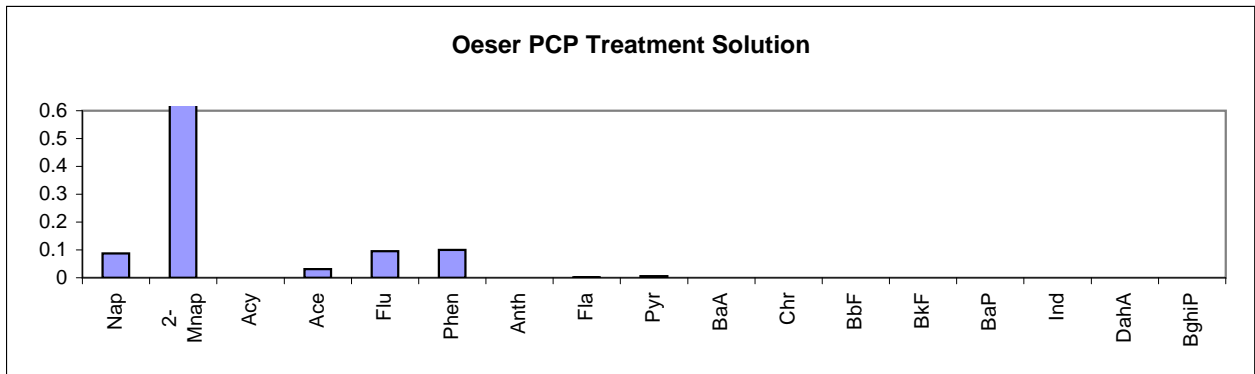
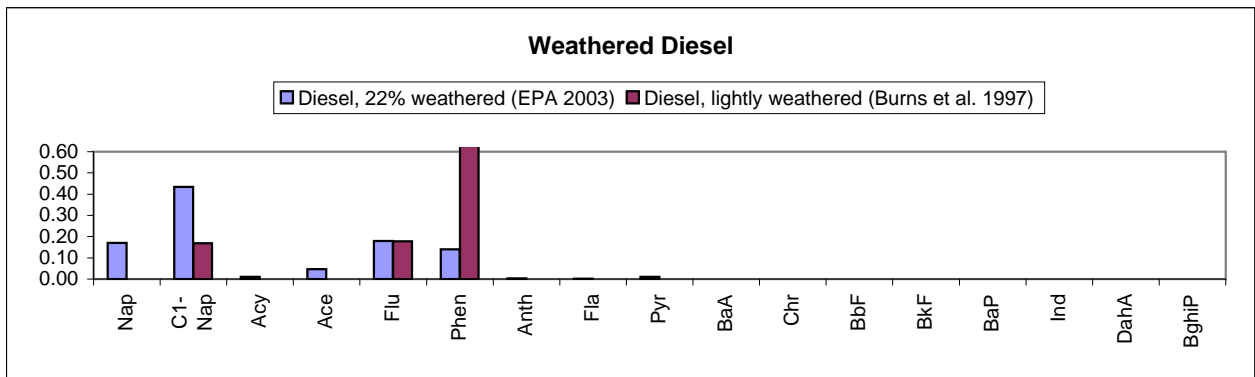
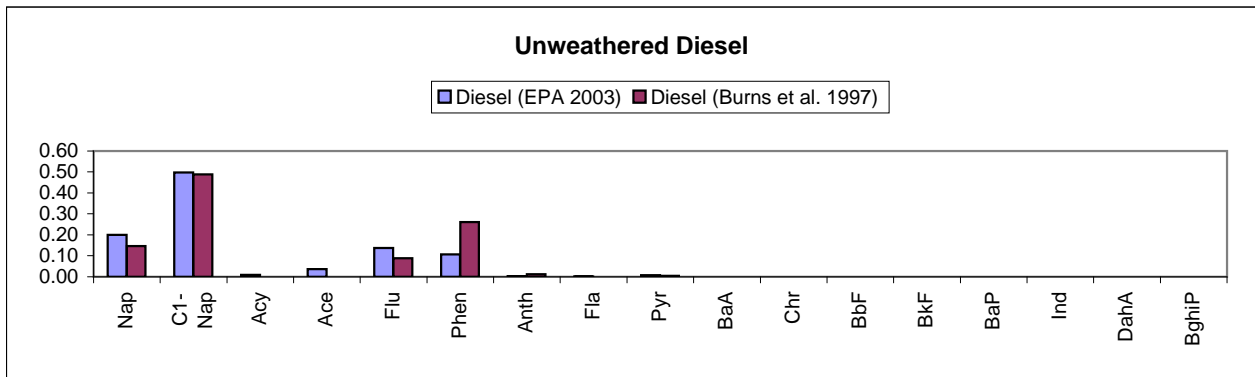
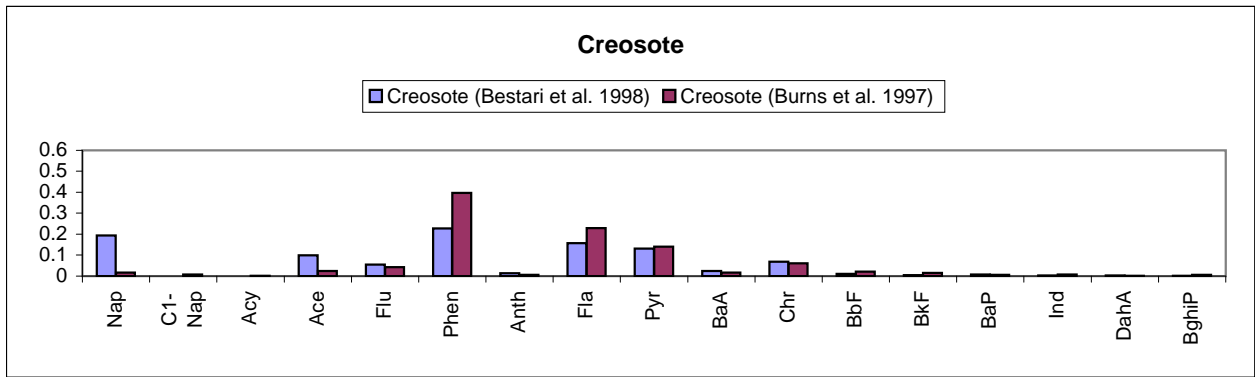


Figure 6-3. PAH Composition of Potential Source Materials

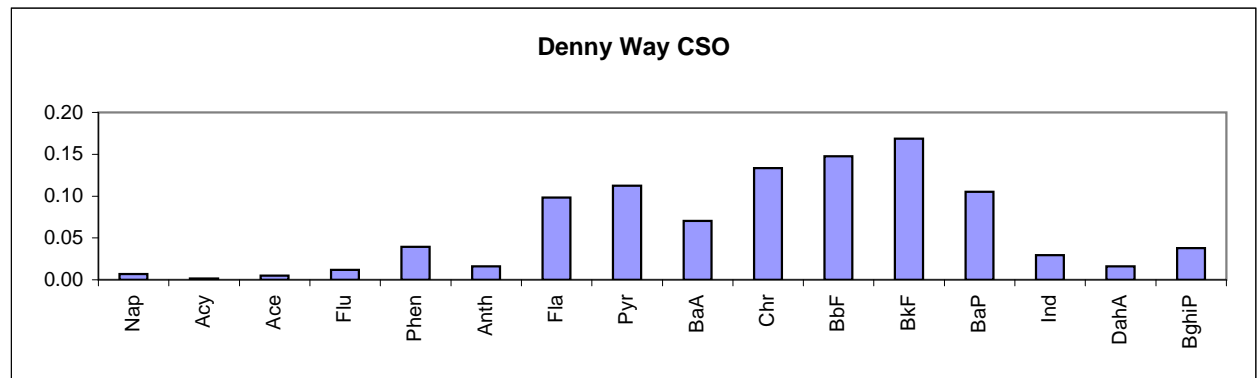
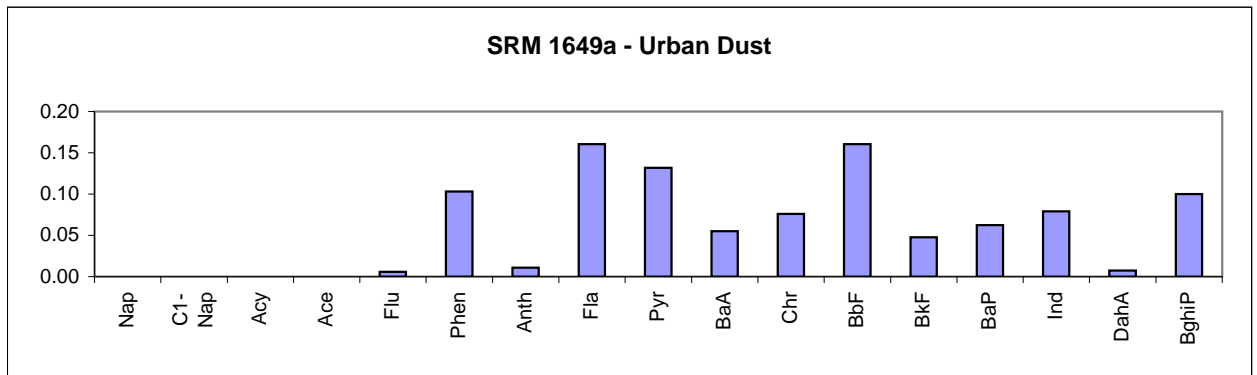
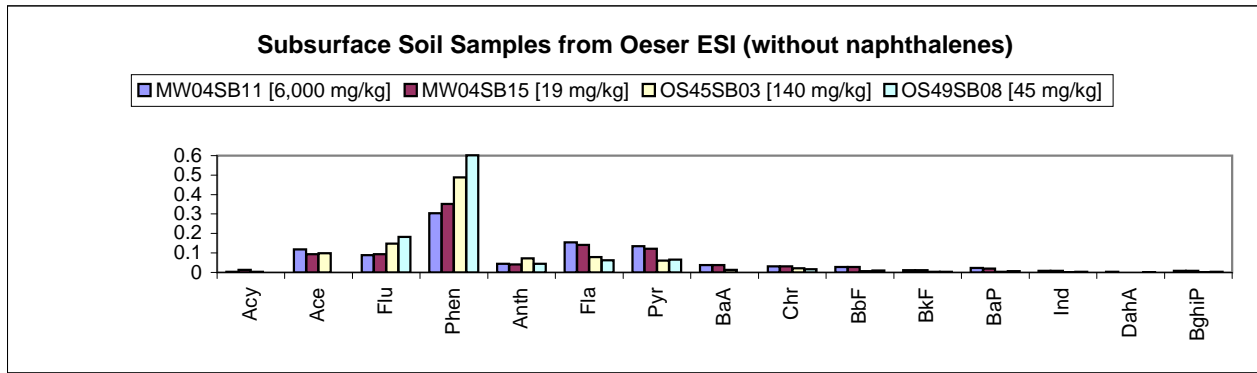
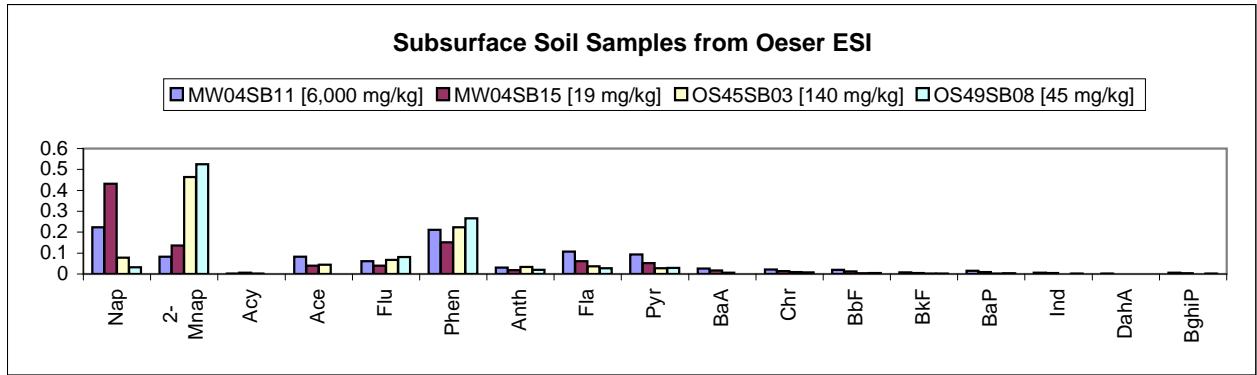


Figure 6-3. PAH Composition of Potential Source Materials (continued)

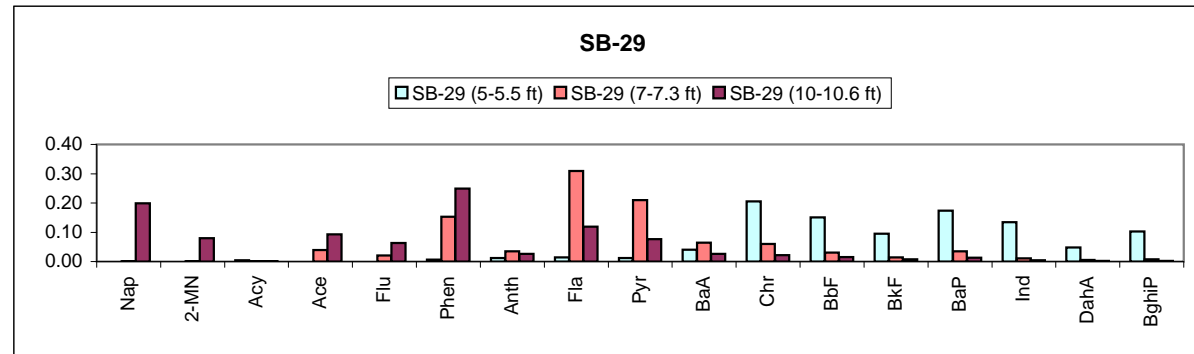
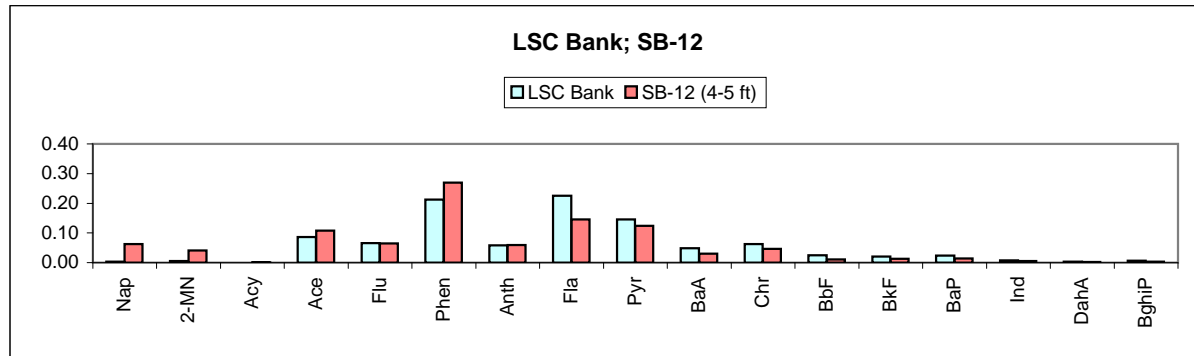
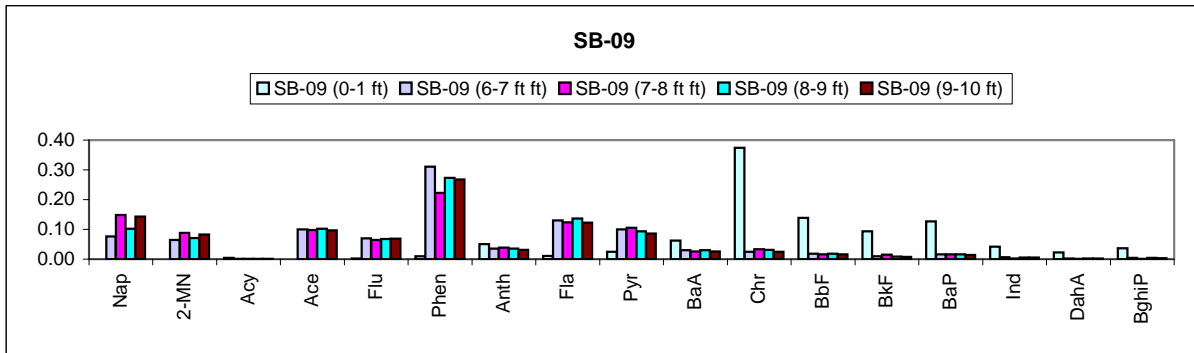
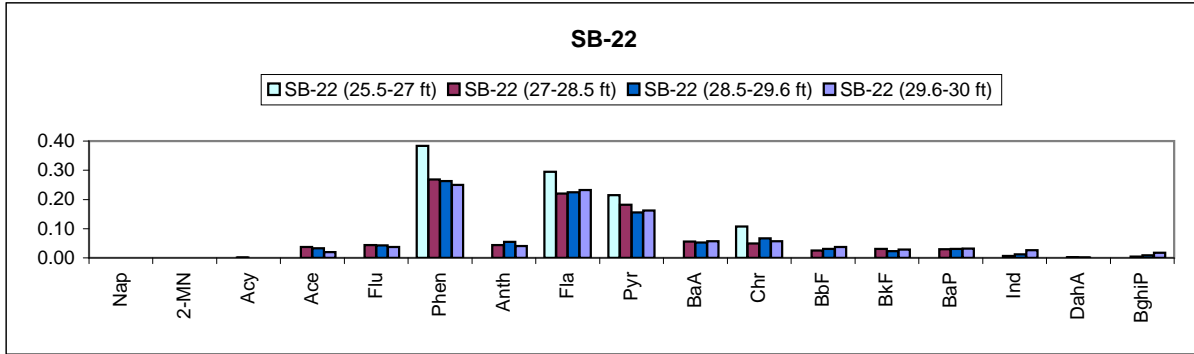


Figure 6-4. PAH Composition of Upper Creek Area Samples

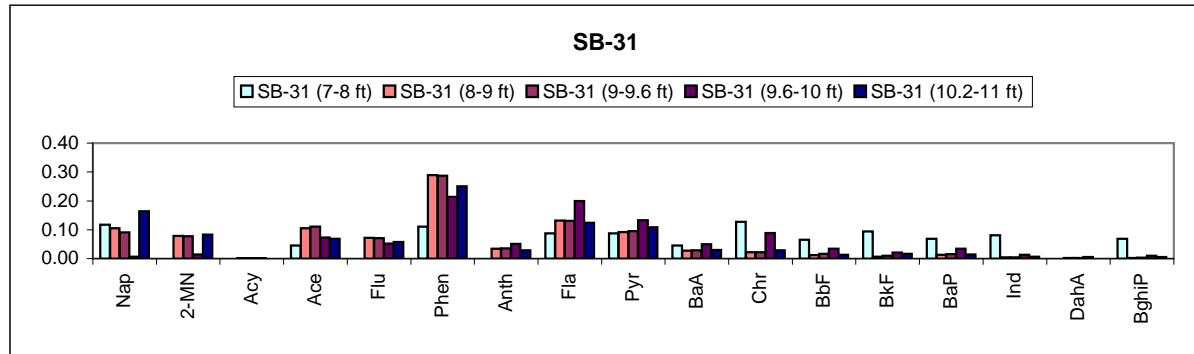
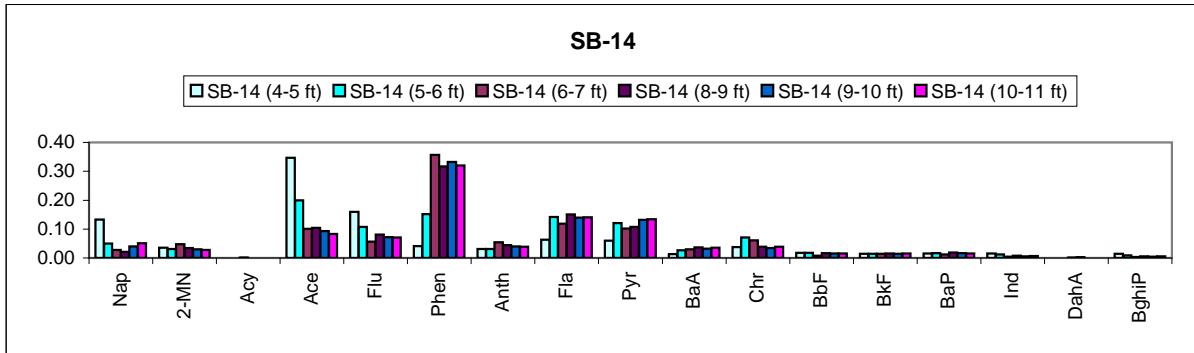
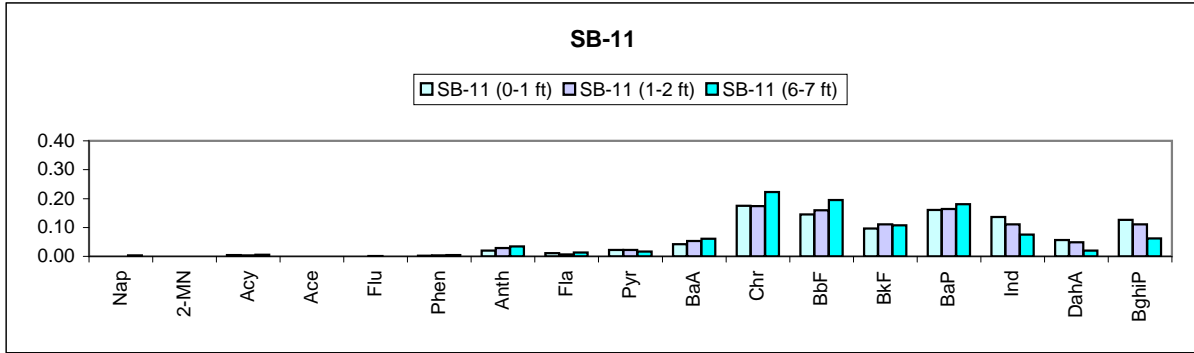


Figure 6-4. PAH Composition of Upper Creek Area Samples (continued)

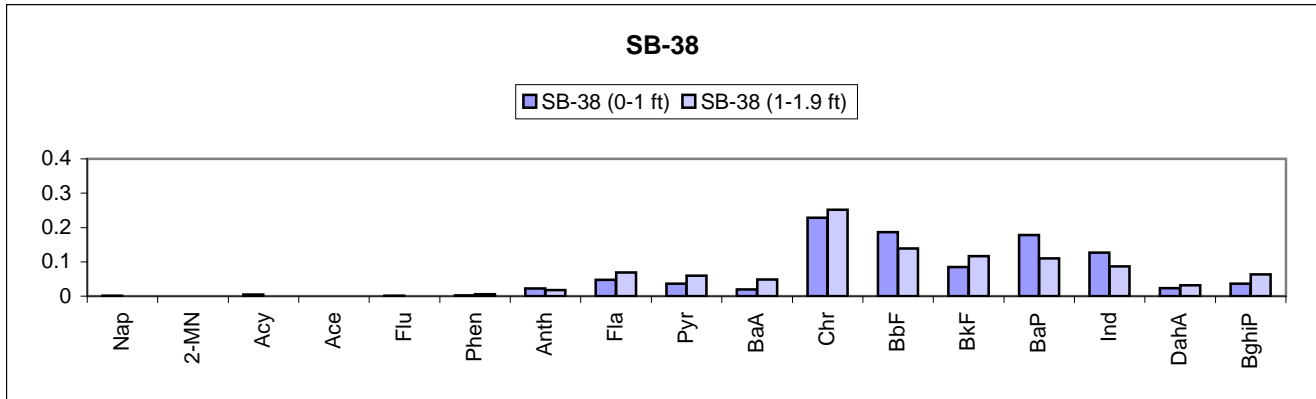
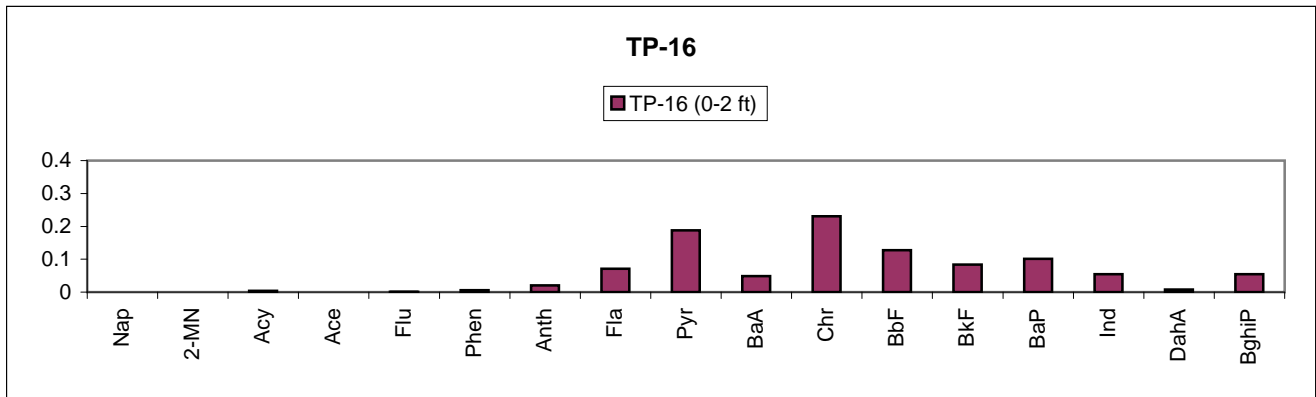
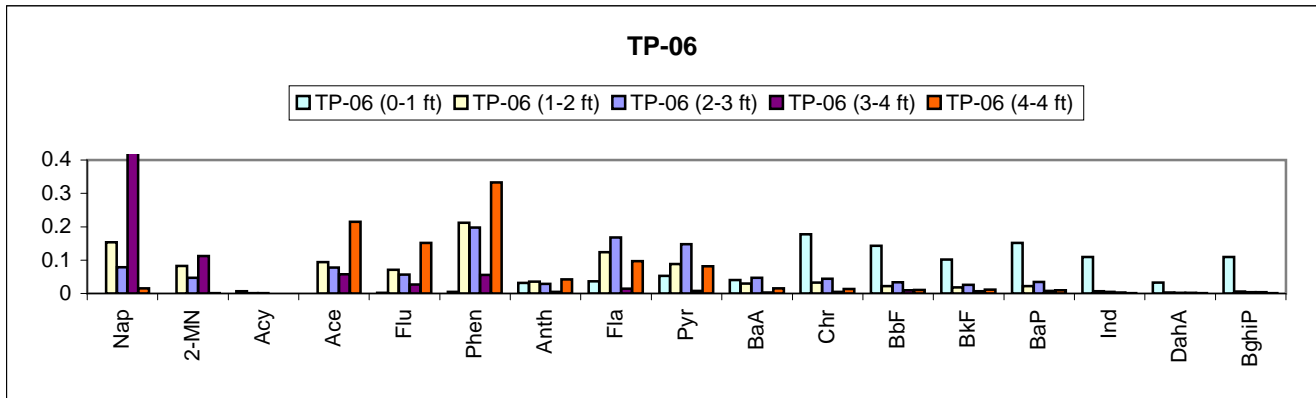
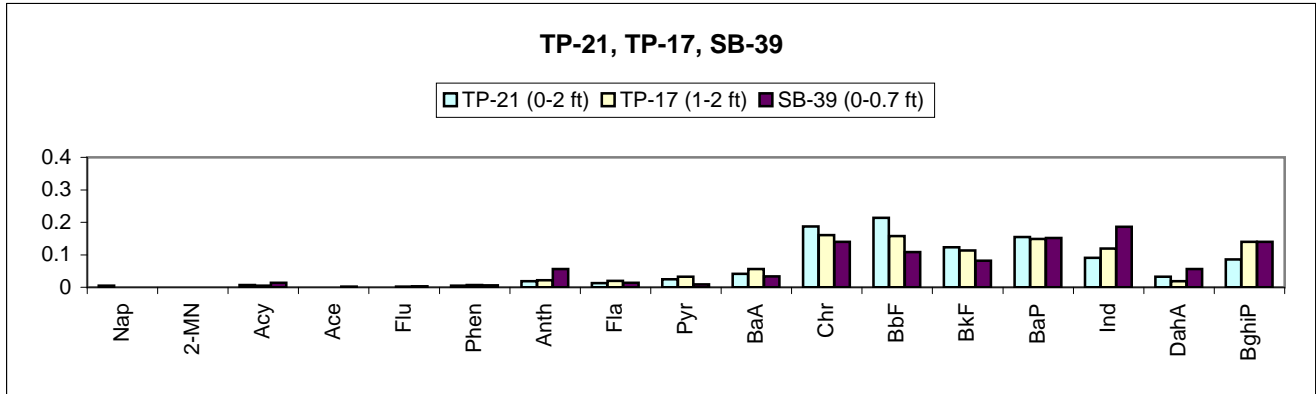


Figure 6-5. PAH Composition of Historic Creek Area Samples

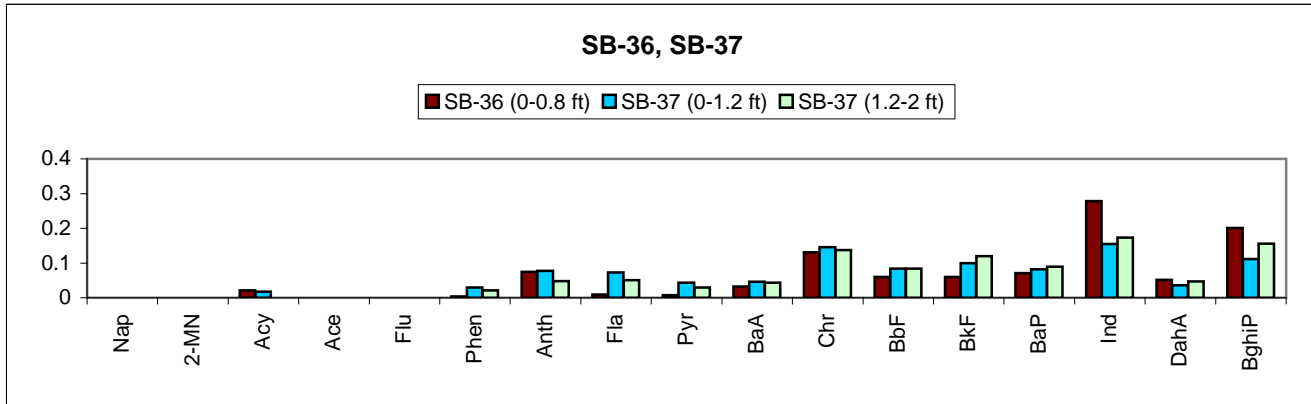
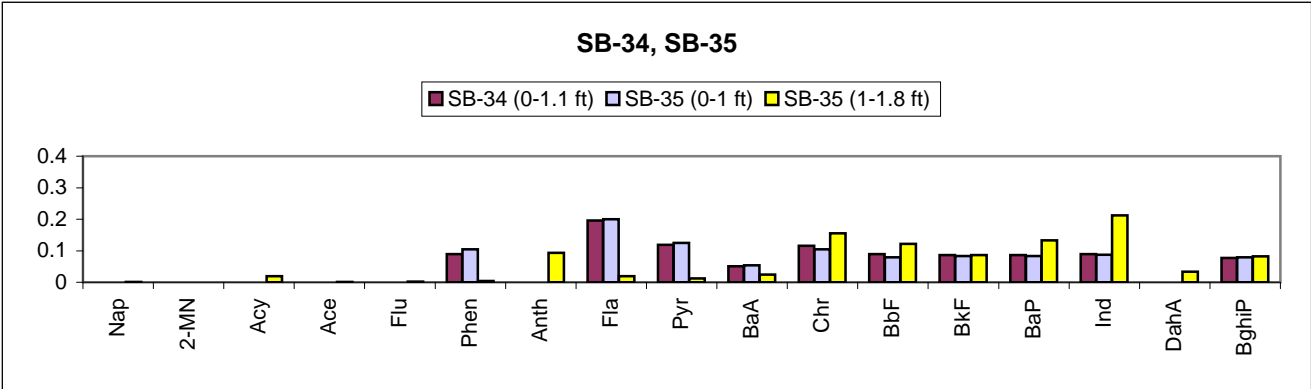


Figure 6-5. PAH Composition of Historic Creek Area Samples (continued)

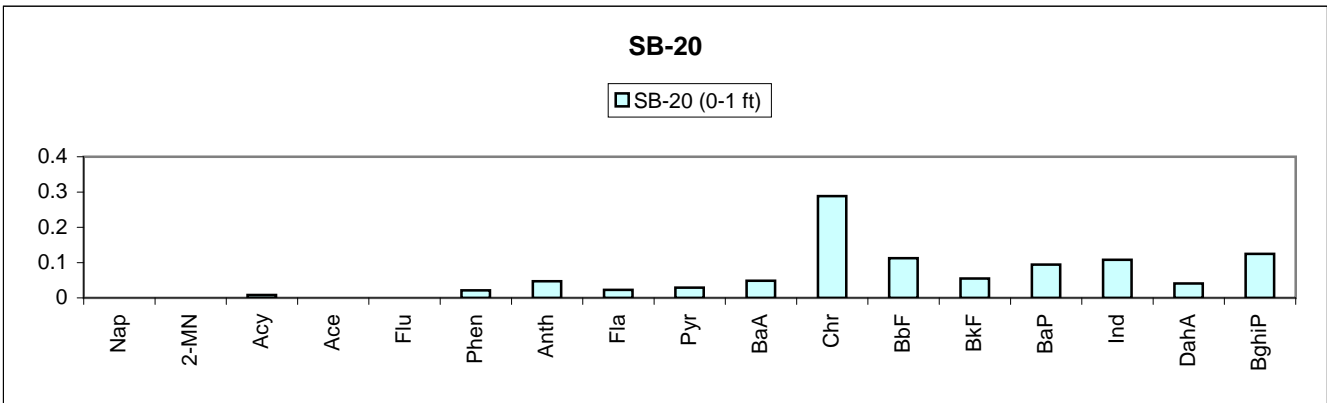
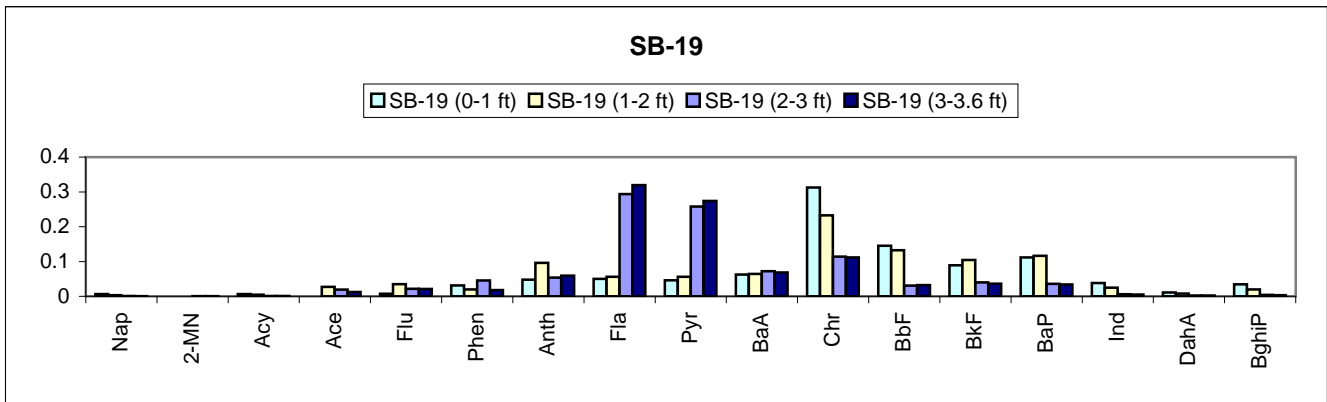


Figure 6-6. PAH Composition of Lower Creek Area Samples