

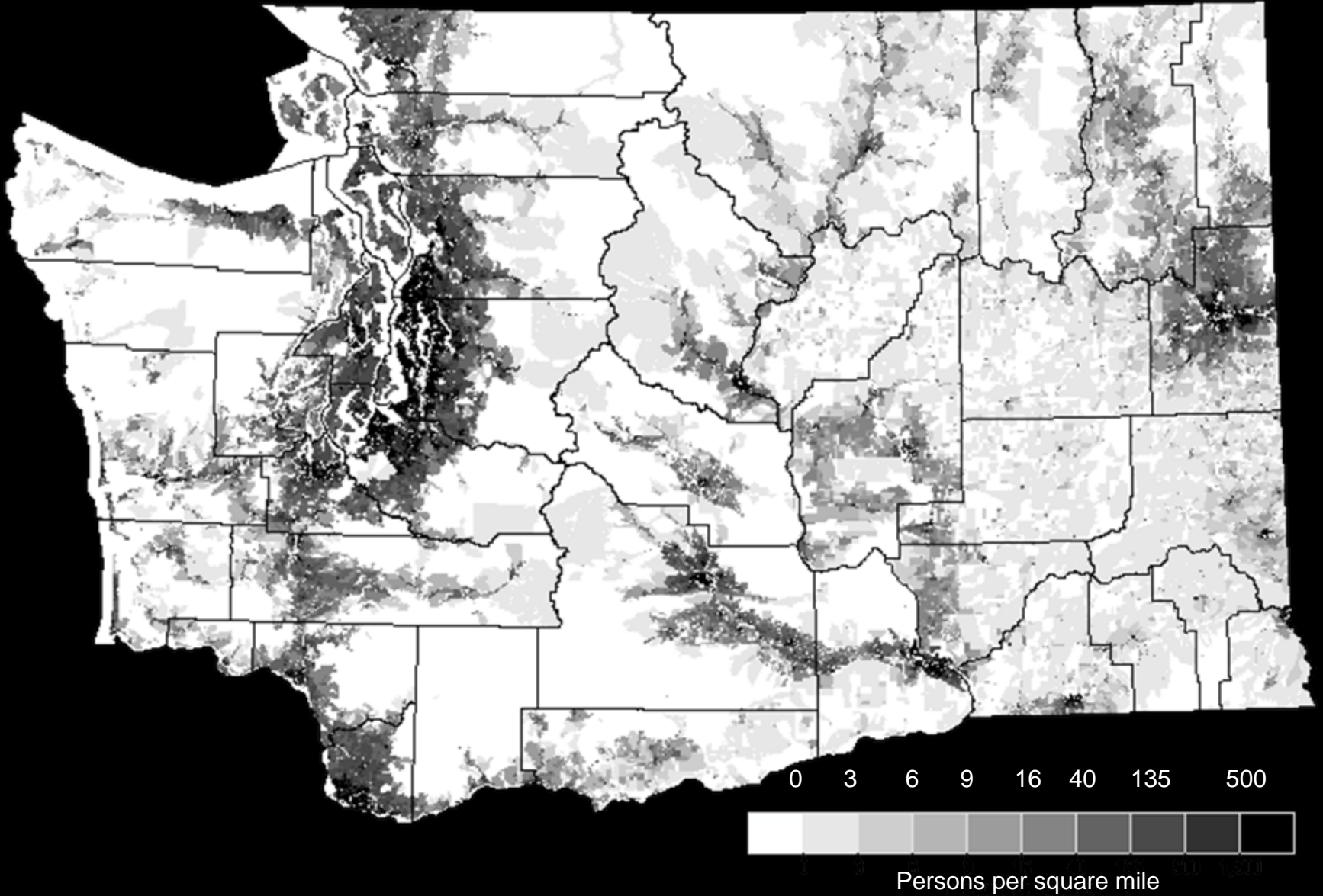
Residential Recycling Infrastructure in WA

Laurie Davies

Solid Waste Program Manager



Population Density (2000)



Common Residential Recyclables

What goes in my new recycling cart?

Yes

Put these items in your recycling cart.



Milk jugs



Plastic bottles
(necks smaller than base)



Paper milk-style cartons



Phone books



Shredded paper



Mail, magazines, mixed
paper and catalogs



Metal cans



Aluminum cans



Newspaper & inserts



Paper bags



Cereal boxes



Cardboard



Paper or frozen food boxes

No

DO NOT put these items in your recycling cart.



Glass



Ceramics



Styrofoam peanuts



Glassware



Batteries



Aerosol cans



Toxic product
containers



Plastic tubs



Plastic lids



Foil



Plastic bags



Light bulbs



Chip bags



Plastic cups



Styrofoam containers



Frozen food bags



Pill bottles



Juice boxes



Metal hangers



Food-contaminated
paper plates and
napkins

Collection Methods



3-Bin (or more)



Dual-Stream



Single-stream

‘Commingled’

Collection \neq Recovery

King County MRF Study (2006) of 4 Puget Sound MRFs

Curbside Material	Sent to Proper Market	Cross-Contaminant or Residue
Newspaper, Mixed Paper	98-99%	1-2% lost
PET	47%	53% lost
HDPE	72%	28% lost
Aluminum	64%	36% lost
Tin	77%	23% lost
Glass	90%	10% lost

Processing Problems



Markets & Capacity

- Very active export market
- New hope for glass
- Anticipated supply in 2010 exceeds current processing capacity at MRFs

King County MRF Study (2006)



Areas of Opportunity

- Every-other-week collection service
- Away-from-home recycling
- Commercial recycling



Product Stewardship Efforts

- Take back programs
- Electronics recycling law
- PH:ARM



Questions?

Laurie Davies
Solid Waste Program Manager
WA Department of Ecology

ldav461@ecy.wa.gov

(360) 407 - 6103

