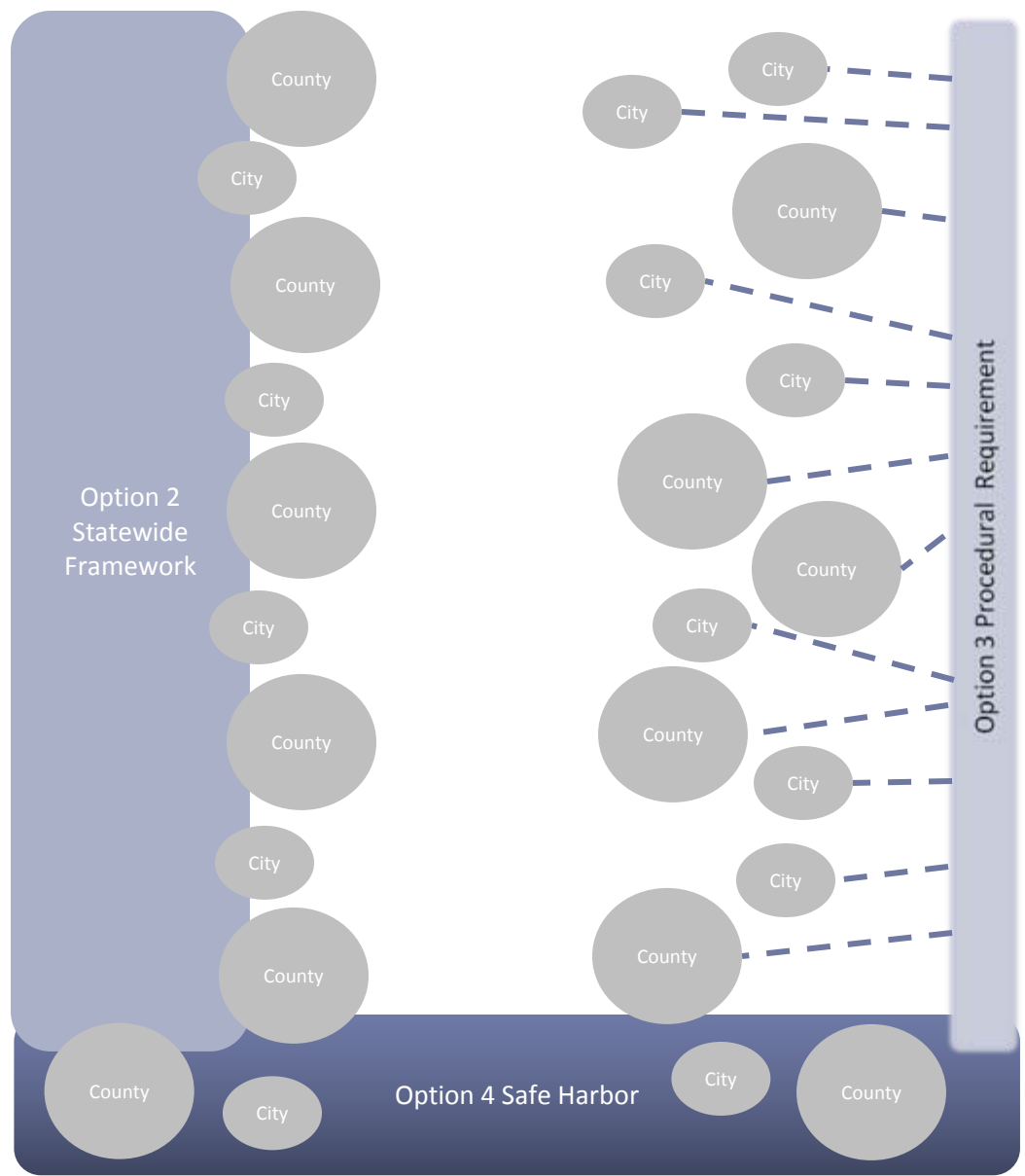
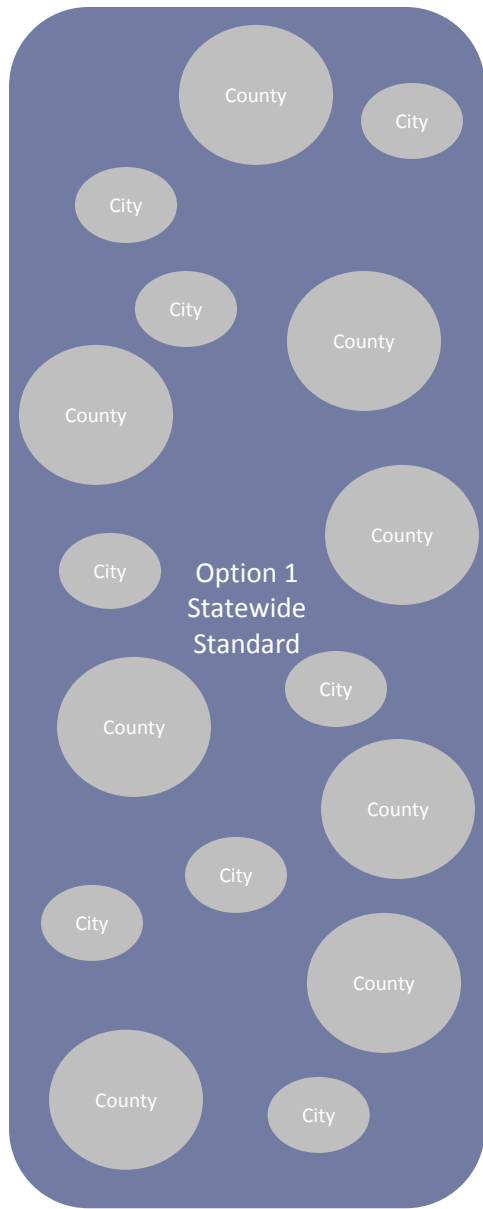
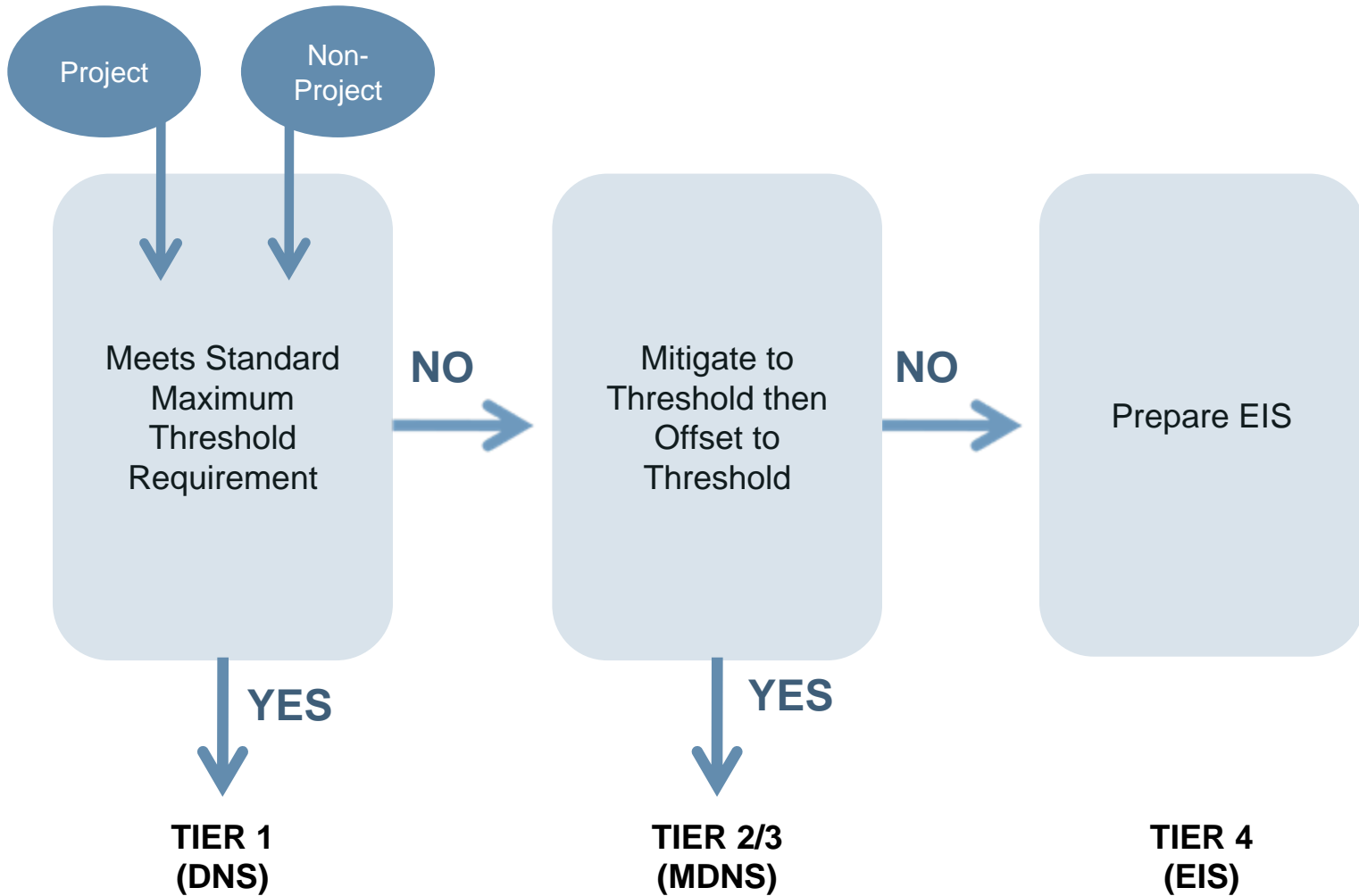
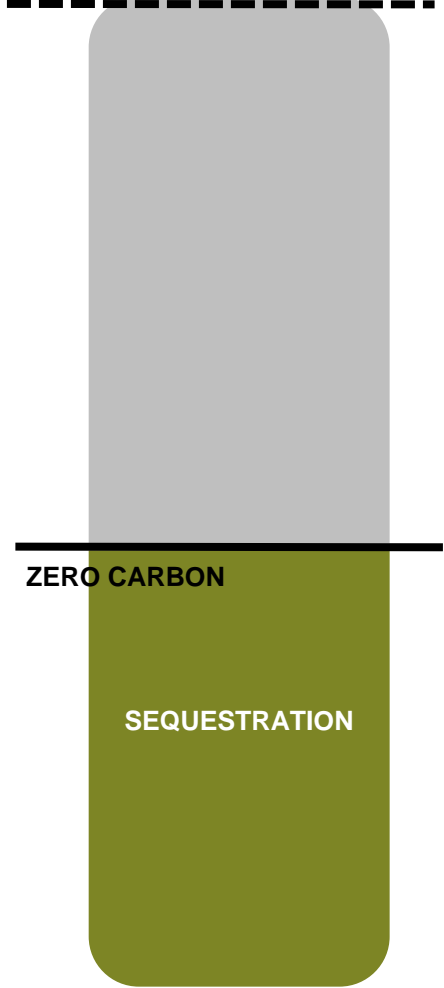


Threshold Determination





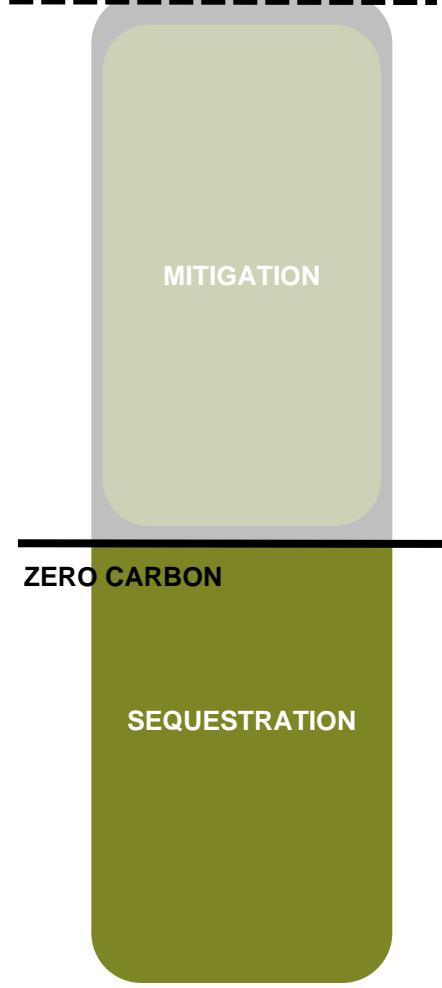
BUSINESS AS USUAL



ZERO CARBON

SEQUESTRATION

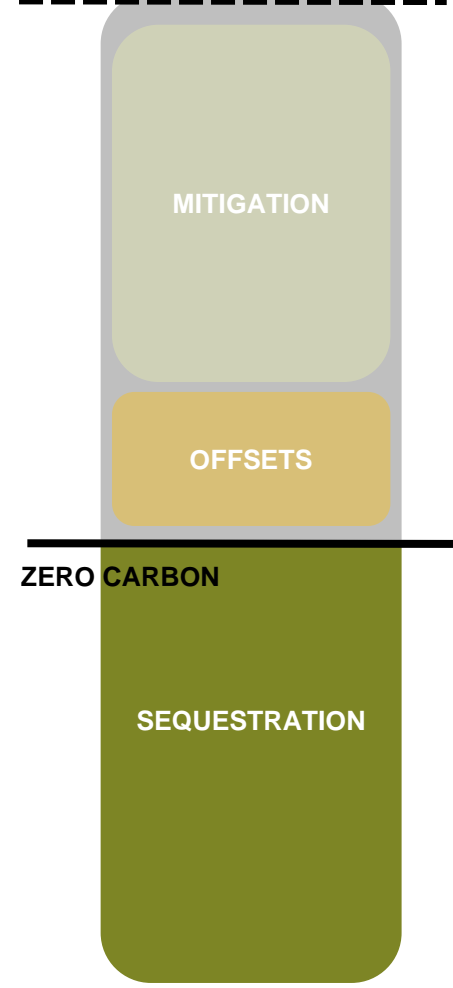
BUSINESS AS USUAL



ZERO CARBON

SEQUESTRATION

BUSINESS AS USUAL

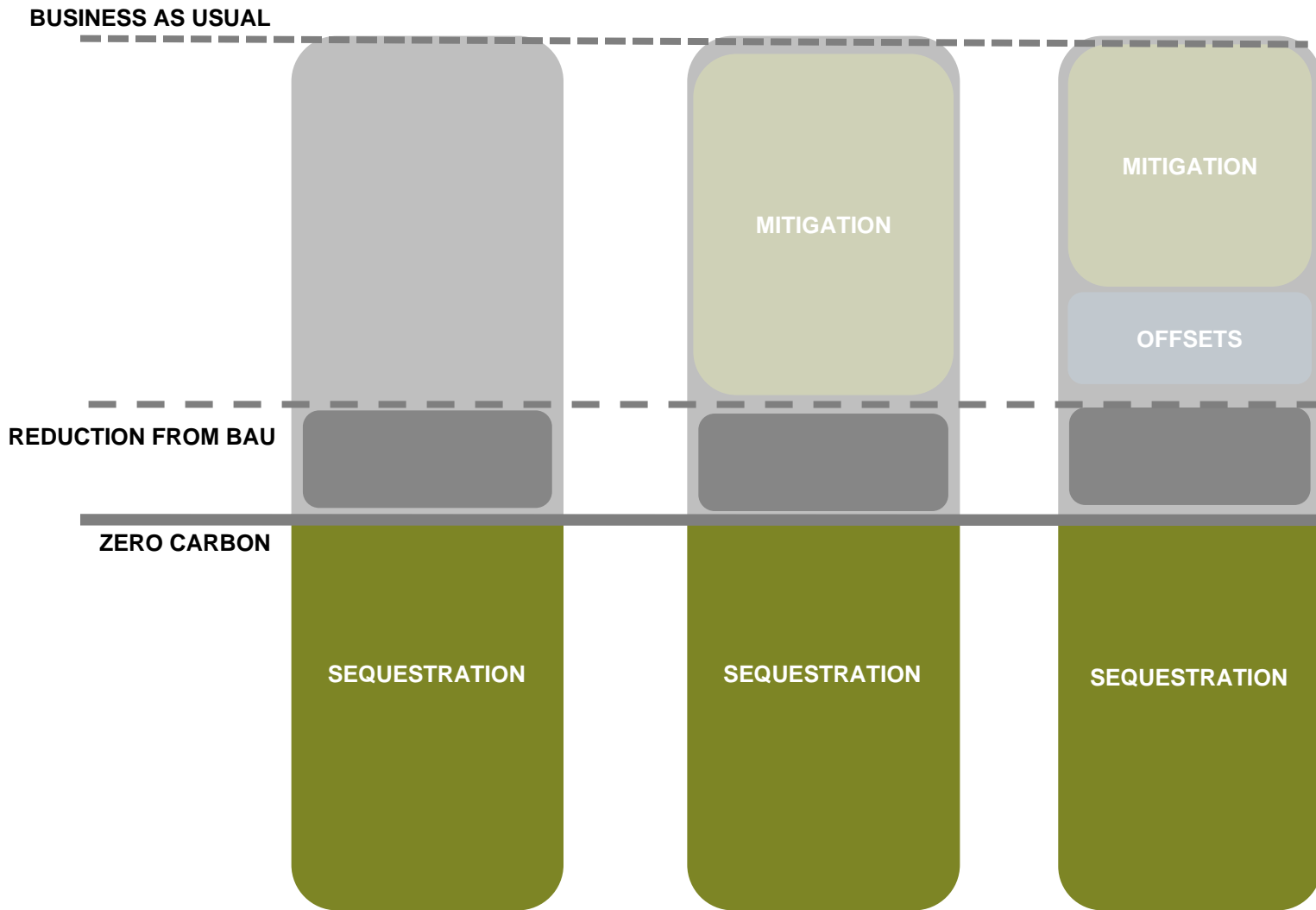


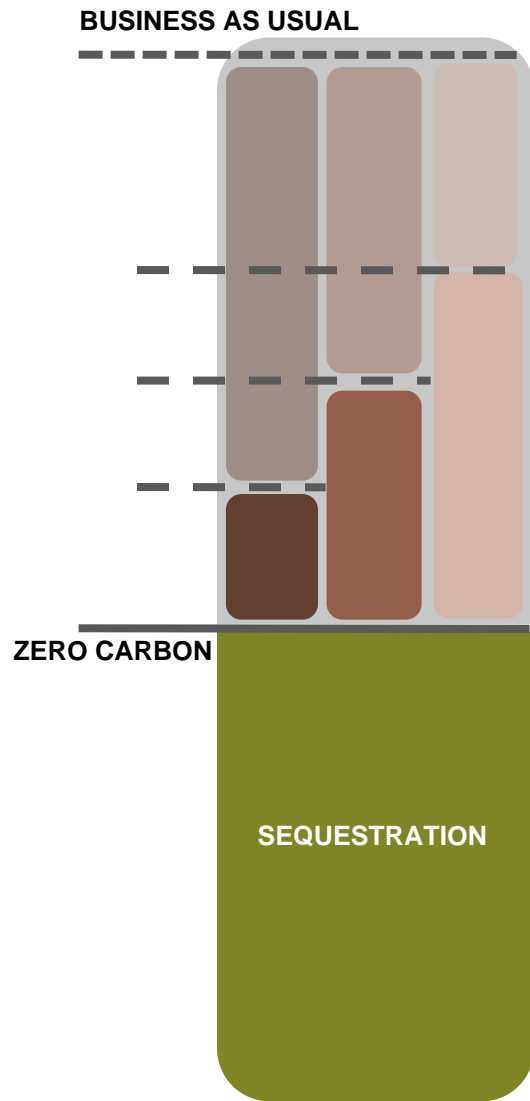
ZERO CARBON

SEQUESTRATION

Significance Threshold Approaches

1) Zero Significance Threshold

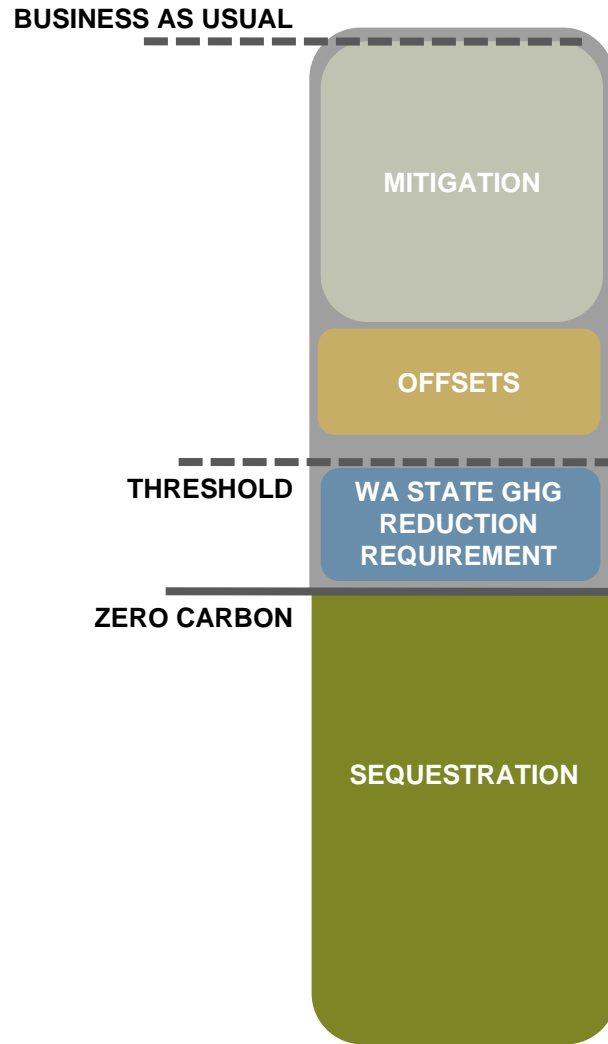




- — Thresholds
- Tons/ Person
- Tons/ Year
- Tons/ Unit

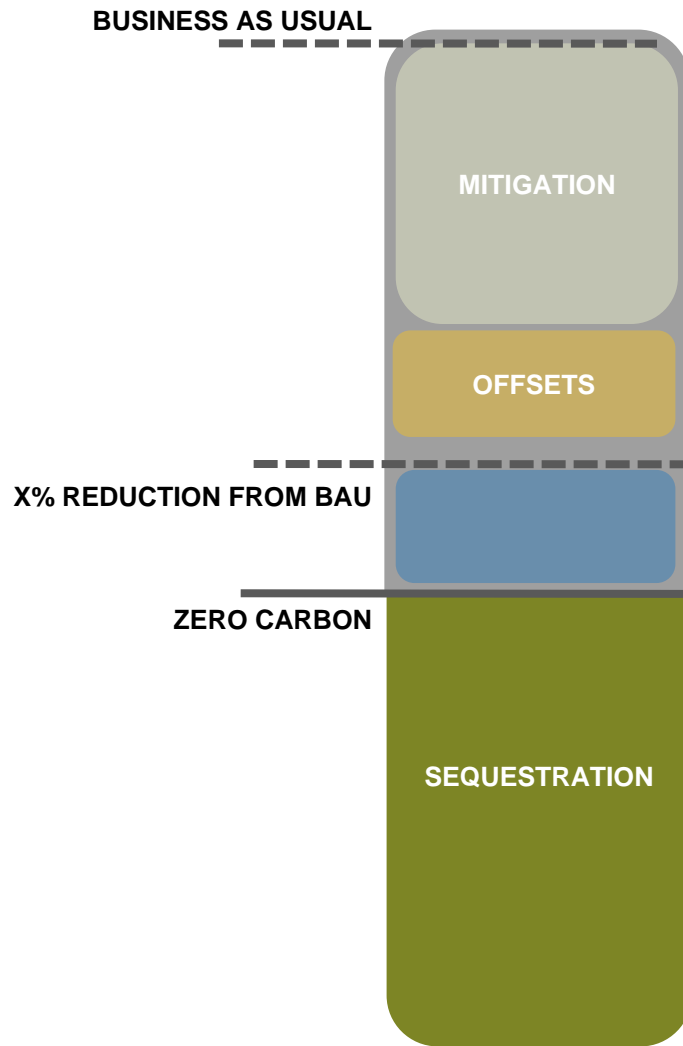
Significance Threshold Approaches

2) Non Zero Significance Threshold – Option 1: set x tons/ unit, x tons/ year or x tons/ person threshold



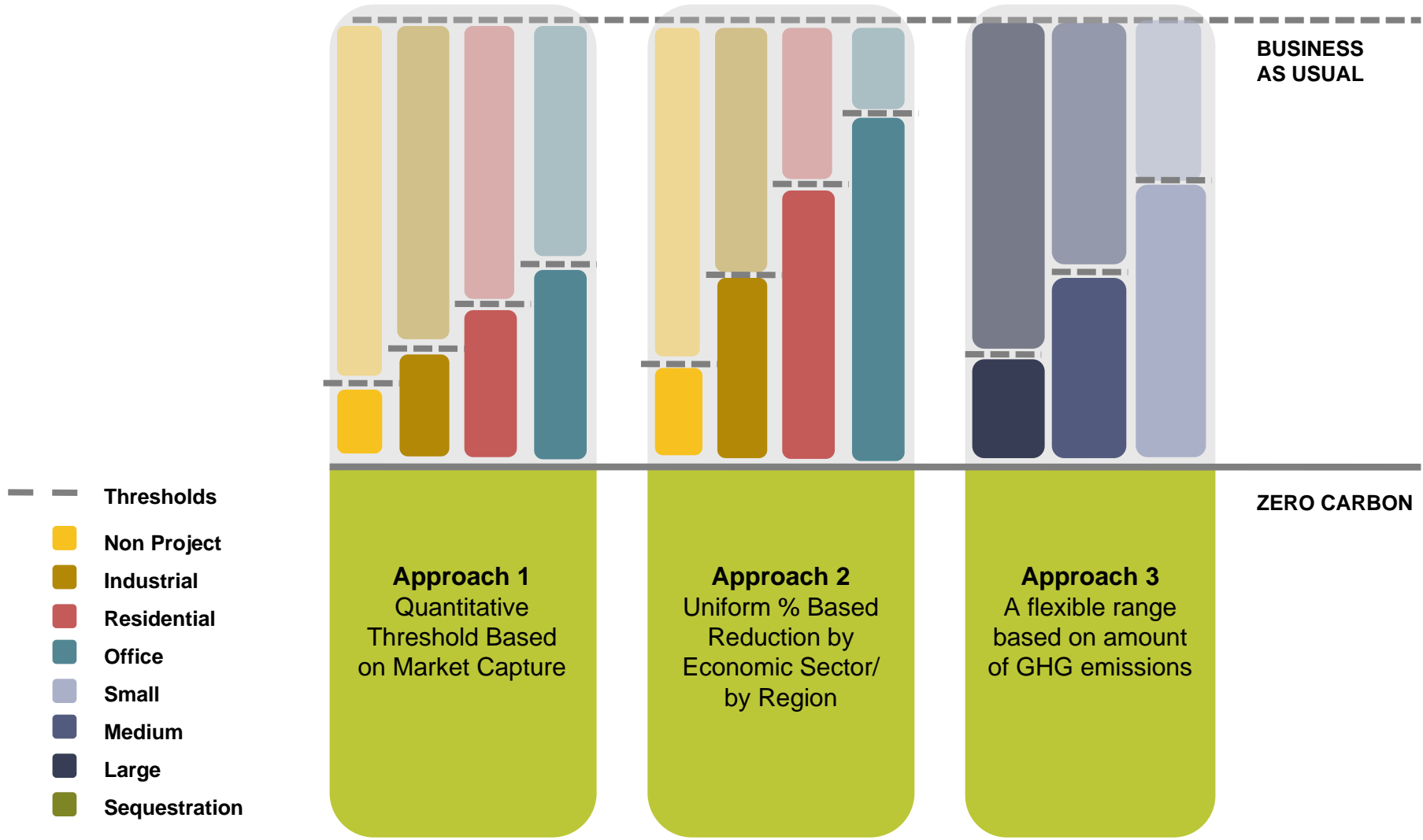
Significance Threshold Approaches

2) Non Zero Significance Threshold – Option 2: Meeting WA State GHG Reduction Requirements



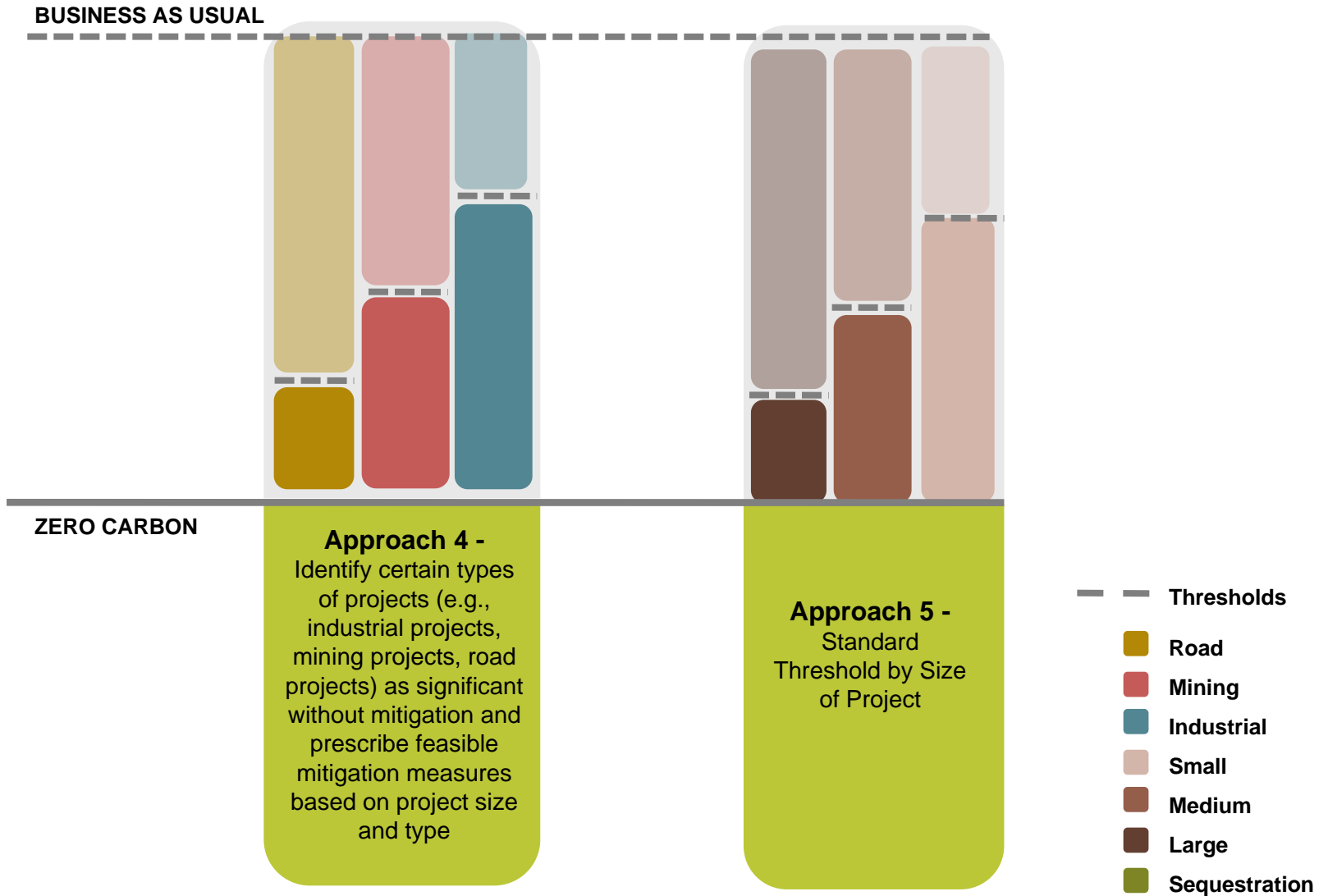
Significance Threshold Approaches

2) Non Zero Significance Threshold – Option 3: Uniform Percentage Based Reduction



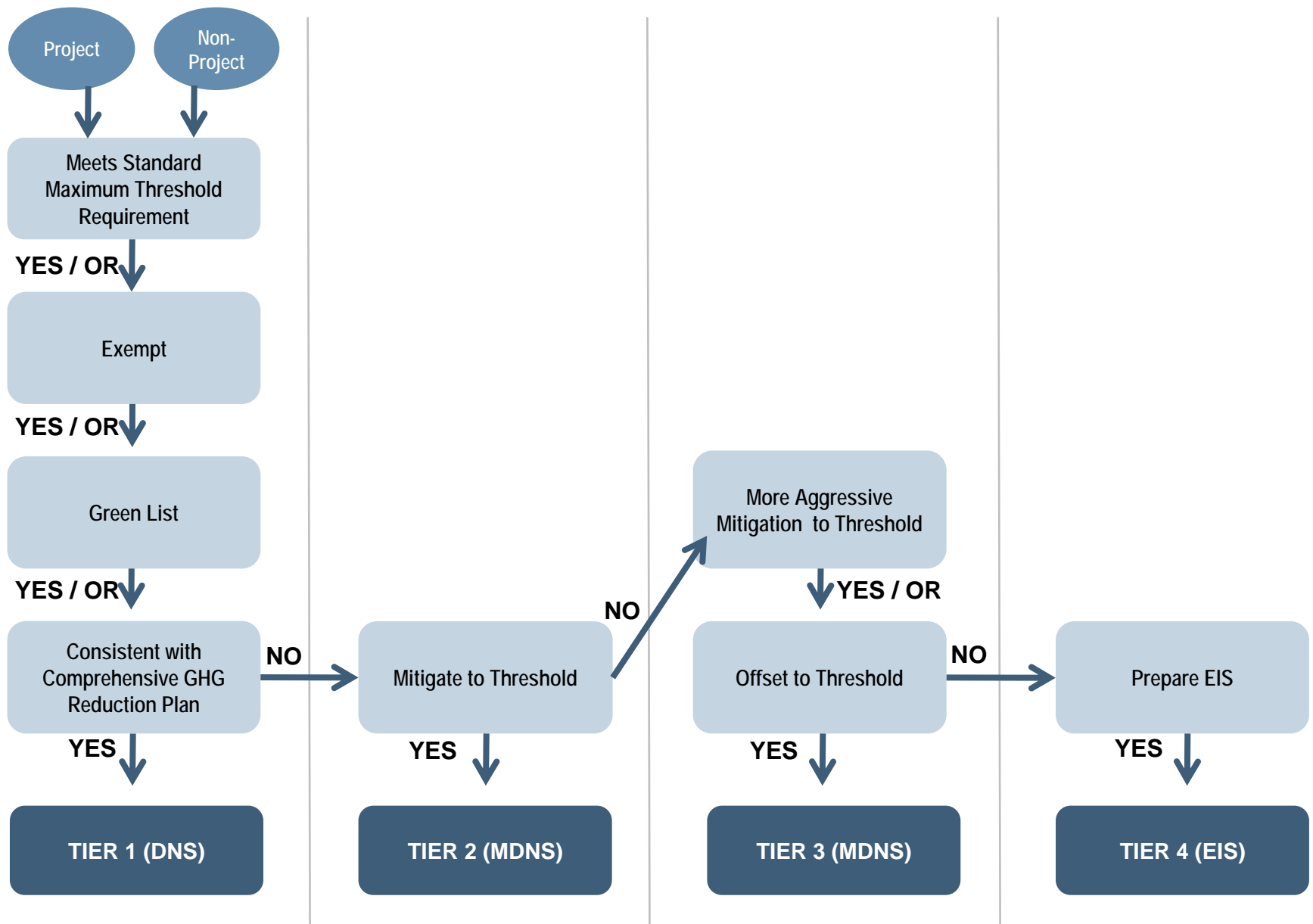
Significance Threshold Approaches

2) Non Zero Significance Threshold – Option 4: Standard Threshold by Type of Project



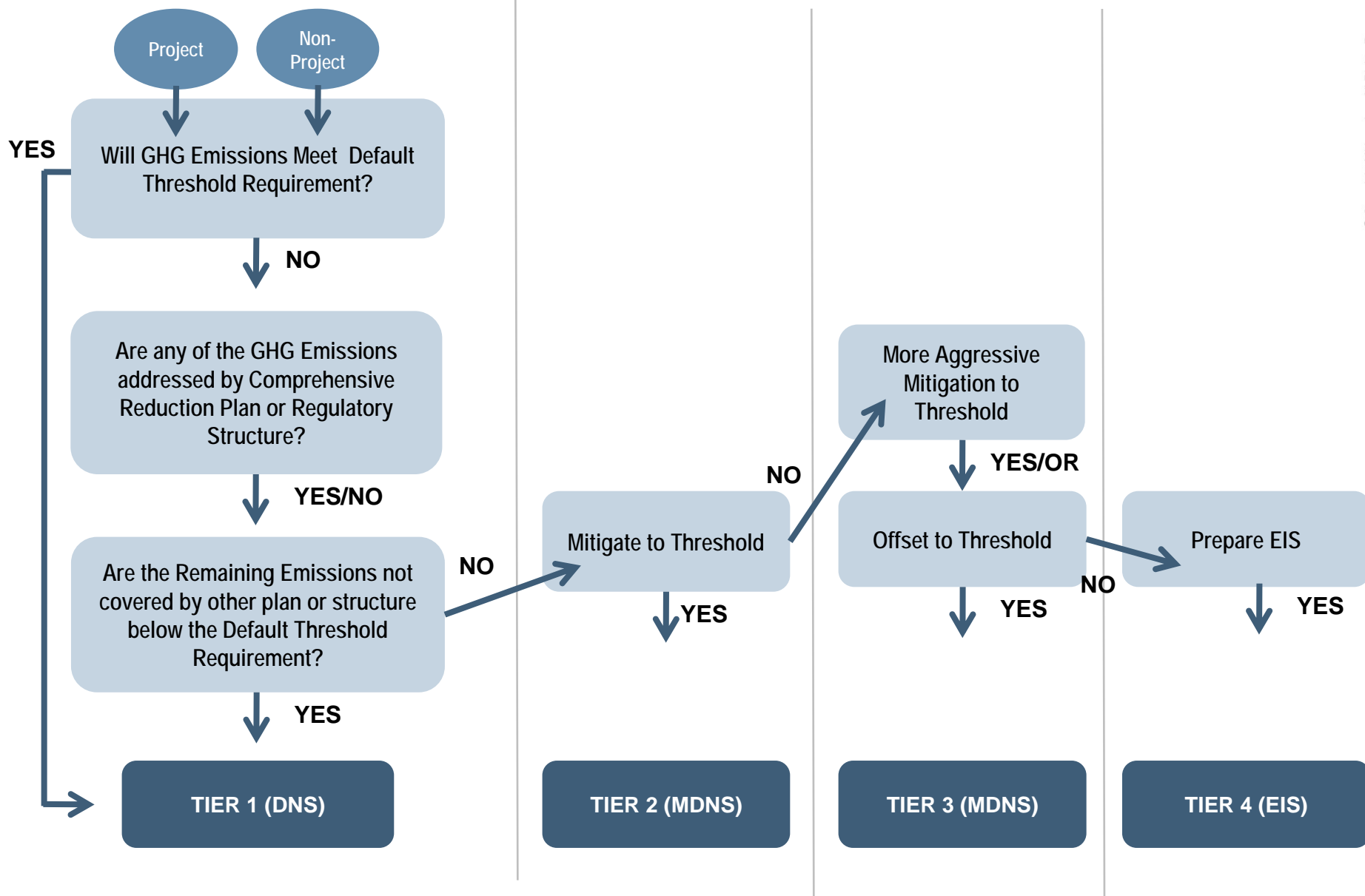
Significance Threshold Approaches

2) Non Zero Significance Threshold – Option 4: Standard Threshold by Type of Project



Significance Threshold Approaches

2) Non Zero Significance Threshold – Option 5: Decision Tree/ Tiered Approach



Significance Threshold Approaches

2) Non Zero Significance Threshold – Option 6: Safe Harbor/ Tiered Approach