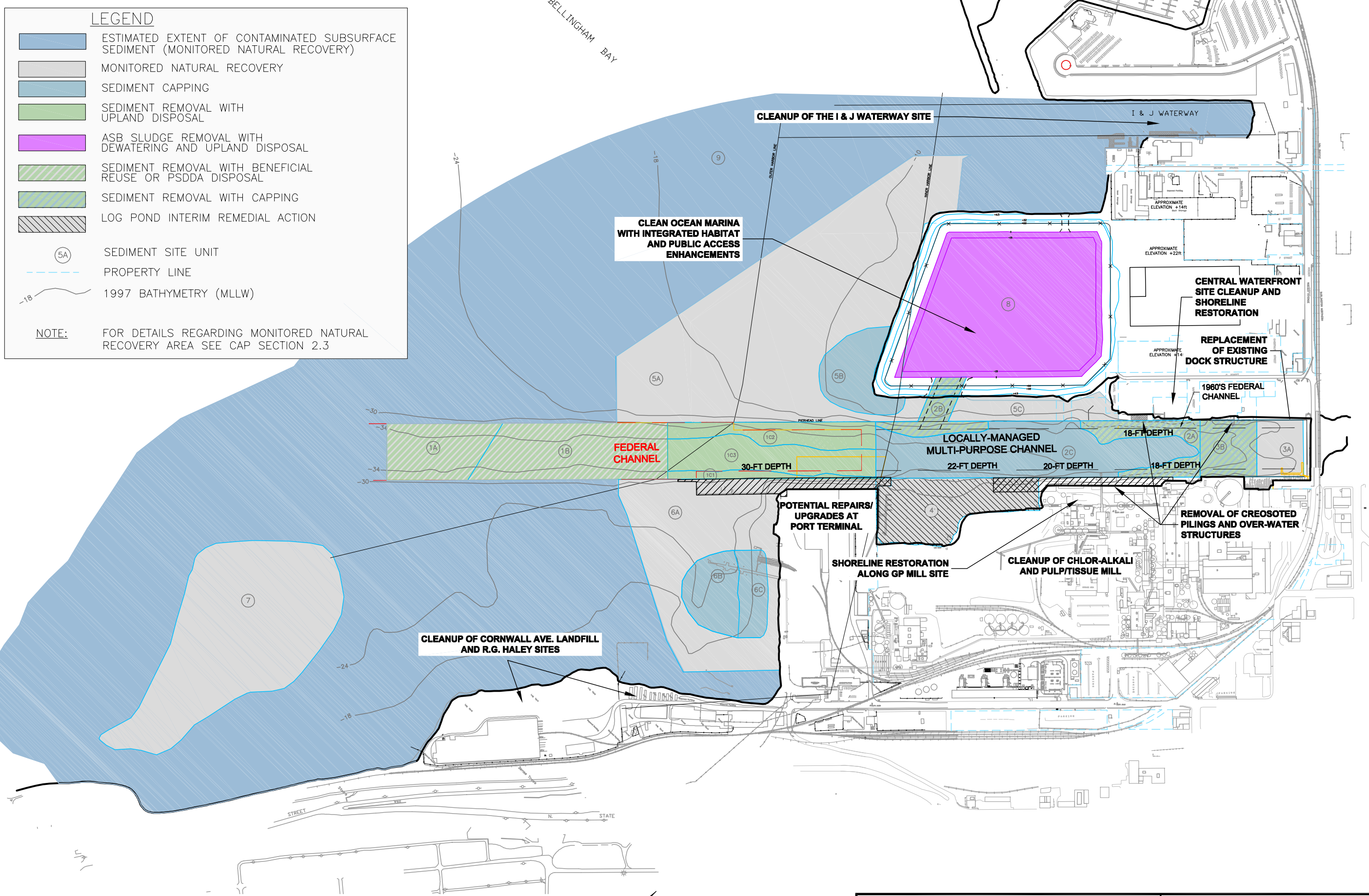


File: H:\18876\DCAP\18876DCAP015.dwg Layout: FIGURE 7-1 User: emarshall Plotted: Jul 06, 2007 - 11:16am Xref's:



LEGEND

- ESTIMATED EXTENT OF CONTAMINATED SUBSURFACE SEDIMENT (MONITORED NATURAL RECOVERY)
- MONITORED NATURAL RECOVERY
- SEDIMENT CAPPING
- SEDIMENT REMOVAL WITH UPLAND DISPOSAL
- ASB SLUDGE REMOVAL WITH DEWATERING AND UPLAND DISPOSAL
- SEDIMENT REMOVAL WITH BENEFICIAL REUSE OR PSDDA DISPOSAL
- SEDIMENT REMOVAL WITH CAPPING
- LOG POND INTERIM REMEDIAL ACTION
- 5A SEDIMENT SITE UNIT
- PROPERTY LINE
- 1997 BATHYMETRY (MLLW)

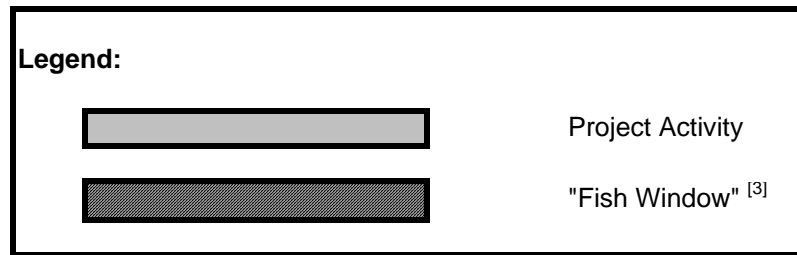
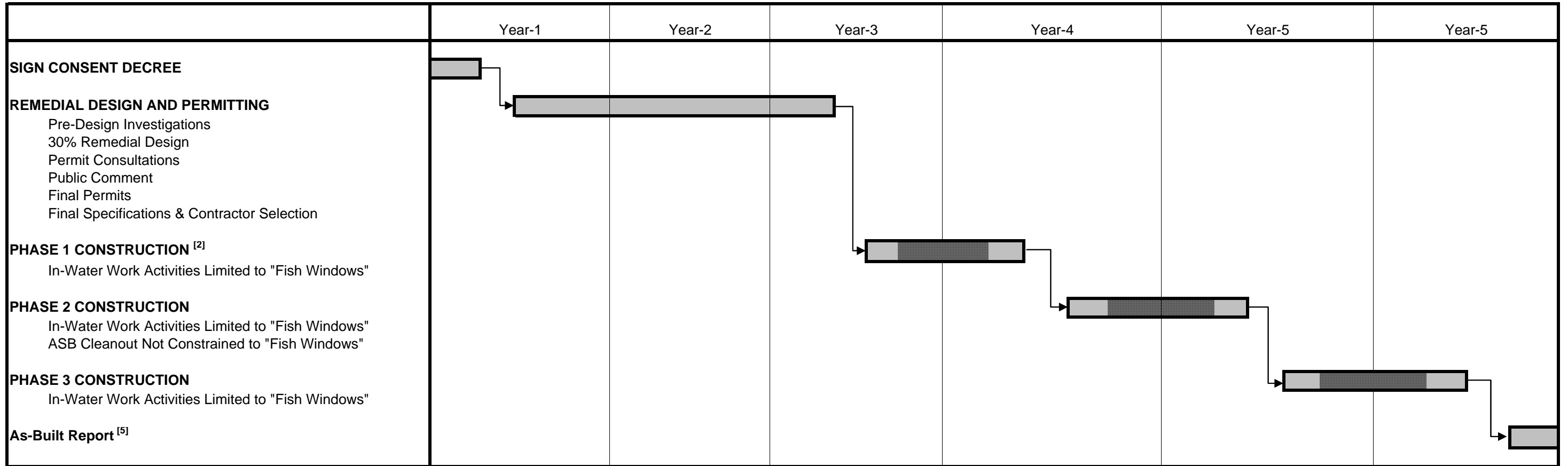
NOTE: FOR DETAILS REGARDING MONITORED NATURAL RECOVERY AREA SEE CAP SECTION 2.3

ENSR | AECOM



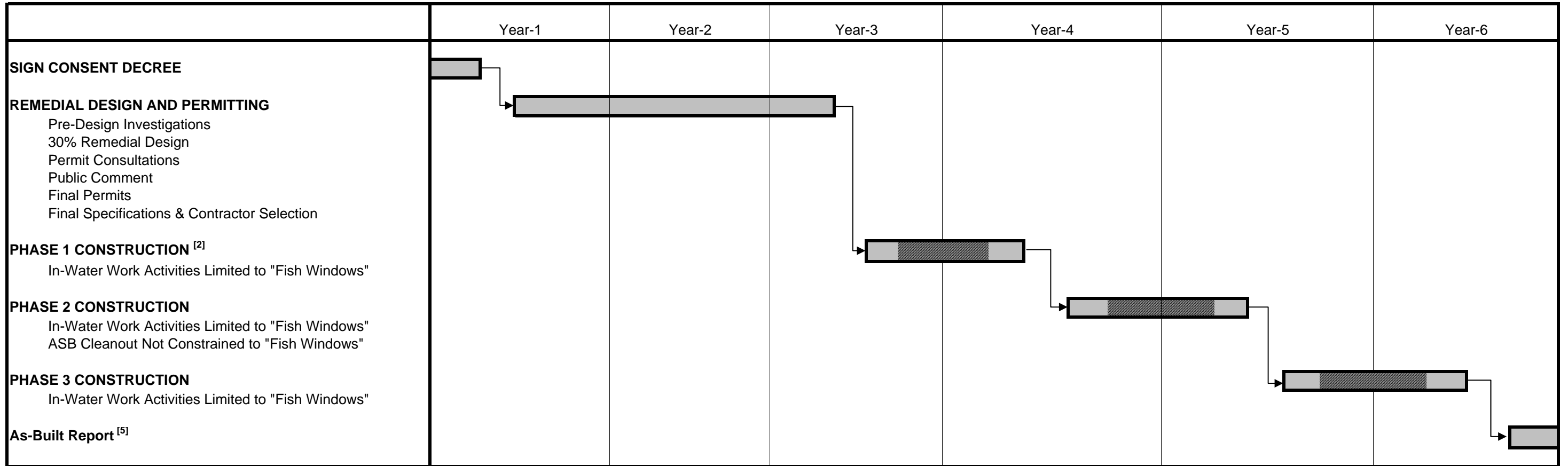
WHATCOM WATERWAY CLEANUP ACTION PLAN PORTB-18876		SUMMARY OF RELATED PROJECTS
DATE: 7/6/07	DRWN: E.M./SEA	FIGURE 7-1

Figure 7-2 Anticipated Implementation Schedule ^[1]





- Notes:**
- 1 This figure illustrates anticipated schedule for design, permitting and construction activities. Actual duration is subject to change based on time required for permitting, and construction sequence specified in project permits.
 - 2 Three-phase construction sequence is described in Section 4 of the cleanup action plan. Final phasing is subject to change based on permit requirements and final design.
 - 3 Construction activities within Bellingham Bay surface waters are expected to be limited to appropriate seasonal "fish windows" specified in project permits, to avoid impacts to juvenile salmonids.
 - 4 Long-term monitoring activities are not shown. As described in Section 6, these are expected to include monitoring events 1, 3, 5, 10, 20 and 30 years after completion of construction.
 - 5 Restrictive Covenants to be filed prior to Ecology approval of the completion report.

Figure 7-2 Anticipated Implementation Schedule ^[1]



Legend:

 Project Activity

 "Fish Window" ^[3]

- Notes:**
- 1 This figure illustrates anticipated schedule for design, permitting and construction activities. Actual duration is subject to change based on time required for permitting, and construction sequence specified in project permits.
 - 2 Three-phase construction sequence is described in Section 4 of the cleanup action plan. Final phasing is subject to change based on permit requirements and final design.
 - 3 Construction activities within Bellingham Bay surface waters are expected to be limited to appropriate seasonal "fish windows" specified in project permits, to avoid impacts to juvenile salmonids.
 - 4 Long-term monitoring activities are not shown. As described in Section 6, these are expected to include monitoring events 1, 3, 5, 10, 20 and 30 years after completion of construction.
 - 5 Restrictive Covenants to be filed prior to Ecology approval of the completion report.