

TAG DESCRIPTION/NAME  
FZ BOF-00011

DEP-VSL-00005A/B  
PROCESS CONDENSATE  
LAG STORAGE VESSELS  
89200 GAL.

DEP-PMP-00015A/B/C  
PROCESS CONDENSATE  
LAG STORAGE VESSEL  
RECIRCULATION PUMPS  
HOLD 1

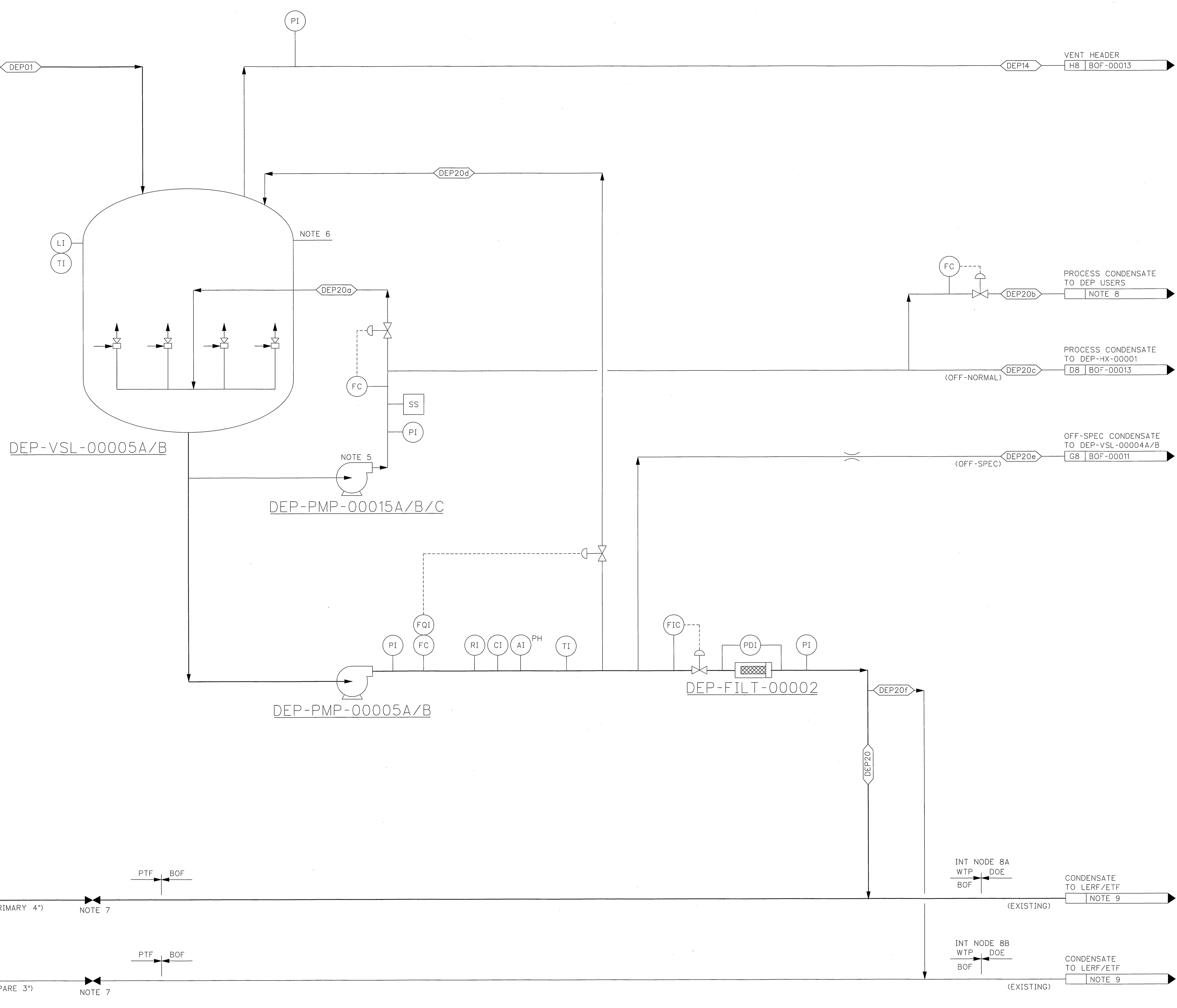
DEP-PMP-00005A/B  
PROCESS CONDENSATE  
LAG STORAGE VESSEL  
TRANSFER PUMPS  
170 GPM  
NOTE 11

DEP-FILT-00002  
PROCESS CONDENSATE  
FILTER  
170 GPM 5 MICRON  
NOTE 11

- NOTES:**
- SEE DRAWING 24590-WTP-M5-V17T-00001 FOR GENERAL NOTES AND SYMBOLS AND LEGEND.
  - CONTENTS OF THIS DOCUMENT ARE DANGEROUS WASTE PERMIT AFFECTING.
  - ONLY MAJOR INDICATION AND CONTROL INSTRUMENTATION SHOWN.
  - STREAM TABLES FOR SYSTEMS DEP AND DVP PROVIDED ON 24590-BOF-M5-V17T-00001 AND -00001002.
  - DEP-PMP-00015A/B/C RATED FOR 2X50% OPERATIONS.
  - OVERFLOW TO LOW POINT DRAIN VESSEL, DEP-VSL-00001.
  - FEED FROM PTF RLD-TK-00006A/B WILL HAVE POSITIVE ISOLATION.
  - PROCESS CONDENSATE USERS INCLUDE: DEP-FILT-00003/VARIOUS PIPELINE AND PUMP FLUSHES.
  - PIPELINES TO/FROM CURRENTLY DO NOT HAVE PROCESS FLOW DIAGRAMS.
  - PTF DRAWINGS WILL BE UPDATED ACCORDINGLY WHEN PTF DESIGN RECOMMENCES.
  - DEP-PMP-00005A/B AND DEP-FILT-00002 FLOW RATES BASED ON MAXIMUM ALLOWABLE FLOW RATE OF 170 GPM TO LERF/ETF PER ICD-06. FINAL DEP-PMP-00005A/B AND DEP-FILT-00002 SIZING MAY DIFFER DUE TO PRESSURE LIMITATIONS OF DOWNSTREAM PIPING.

- HOLD/OPEN ITEMS:**
- PUMP SIZING FOR RECIRCULATION RATE TO BE DETERMINED BY VENDOR.

- REFERENCES:**
- 24590-BOF-3ZD-25-00001, WTP DIRECT FEED LOW ACTIVITY WASTE (DFLAW) FACILITY AND SYSTEM DESIGN DESCRIPTIONS.
  - 24590-WTP-RPT-PR-01-008, PROCESS STREAM NUMBERS.
  - 24590-WTP-RPT-ENG-02-009, SYSTEM AND AREA LOCATORS LIST AND SYSTEM DIVISION OF RESPONSIBILITY.
  - 24590-WTP-RPT-ENG-02-010, COMPONENT IDENTIFIERS LIST.
  - 24590-WTP-ICD-MG-01-006, ICD 06-INTERFACE CONTROL DOCUMENT FOR RADIOACTIVE, DANGEROUS LIQUID EFFLUENTS.
  - 24590-BOF-MVC-DEP-00009, BATCH SIZING CALCULATION FOR DEP (DIRECT FEED LAW EFFLUENT MANAGEMENT FACILITY PROCESS SYSTEM) VESSELS: DEP-VSL-00001, -00002, -00003A/B/C, -00004A/B, -00005A/B.
  - 24590-BOF-MVC-DEP-00008, PROCESS DATA FOR THE PROCESS CONDENSATE LAG STORAGE VESSELS (DEP-VSL-00005A/B), TRANSFER PUMPS (DEP-PMP-00005A/B), AND RECIRCULATION PUMPS (DEP-PMP-00015A/B/C).



Please note that source, special nuclear, and byproduct materials, as defined in the Atomic Energy Act of 1954 (AEA) are regulated at the U. S. Department of Energy (DOE) facilities exclusively by DOE acting pursuant to its AEA authority. DOE asserts that pursuant to AEA, it has sole and exclusive responsibility and authority to regulate source, special nuclear, and byproduct materials at DOE-owned nuclear facilities. Information contained herein on radionuclides is provided for process description purposes only.

REV	DESCRIPTION	ORG	CHKD	RVWD	APVD	DATE
0	ISSUED FOR DESIGN	DJC	SN	N/A	[Signature]	3/24/16

<b>ISSUED BY</b> RFP-WTP PDC		PROJECT No:	24590
ISSUE STAMP		SITE:	HANFORD
		AREA:	200E
		BUILDING No:	25
		BY:	[Signature]
		DATE:	3/24/16
		CHECKER:	[Signature]
		DATE:	3/24/16
		APPROVER:	[Signature]
		DATE:	3/24/16
		REVIEWER:	N/A
		DATE:	

**REVISION HISTORY**

CONTRACT No: DE-4C27-01RV14136

RIVER PROTECTION PROJECT  
WASTE TREATMENT PLANT  
2435 STEVENS CENTER PLACE  
RICHLAND, WA 99354

**PROCESS FLOW DIAGRAM  
DIRECT FEED PROCESS  
CONDENSATE TRANSFER  
(SYSTEM DEP)**

SCALE: NONE

24590-BOF-M5-V17T-00014

REV 0