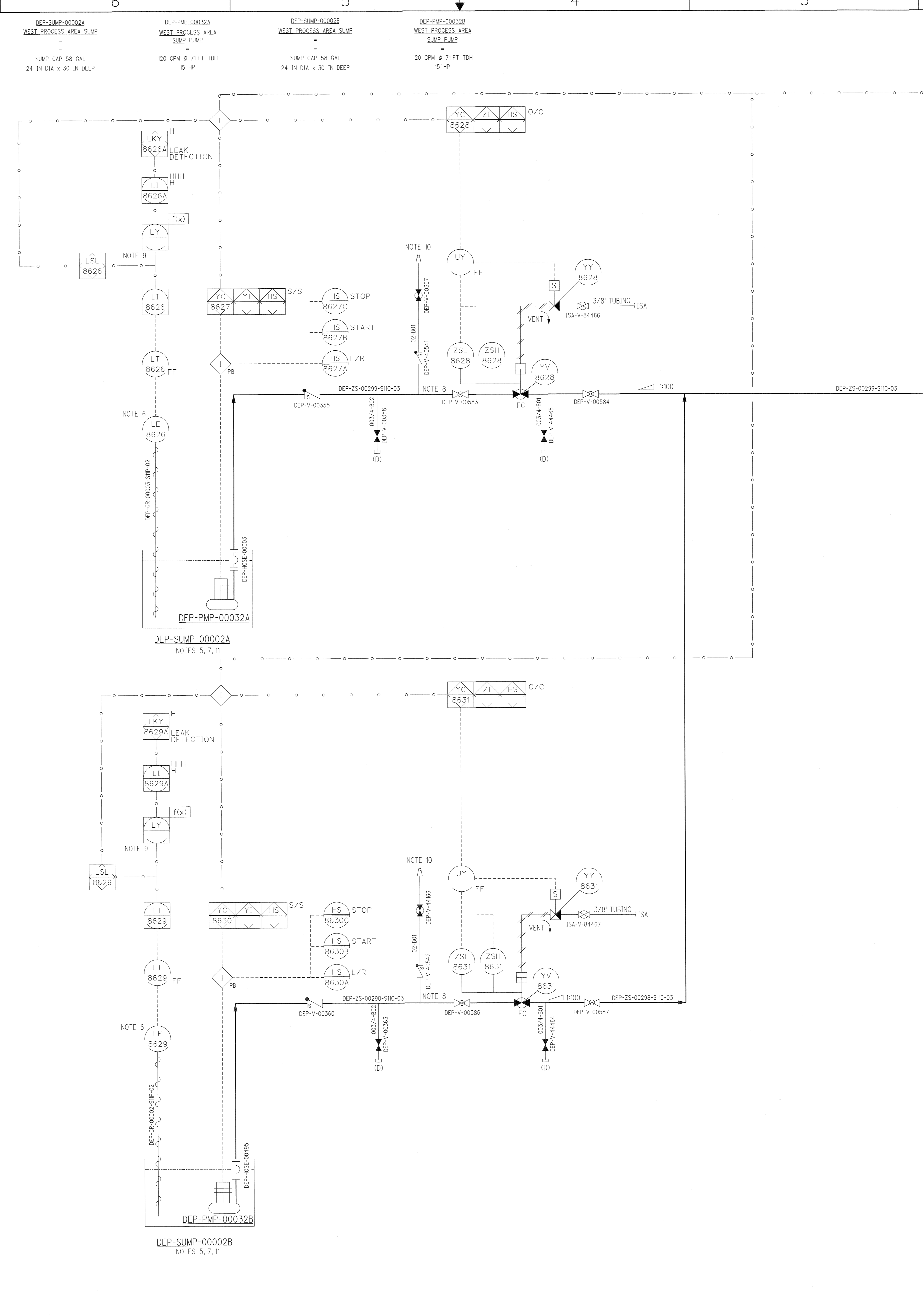


H  
G  
F  
E  
D  
C  
B  
A



- NOTES:**
- SEE DRAWINGS 24590-WTP-M6-50-00001 THROUGH 24590-WTP-M6-50-00008 FOR GENERAL NOTES, SYMBOLS AND LEGEND, AND GENERAL SLOPE REQUIREMENTS.
  - CONTENTS OF THIS DOCUMENT ARE DANGEROUS WASTE PERMIT AFFECTING.
  - THE PRESSURE BOUNDARY FOR ALL COMPONENTS ON THIS DRAWING IS QUALITY LEVEL CM AND SEISMIC CATEGORY SC-IV, UNLESS OTHERWISE NOTED.
  - ALL LINES SHOWN ON THIS DRAWING SHALL BE FREE DRAINING, UNLESS OTHERWISE NOTED.
  - FOR THE PURPOSES OF ALARA, THE SUMP PUMPS IN ROOM E-0103 (C5) SHALL BE STARTED WITHIN 30 MINUTES OF LEAK DETECTION TO PREVENT EFFLUENT FROM SPILLING INTO ROOM E-0102 (C3).
  - STANDPIPE TO BE INSTALLED FROM 1/2" OFF OF THE BOTTOM OF THE SUMP TO 3.6 FEET ABOVE THE SUMP.
  - LOCATE IN WEST SIDE OF PROCESS AREA (E-0103).
  - LOCATE FLUSH CONNECTION AT THE TOP OF THE PROCESS PIPE, AS CLOSE AS POSSIBLE TO THE CHECK VALVE.
  - FUNCTION CONVERTS SUMP LEVEL IN INCHES TO GALLONS.
  - FOR CONNECTION TO LOCAL DIW UTILITY STATION FOR FLUSHING.
  - SUMP SHALL BE FLAT BOTTOM SUMP.

**HOLD/OPEN ITEMS:**

NONE

- REFERENCES:**
- 24590-BOF-3ZD-25-00001, WTP DIRECT FEED LOW ACTIVITY WASTE (DFLAW) FACILITY AND SYSTEM DESIGN DESCRIPTIONS.

PLEASE NOTE THAT SOURCE, SPECIAL NUCLEAR AND BYPRODUCT MATERIALS, AS DEFINED IN THE ATOMIC ENERGY ACT OF 1954 (AEA) ARE REGULATED AT THE U.S. DEPARTMENT OF ENERGY (DOE) FACILITIES EXCLUSIVELY BY DOE ACTING PURSUANT TO ITS AREA AUTHORITY. DOE ASSERTS THAT PURSUANT TO THE AEA IT HAS SOLE AND EXCLUSIVE RESPONSIBILITY AND AUTHORITY TO REGULATE SOURCE, SPECIAL NUCLEAR AND BYPRODUCT MATERIALS AT DOE-OWNED NUCLEAR FACILITIES. INFORMATION CONTAINED HEREIN ON RADIONUCLIDES IS PROVIDED FOR PROCESS DESCRIPTION PURPOSES ONLY.

DRAWING INDEX	
DWG NO	TITLE
24590-BOF-M6-DEP-0009001	DEP SYSTEM PROCESS AREA SUMPS DEP-SUMP-00002A/B
24590-BOF-M6-DEP-0009002	DEP SYS PROCESS VESSEL AREA SUMPS DEP-SUMP-00004A/B
24590-BOF-M6-DEP-0009003	DEP SYSTEM MISC SUMPS DEP-SUMP-00008
24590-BOF-M6-DEP-0009004	DEP SYSTEM PROCESS AREA SUMPS DEP-SUMP-00003A/B
24590-BOF-M6-DEP-0009005	DEP SYS PROCESS VESSEL AREA SUMPS DEP-SUMP-00005A/B

**CM**  
QUALITY DESIGNATOR

REV	ISSUED FOR CONSTRUCTION	DESCRIPTION	ORG	CHKD	RVWD	APVD	DATE
0	ISSUED FOR CONSTRUCTION						3/24/16

**REVISION HISTORY**

ISSUED BY	PROJECT No.	DATE
RP/W/P/PC	24590	3/23/16
ISSUE STAMP	SITE	3/23/16
	AREA	3/23/16
	BUILDING No.	3/23/16
ORIGINATOR	BY	3/23/16
CHECKER	DATE	3/23/16
APPROVER	DATE	3/23/16
REVIEWER	DATE	3/23/16
APPROVER	DATE	3/23/16

**BECHTEL**  
RIVER PROTECTION PROJECT  
WASTE TREATMENT PLANT  
2435 STEVENS CENTER PLACE  
RICHLAND, WA 99354

CONTRACT No: DE-AC27-01RV14136

**P&ID - BOF / EMF  
DIRECT FEED LAW EMF  
PROCESS SYSTEM  
PROCESS AREA SUMPS  
DEP-SUMP-00002A/B**

CONTENT APPLICABLE TO ALARA? <input type="checkbox"/> YES <input checked="" type="checkbox"/> NO	SCALE: NONE	REV: 0
ADR NO. 24590-WTP-ADR-M-16-0001	SCALE: NONE	REV: 0