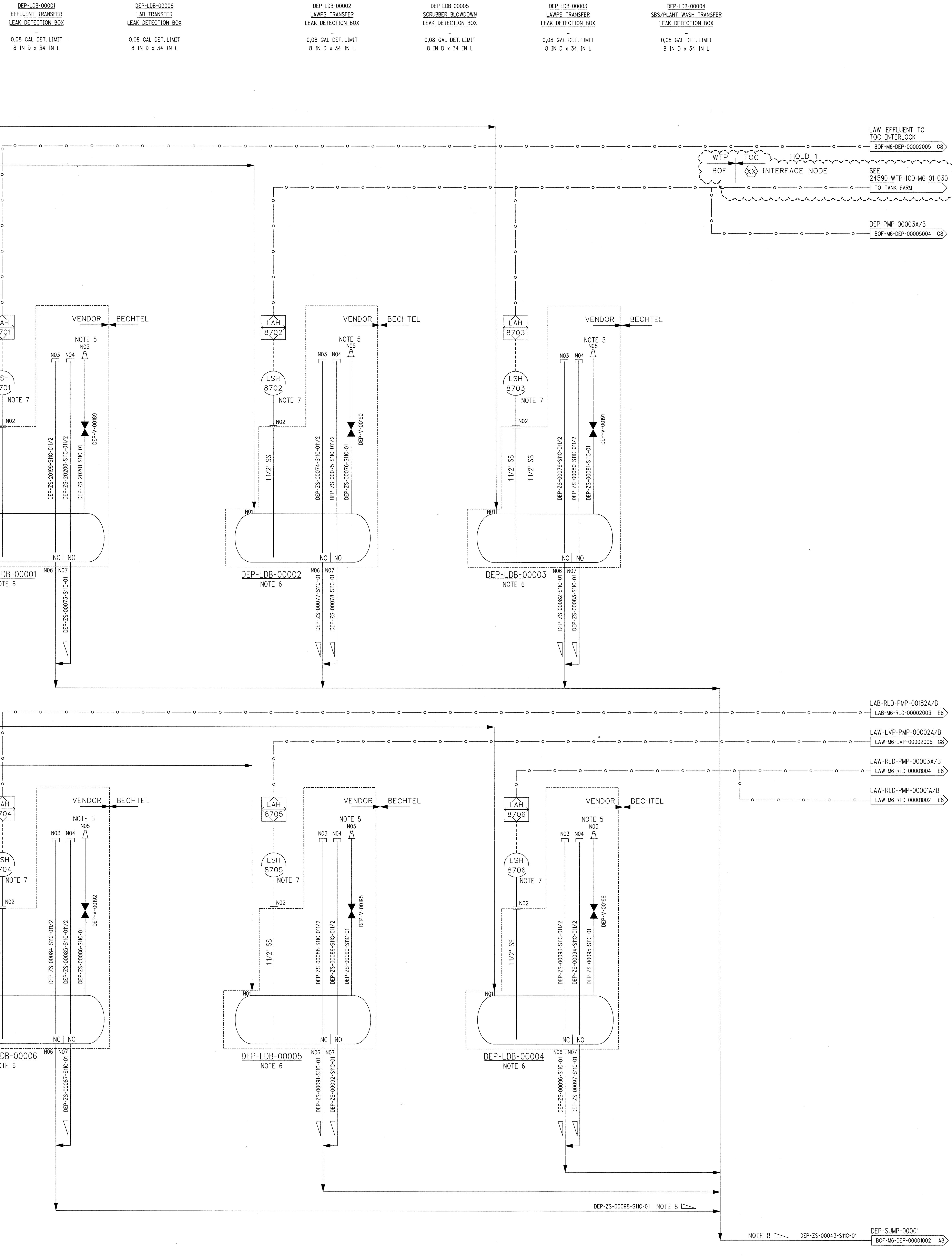


H
G
F
E
D
C
B
A



NOTES:

- SEE DRAWINGS 24590-WTP-M6-50-00001 THROUGH 24590-WTP-M6-50-00008 FOR GENERAL NOTES, SYMBOLS AND LEGEND, AND GENERAL SLOPE REQUIREMENTS.
- CONTENTS OF THIS DOCUMENT ARE DANGEROUS WASTE PERMIT AFFECTING.
- THE PRESSURE BOUNDARY FOR ALL COMPONENTS SHOWN ON THIS DRAWING IS QUALITY LEVEL CM AND SEISMIC CATEGORY SC-IV, UNLESS OTHERWISE NOTED.
- ALL LINES SHOWN ON THIS DRAWING SHALL BE SELF DRAINING, UNLESS OTHERWISE NOTED.
- QUICK CONNECTION IS PROVIDED FOR PNEUMATIC TESTING OF THE LEAK DETECTION BOX AND THE PIPE JACKET.
- OVERFLOW AND DRAIN PLUGS OPERATED REMOTELY VIA RODS THAT EXTEND UP TO ELEVATION (-22'-6") THROUGH PIPE SLEEVES. DRAIN PLUG INSTALLED IN THE CLOSED POSITION TO CREATE A DETECTABLE LEVEL. UPON LEVEL DETECTION, THE PLUG IS LIFTED TO DRAIN THE LEAK DETECTION BOX. THE OVERFLOW PLUG IS NORMALLY OPEN FOR OVERFLOW PROTECTION. BOTH PLUGS WILL BE CLOSED FOR PNEUMATIC TESTING.
- LEVEL SENSOR TO BE MOUNTED DIRECTLY TO THE VENDOR FLANGE.
- SLOPE COLLECTION HEADER AT 1:100 AS PRACTICAL WITH A MINIMUM SLOPE OF 1:200.

HOLD/OPEN ITEMS:

- INTERFACE NODE LOCATION AND CONFIGURATION ON HOLD UNTIL SPECIFIED IN 24590-WTP-ICD-MG-01-030.

REFERENCES:

- 24590-BOF-3ZD-25-00001, WTP DIRECT FEED LOW ACTIVITY WASTE (DFLAW) FACILITY AND SYSTEM DESIGN DESCRIPTIONS.

PLEASE NOTE THAT SOURCE, SPECIAL NUCLEAR AND BYPRODUCT MATERIALS, AS DEFINED IN THE ATOMIC ENERGY ACT OF 1954 (AEA) ARE REGULATED AT THE U.S. DEPARTMENT OF ENERGY (DOE) FACILITIES EXCLUSIVELY BY DOE ACTING PURSUANT TO ITS AEA AUTHORITY. DOE ASSERTS THAT PURSUANT TO THE AEA IT HAS SOLE AND EXCLUSIVE RESPONSIBILITY AND AUTHORITY TO REGULATE SOURCE, SPECIAL NUCLEAR AND BYPRODUCT MATERIALS AT DOE-OWNED NUCLEAR FACILITIES. INFORMATION CONTAINED HEREIN ON RADIONUCLIDES IS PROVIDED FOR PROCESS DESCRIPTION PURPOSES ONLY.

DRAWING INDEX	
DWG NO	TITLE
24590-BOF-M6-DEP-00011001	DEP SYS EFFLUENT FAC LEAK DETECTION DEP-LDB-00001 THRU -00006

CM QUALITY DESIGNATOR	0	ISSUED FOR CONSTRUCTION	DL	AKG	26	2/2/16	ADelle
	REV	DESCRIPTION	ORG	CHKD	RVWD	APVD	DATE
PROJECT No. 24590		SITE HANFORD		RIVER PROTECTION PROJECT			
ISSUED BY RPP-WTP DDC		BUILDING No. 25		WASTE TREATMENT PLANT			
BY		DATE		2435 STEVENS CENTER PLACE			
CHECKER		DATE		RICHLAND, WA 99354			
APPROVER		DATE		CONTRACT No: DE-AC27-01RV14136			
REVIEWER		DATE		P&ID - BOF/EMF			
APPROVER		DATE		DIRECT FEED LAW EMF			
APPROVER		DATE		PROCESS SYSTEM			
CONTENT APPLICABLE TO ALARA? <input type="checkbox"/> YES <input checked="" type="checkbox"/> NO		ADR No. 24590-WTP-ADR-M-16-0001		REV: 1		EFFLUENT FACILITY LEAK DETECTION	
SCALE: NONE		REV: 0		DEP-LDB-00001 THRU DEP-LDB-00006			
E: SIZE - 44x34		COMPUTER GENERATED - MANUAL DESIGN CHANGES NOT PERMITTED		24590-BOF-M6-DEP-00011001			
8/2/2016 9:46:17 AM		4/7/2016		0			