



PUBLIC PARTICIPATION PLAN

B&L Woodwaste
2201 6th Avenue, Milton, WA 98354

Prepared by
Washington State Department of Ecology
Southwest Regional Office
Toxics Cleanup Program
300 Desmond Drive
Olympia, Washington 98504-7775

Updated May 2009

TABLE OF CONTENTS

| | |
|---|----------|
| INTRODUCTION | 3 |
| SITE BACKGROUND | 3 |
| Site Description and History..... | 3 |
| Current Activity | 4 |
| MODEL TOXICS CONTROL ACT | 5 |
| PUBLIC PARTICIPATION ACTIVITIES AND RESPONSIBILITIES | 7 |
| FIGURES | |
| Figure 1. Site location..... | 4 |
| Figure 2. Model Toxics Control Act Cleanup Stages | 9 |
| Figure 3. Final Cleanup Remedies | 10 |

INTRODUCTION

The Washington State Department of Ecology (Ecology) has developed this public participation plan in cooperation with Murray Pacific Corporation (Murray Pacific), Louisiana Pacific Corporation (Louisiana Pacific) and Wasser & Winters Corporation (Wasser & Winters), pursuant to the Model Toxics Control Act (MTCA) and Agreed Order No. DE 07/1-TC-S3938 to promote meaningful community involvement during the investigation and cleanup of B&L Woodwaste site. **This plan outlines and describes the tools that Ecology uses to inform the public about site activities and identifies opportunities for the community to become involved.**

SITE BACKGROUND

The B&L Woodwaste landfill was used from mid 1970's until the early 1980's. Woodwaste, mixed with soil and Asarco slag, originating from log sort yards in Commencement Bay were taken to this site for disposal. The Asarco slag leached arsenic into the soils and groundwater.

In **1982**, the Commencement Bay Nearshore/Tideflats area, including Hylebos Waterway and the B&L Woodwaste site, were added to the National Priorities List by the Environmental Protection Agency (EPA). The B&L Woodwaste site, which includes the landfill and surrounding ditches and wetlands, was named as a source of arsenic, copper and lead.

In **1992**, Ecology issued an Enforcement Order requiring Asarco, Inc. and other responsible parties (Murray Pacific, Louisiana-Pacific and Executive Bark) to do the following:

- Consolidate woodwaste on the 18 acre property into an 11 acre landfill.
- Construct a multi-layer capping system to prevent rain from flushing contamination from the waste.
- Install and operate a groundwater monitoring well system.
- Create a plan to address any failure of the remedy.

In response to a discovery of elevated arsenic in groundwater at the site, Ecology completed an extensive study of the wetland area and found:

- Dissolved arsenic levels in the groundwater in a nearby wetland were above cleanup standards.
- Some waste at the bottom of the landfill was in contact with the water table during the winter months.
- Plants and animals in the nearby wetland did not appear to be experiencing any toxic effects.

In **2002**, Asarco's funds became unavailable and they were unable to complete the rest of the Cleanup Action Plan. In **2005**, Ecology amended the original Enforcement Order and required the liable parties (PLPs) to complete:

- An evaluation of potential remedies to contain the release of contaminated groundwater from the site.
- An investigation of the wetland area to determine what remedial action is needed.

In **2005**, Asarco entered into bankruptcy proceedings and has not contributed towards cleanup efforts since that time. Murray Pacific has contributed to the evaluation of potential remedies and preparation of the Cleanup Action Plan.

In July **2007**, the draft Cleanup Action Plan (CAP) was finalized after a public comment period. Ecology entered into bankruptcy court proceedings with Asarco and settlement negotiations with Asarco, Murray Pacific, Wasser and Winters and Louisiana Pacific related to those proceedings.

In **2008**, Ecology and Murray Pacific Corp (Murray Pacific) entered into a Consent Decree requiring Murray Pacific to implement the Cleanup Action Plan which required:

- Completion of an archeological survey of the area to determine if cultural artifacts are present.
- Design and construction of the cleanup remedy detailed in the CAP.

CURRENT ACTIVITY

As part of the 2008 agreement, Murray Pacific developed an Engineering Design Report to describe in detail how the first phase of the final cleanup actions would be implemented and maintained. Generally, the cleanup consists of construction of a sub-surface wall around the landfill, pumping and treatment of wetland groundwater and other remedial measures.

MODEL TOXICS CONTROL ACT CLEANUP STAGES

The Model Toxics Control Act (MTCA) defines each stage of the cleanup process to protect human health and the environment. Figure 2 on page 9 details these stages.

Some steps described in the chart include “agreed orders” or “consent decrees.” These are agreements between Ecology and the parties responsible for cleanup of the pollution. In addition to the steps in the chart, “interim actions” may be taken during steps 1 through 5 (the investigation) to reduce or eliminate pollution that poses an immediate threat to human health or the environment.

The cleanup process is complex. Issues often arise that require more attention or evaluation, and may lead to changes in the steps or schedule. Every effort will be made to keep the public well-informed of changes.

PUBLIC PARTICIPATION ACTIVITIES AND RESPONSIBILITIES

The purpose of this Public Participation Plan is to promote public understanding and participation in the MTCA activities planned for this site. This section of the plan addresses how Ecology will share information and receive public comments and community input on the site activities.

Public Involvement Activities

Ecology uses a variety of activities to facilitate public participation in the investigation and cleanup of MTCA sites. Ecology will implement input provided by the community whenever possible.

The following is a list of the public involvement activities that Ecology will use, their purposes, and descriptions of when and how they will be used during this site cleanup.

Formal Public Comment Periods

Comment periods are the primary method Ecology uses to get feedback from the public on proposed cleanup decisions. Comment periods usually last 30 days and are required at key points during the investigation and cleanup process before final decisions are made.

During a comment period, the public can comment in writing. Verbal comments are taken if a public hearing is held. After formal comment periods, Ecology reviews all comments received and may respond in a document called a Responsiveness Summary.

Ecology will consider the need for changes or revisions based on input from the public. If significant changes are made, then a second comment period may be held. If no significant changes are made, then the draft document(s) will be finalized.

Additional public comment periods will be held for remedial investigation/feasibility study reports, for any draft cleanup action plans that are developed for the site, and for any future legal agreements regarding this site.

Public Meetings and Hearings

Public meetings may be held at key points during the investigation and cleanup process. Ecology also may offer public meetings for actions expected to be of particular interest to the community. These meetings will be held at locations convenient to the community.

Information Repositories

Information repositories are places where the public may read and review site information, including documents that are the subject of public comment.

Ecology has established four repositories for the B&L Woodwaste cleanup project. Documents available for public review and comment can be found here:

- Pierce County Library, 1000 Laurel Street, Milton WA 98354 Phone: (253) 922-2870
- Tacoma Main Library, 1102 Tacoma Avenue South, Tacoma, WA 98402
Phone: (253) 591-5666
- Citizens for a Healthy Bay, 917 Pacific Avenue Suite 100, Tacoma, WA 98402
Phone: (253) 383-2429
- WA State Department of Ecology, Southwest Regional Office, Toxics Cleanup Program
300 Desmond Dr., Lacey, WA 98503 Phone: (360) 407-6365
- Ecology's Web Site: http://www.ecy.wa.gov/programs/tcp/sites/B_L_Woodwaste/B_L_woodwaste_hp.htm

Site Register

Ecology's Toxics Cleanup Program uses its bimonthly *Site Register* to announce all of its public meetings and comment periods, as well as many other activities. To receive the *Site Register* in electronic or hard copy format, contact Linda Thompson at (360) 407-6069 or by e-mail at Ltho461@ecy.wa.gov. It is also available on Ecology's web site at http://www.ecy.wa.gov/programs/tcp/pub_inv/pub_inv2.html

Mailing List

Ecology has compiled a mailing list for the site. The list includes individuals, groups, public agencies, elected officials, private businesses, potentially affected parties, and other known interested parties. The list will be maintained at Ecology's Southwest Regional Office and will be updated as needed.

Please contact Meg Bommarito at (360) 407-6255 or mbom461@ecy.wa.gov if you would like to be involved or have your address added to or deleted from this mailing list.

Fact Sheets

Ecology will mail fact sheets to persons and organizations interested in the B&L Woodwaste cleanup project to inform them of public meetings and comment opportunities and important site activities. Ecology also may mail fact sheets about the progress of site activities.

Newspaper Display Ads

Ecology may place ads in the *Tacoma News Tribune* to announce public comment periods and public meetings or hearings for the site.

Plan Update

This public participation plan may be updated as the project proceeds. If an update is necessary, the revised plan will be submitted to the public for comment.

Points of Contact

If you have questions or need more information about this plan or the B&L Woodwaste cleanup project, please contact:

Dom Reale

Site Manager
Washington State Department of Ecology
Southwest Regional Office
300 Desmond Drive
Lacey, WA 98501
Phone: (360) 407-6266
Email: drea461@ecy.wa.gov

Meg Bommarito

Public Involvement Coordinator
Washington State Department of Ecology
300 Desmond Drive
Lacey, WA 98503
Phone: (360) 407-6255

Figure 1. B&L Woodwaste Site Location

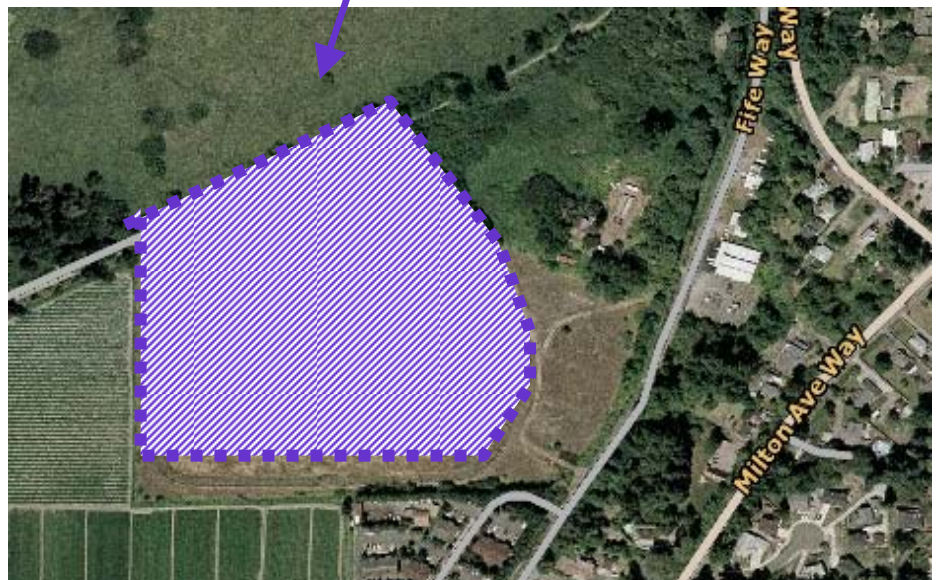


Figure 2. Steps in the Model Toxics Control Act Cleanup Process

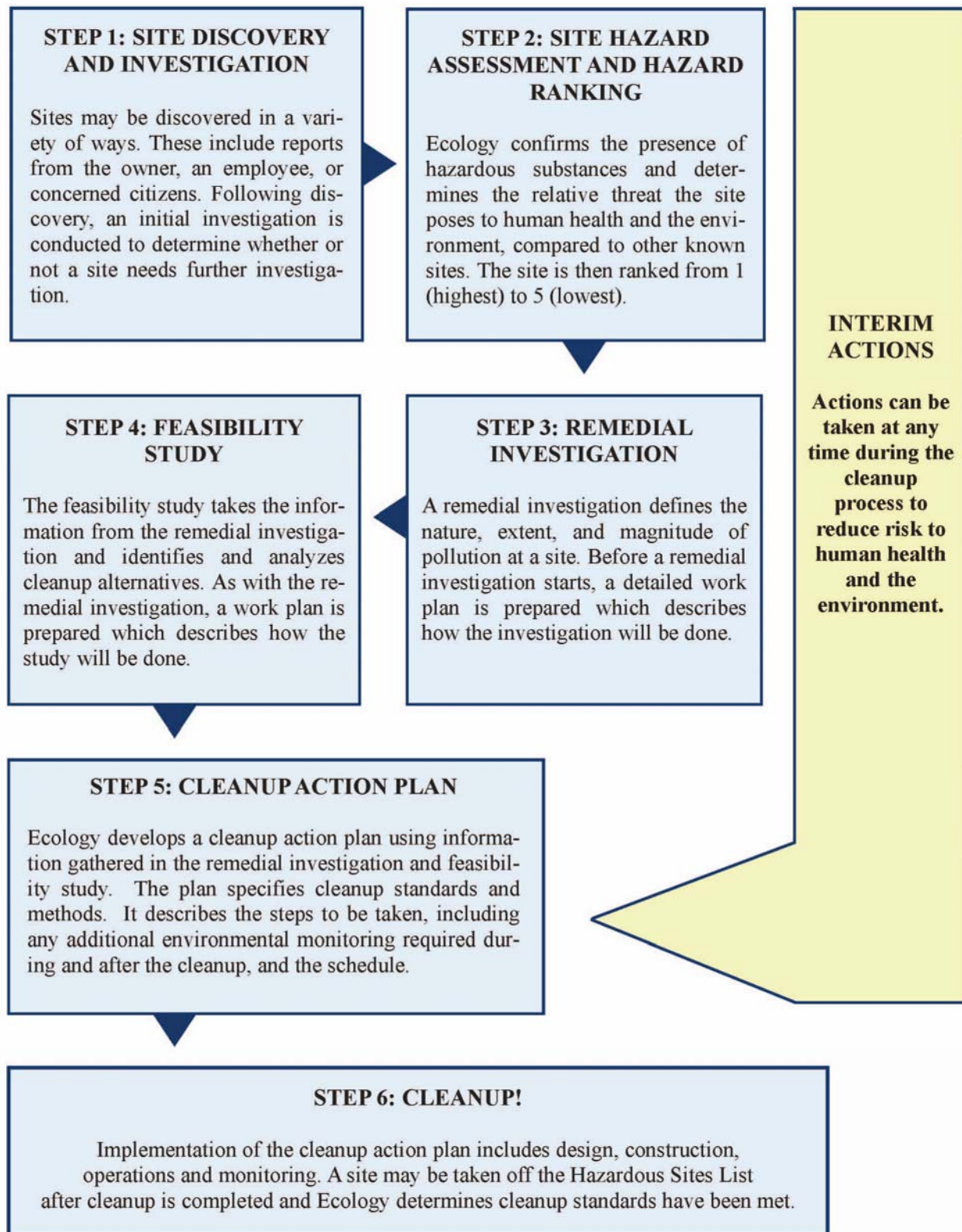


Figure 3. Final Cleanup Remedies

The Cleanup Action Plan for the B&L Woodwaste site requires cleanup remedies in three areas; the landfill and surrounding ditches, the wetlands, and the end of the plume.

End of Plume

- Groundwater in the area will be treated to stop movement of arsenic beyond the wetland.
- Long term monitoring to ensure arsenic levels are below Model Toxic Control Act standards.

Wetlands

- Treatment will be used to remove arsenic from the groundwater plume in the wetland.

Landfill and Surrounding Ditches

- Installation of a perimeter slurry wall around the landfill to provide a barrier that prevents contaminated groundwater from moving away from the landfill.
- Removal and treatment of contaminated water from beneath the capped landfill.
- Excavation and disposal of contaminated sediments in the drainage ditches.

