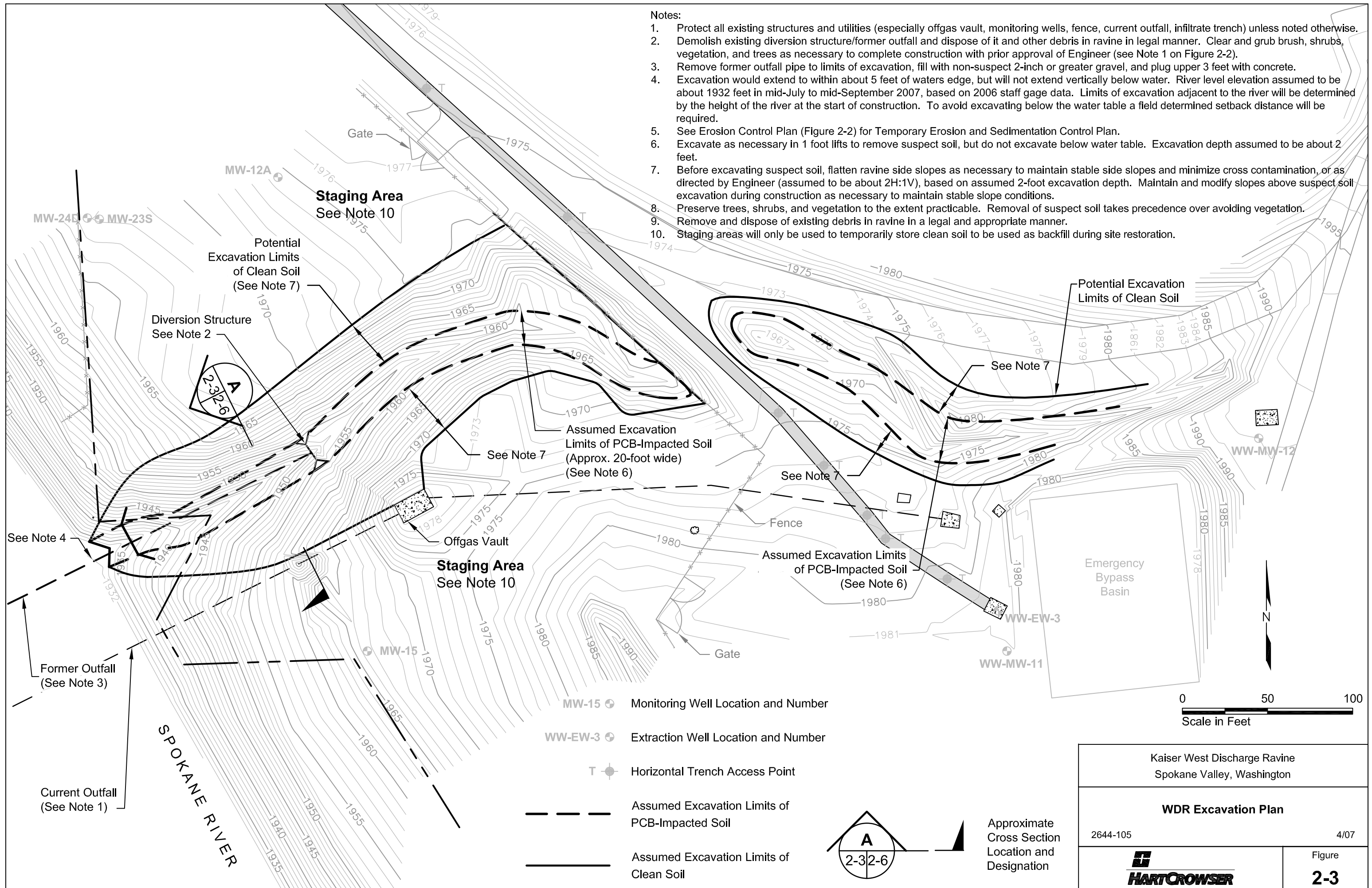


Notes:

1. Protect all existing structures and utilities (especially offgas vault, monitoring wells, fence, current outfall, infiltrate trench) unless noted otherwise.
2. Demolish existing diversion structure/former outfall and dispose of it and other debris in ravine in legal manner. Clear and grub brush, shrubs, vegetation, and trees as necessary to complete construction with prior approval of Engineer (see Note 1 on Figure 2-2).
3. Remove former outfall pipe to limits of excavation, fill with non-suspect 2-inch or greater gravel, and plug upper 3 feet with concrete.
4. Excavation would extend to within about 5 feet of waters edge, but will not extend vertically below water. River level elevation assumed to be about 1932 feet in mid-July to mid-September 2007, based on 2006 staff gage data. Limits of excavation adjacent to the river will be determined by the height of the river at the start of construction. To avoid excavating below the water table a field determined setback distance will be required.
5. See Erosion Control Plan (Figure 2-2) for Temporary Erosion and Sedimentation Control Plan.
6. Excavate as necessary in 1 foot lifts to remove suspect soil, but do not excavate below water table. Excavation depth assumed to be about 2 feet.
7. Before excavating suspect soil, flatten ravine side slopes as necessary to maintain stable side slopes and minimize cross contamination, or as directed by Engineer (assumed to be about 2H:1V), based on assumed 2-foot excavation depth. Maintain and modify slopes above suspect soil excavation during construction as necessary to maintain stable slope conditions.
8. Preserve trees, shrubs, and vegetation to the extent practicable. Removal of suspect soil takes precedence over avoiding vegetation.
9. Remove and dispose of existing debris in ravine in a legal and appropriate manner.
10. Staging areas will only be used to temporarily store clean soil to be used as backfill during site restoration.



EAL 05/21/07 2644105-011.dwg

Kaiser West Discharge Ravine Spokane Valley, Washington	
WDR Excavation Plan	
2644-105	4/07
 HARTCROWSER	Figure 2-3