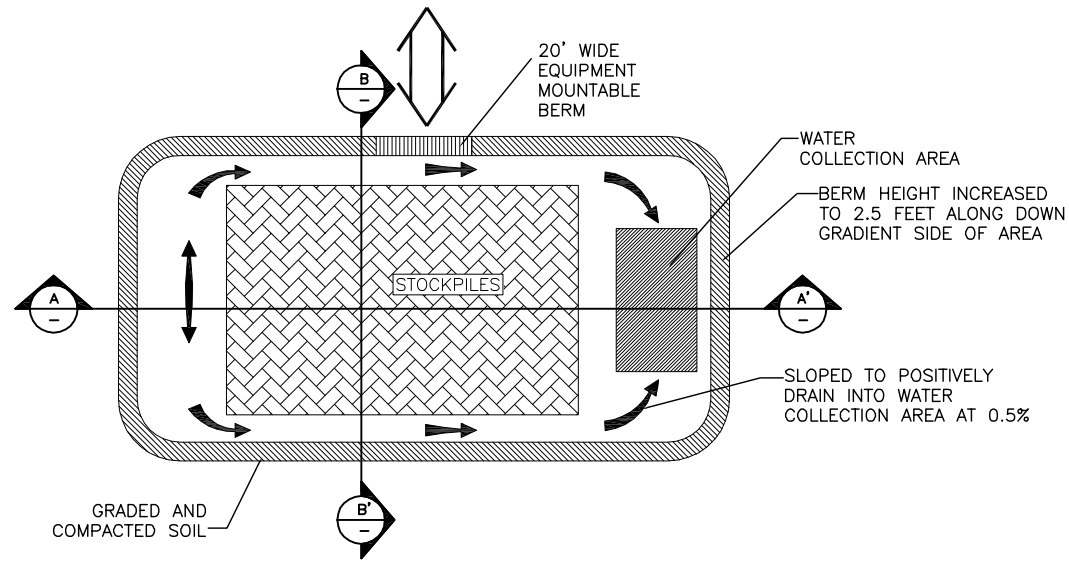
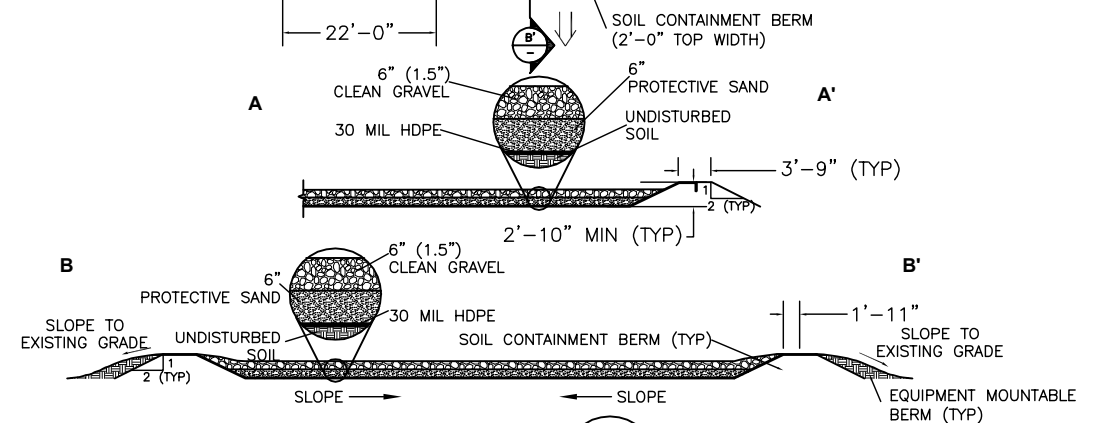
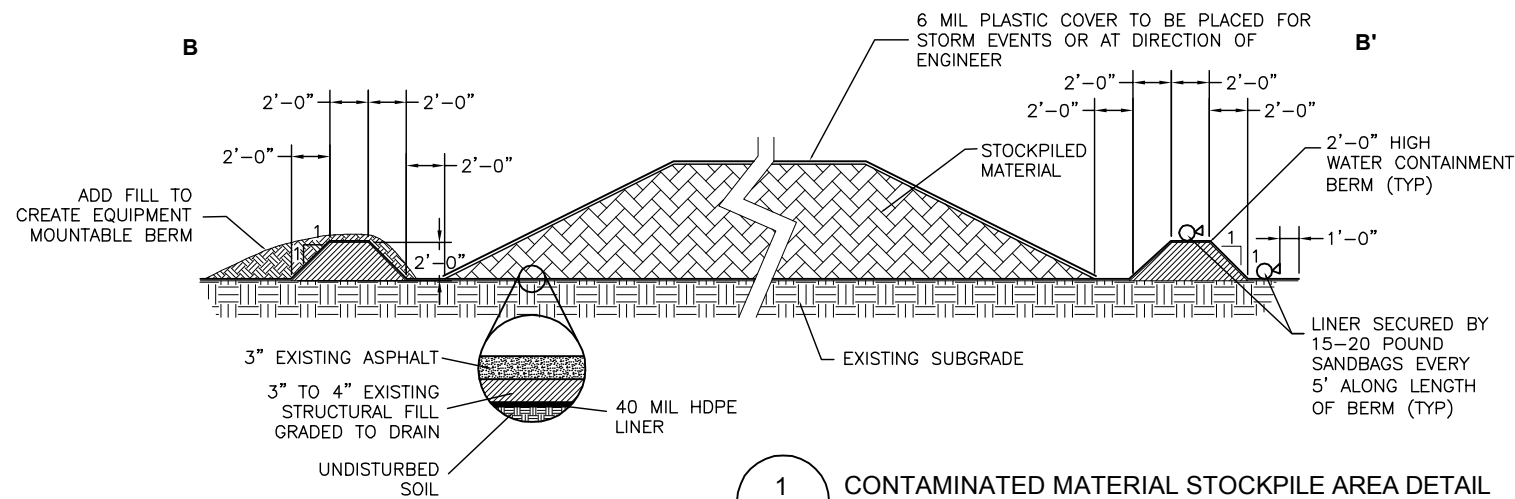
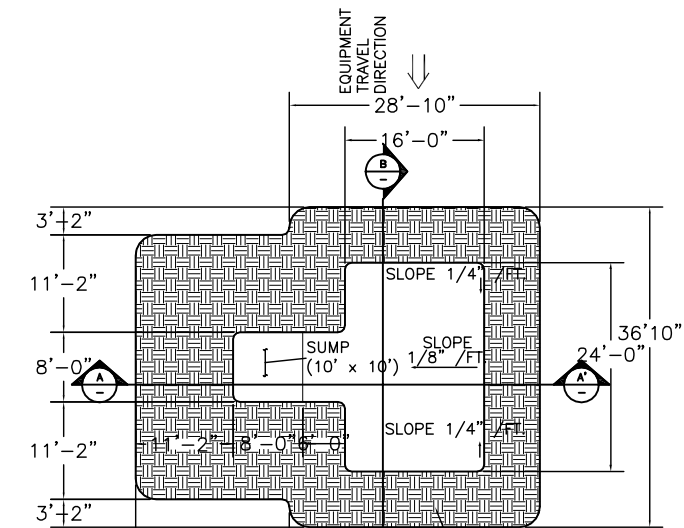
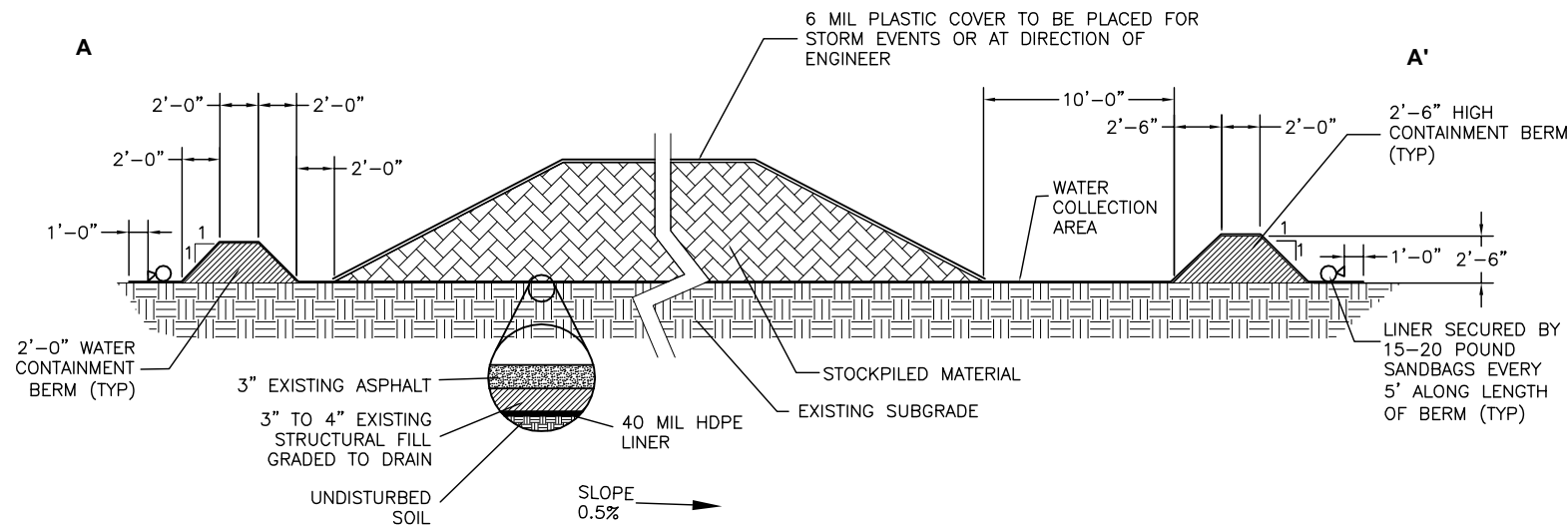


File: H:\BNSF-Skykomish\2008 remediation\30% drawings\sediment-erosion_details(E).dwg Layout: C-16 User: emarshall Plotted: Jan 09, 2008 - 12:24pm Xref's:



NOTES:

1. EXISTING STOCKPILE AREA DETAILS ARE SHOWN. THIS AREA WILL BE USED TO THE EXTENT PRACTICABLE. ALL CONSTRUCTION DETAILS AND SUBSEQUENT NOTES SHOWN WILL BE USED TO CONSTRUCT ADDITIONAL AREAS, IF REQUIRED.
2. STOCKPILE AREA DIMENSIONS AND SHAPE MAY VARY. ACTUAL SIZE WILL BE DETERMINED BASED ON SITE CONDITIONS AND REQUIRED STORAGE AREA. CONTRACTOR SHALL DETERMINE FINAL SIZE OF AREA WITH APPROVAL BY SITE ENGINEER.
3. STOCKPILE AREA IS TO BE GRADED TO POSITIVELY DRAIN TOWARDS THE WATER COLLECTION AREA.
4. CONTAINMENT BERMS SHALL BE CONSTRUCTED OF UNIMPACTED SOIL. PLACE WATER CONTAINMENT BERM SOILS IN MAXIMUM OF 12" LIFTS.
5. WATER CONTAINMENT BERMS ARE TO BE MOISTURE CONDITIONED AND COMPACTED TO A FIRM, UNYIELDING CONDITION, AS DIRECTED BY THE SITE ENGINEER.
6. DAILY INSPECTION AND MAINTENANCE OF THE WATER CONTAINMENT BERMS IS REQUIRED DURING PERIODS OF PRECIPITATION.
7. CONTRACTOR SHALL REMOVE WATER FROM COLLECTION SUMP, FILTER IT FOR DISPOSAL AT THE CONSTRUCTION WATER TREATMENT SYSTEM, AND HAUL IT TO THE WATER TREATMENT SYSTEM VIA TRUCK.
8. SOLIDS ACCUMULATED IN THE SUMP WILL BE REMOVED PERIODICALLY AND PLACED ON THE STOCKPILE.
9. UPON COMPLETION OF THE WORK, THE CONTAMINATED MATERIAL STOCKPILE AREA SHALL BE REMOVED, AND THE AREA GRADED.
10. ANY DAMAGE TO CONTAMINATED MATERIAL STOCKPILE AREA MUST BE REPORTED TO THE SITE ENGINEER IMMEDIATELY.
11. ALL WELLS TO BE PROTECTED DURING INSTALLATION AND REMOVAL OF STOCKPILE AREA.
12. WATER COLLECTED FROM WHEEL WASH/DECON AREA SHOULD BE REMOVED AND DISPOSED OF OR RECYCLED AT A LICENSED FACILITY.



1 CONTAMINATED MATERIAL STOCKPILE AREA DETAIL
C-15 SCALE: NTS

2 DECONTAMINATION AREA DETAIL
C-15 SCALE: NTS

30% DRAWINGS - NOT FOR CONSTRUCTION

ENSR | AECOM



5						
4						
3						
2						
B	EM	12/20/07	REVISION			
A	EM	11/15/07	30% DRAWINGS - NOT FOR CONSTRUCTION			
NO	DRWN	DATE	REVISION	CHKD	DATE	APPVD

THE BNSF RAILWAY COMPANY
SKYKOMISH, WASHINGTON

01140-204-270

CURRENT DATE 12/20/07

SKYKOMISH 2008 EDR
SEDIMENT AND EROSION CONTROL DETAILS
SHEET 1 OF 2

DRAWING NO. C-16

REVISION