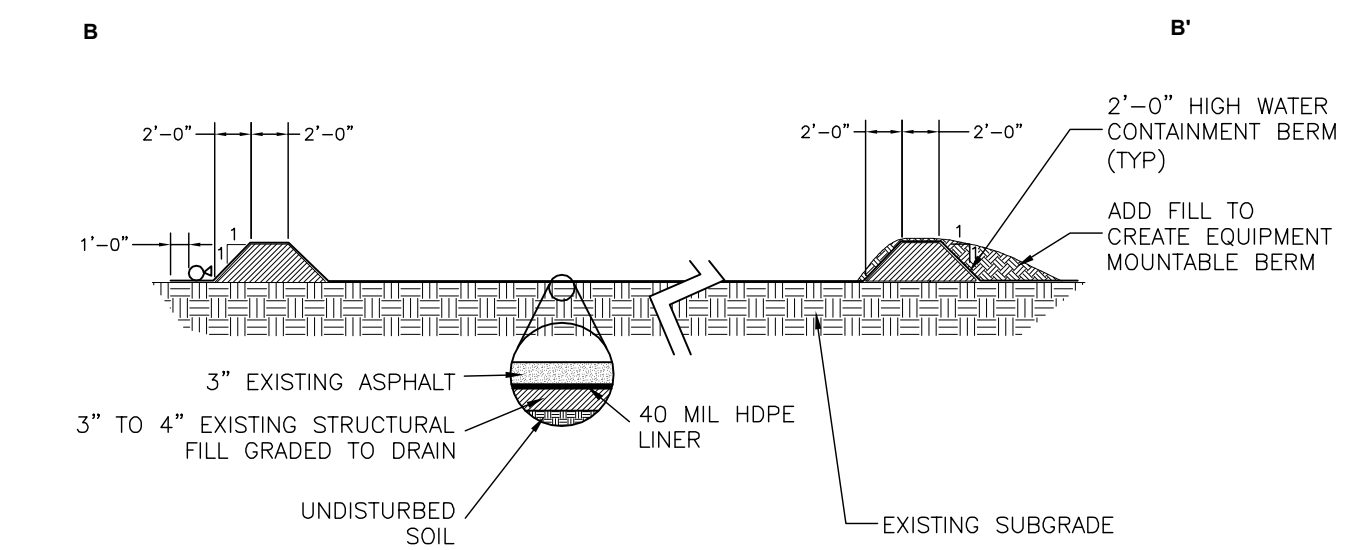
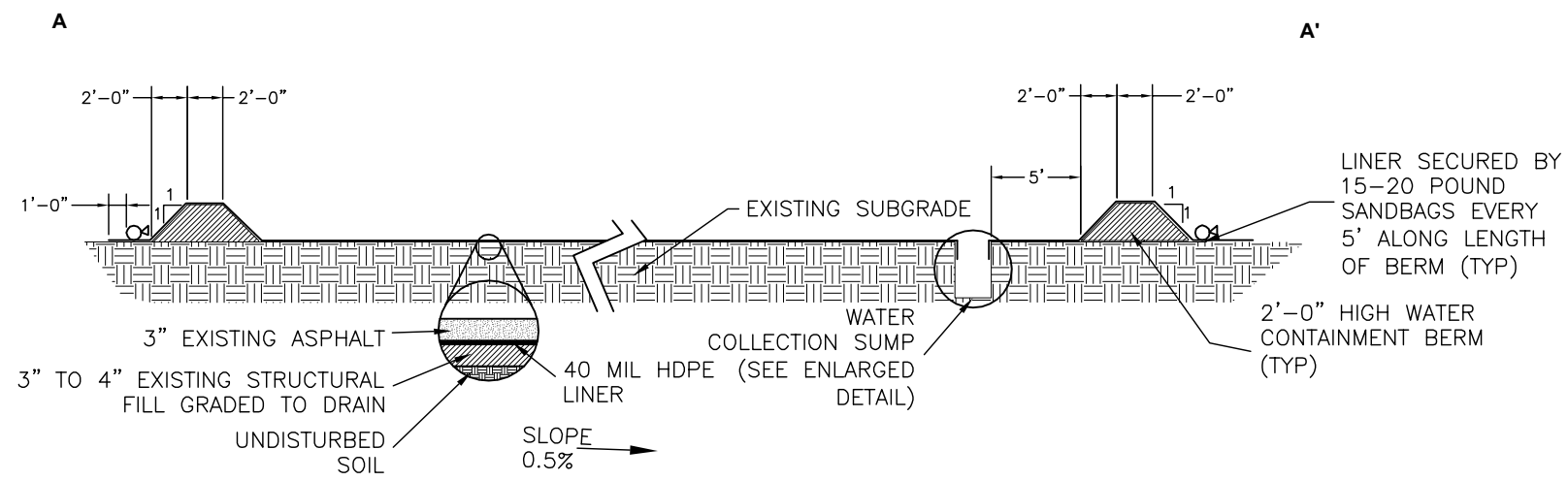
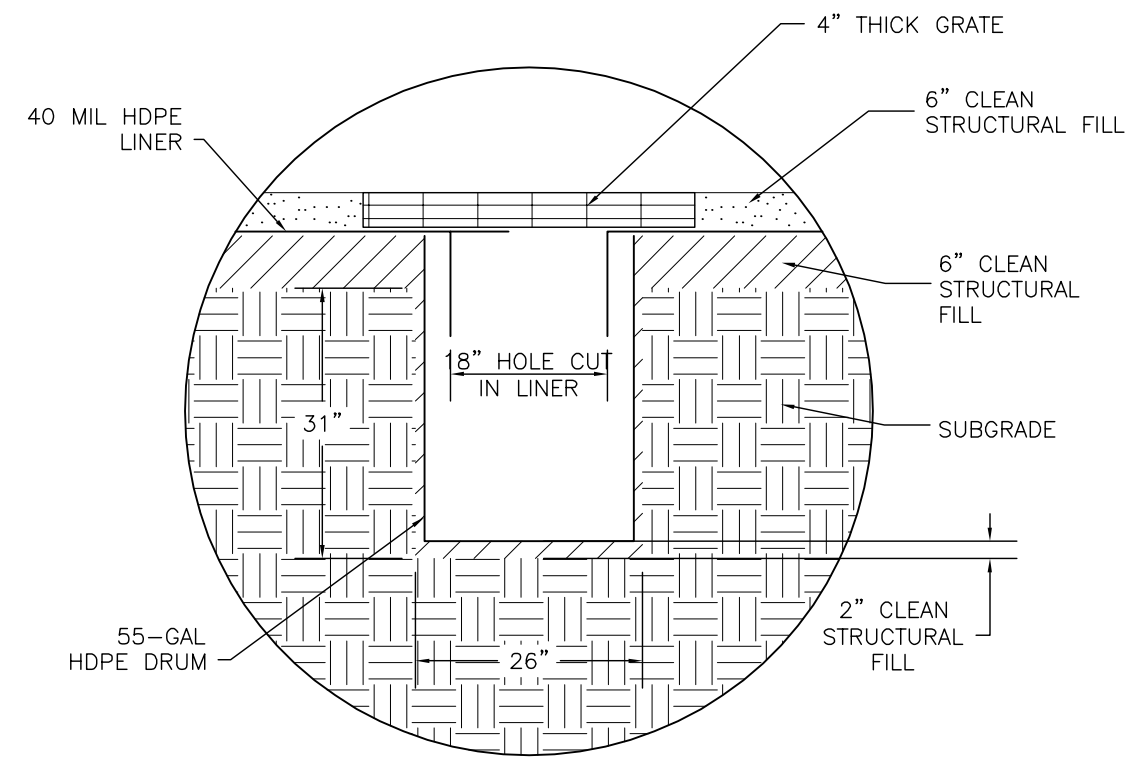
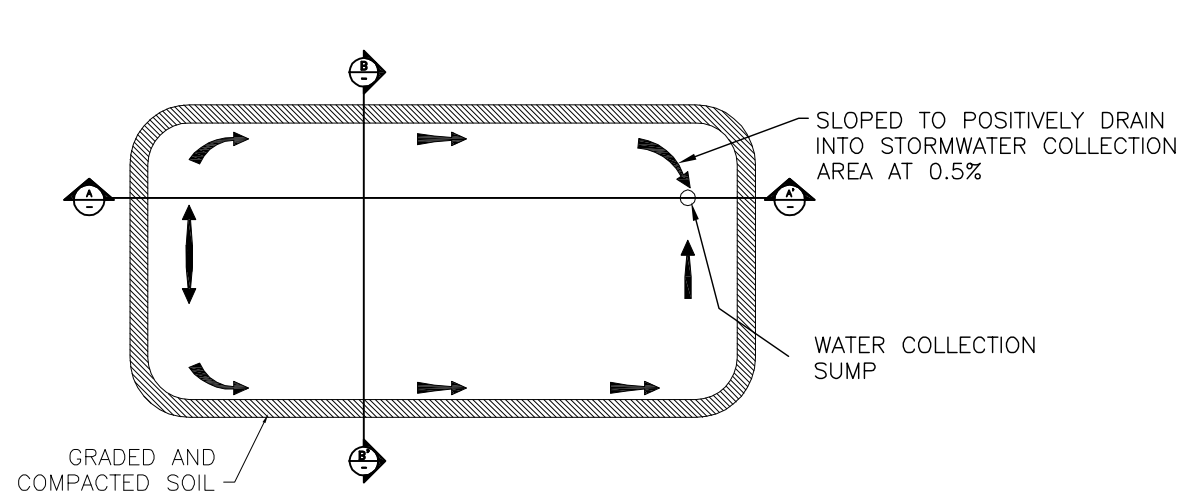


File: H:\BNSF-Skykomish\2008 remediation\30% drawings\sediment-erosion\_details(D).dwg Layout: C-17 User: emarshall Plotted: Dec 21, 2007 - 9:37am Xref's:



**3** WATER TREATMENT AREA DETAIL  
C-15 SCALE: NTS

**NOTES:**

1. WATER TREATMENT PLANT AREA IS TO BE GRADED TO POSITIVELY DRAIN TOWARDS THE WATER COLLECTION SUMP.
2. CONTAINMENT BERMS SHALL BE CONSTRUCTED OF UNIMPACTED SOIL. PLACE CONTAINMENT BERM SOILS IN MAXIMUM OF 12" LIFTS. CONTAINMENT BERMS ARE TO BE MOISTURE CONDITIONED AND COMPACTED TO A FIRM, UNYIELDING CONDITION, AS DIRECTED BY THE SITE ENGINEER.
3. PERIODIC INSPECTION AND MAINTENANCE OF THE CONTAINMENT BERMS IS REQUIRED FOR THE DURATION OF THE PROJECT.
4. SOLIDS ACCUMULATED IN THE SUMP WILL BE EXCAVATED PERIODICALLY BY THE SUBCONTRACTOR AND PLACED ON THE WASTE MATERIAL STOCKPILE.
5. ANY DAMAGE TO WATER TREATMENT AREA MUST BE REPORTED TO THE SITE ENGINEER IMMEDIATELY.
6. LINER SHALL BE 40 MIL HDPE ONE SOLID SHEET OR SEAMS SHALL BE WELDED PER SPECIFICATIONS AND MANUFACTURER'S RECOMMENDATIONS. NO OVERLAP IS ALLOWED.
7. SUMP SHALL BE A 55-GALLON HDPE DRUM. A HOLE SHALL BE CUT IN THE LINER CENTERED OVER THE DRUM TO ALLOW WATER TO DRAIN INTO THE DRUM.
8. GRATE OVER SUMP WILL BE OF SUFFICIENT STRENGTH TO WITHSTAND VEHICLE TRAFFIC AND EXTEND AT LEAST 6 INCHES PAST THE SUMP EXCAVATION ON ALL SIDES. SLOPES WILL BE GRADED TO THE SUMP.

**30% DRAWINGS - NOT FOR CONSTRUCTION**

		THE BNSF RAILWAY COMPANY SKYKOMISH, WASHINGTON 01140-204-270		SKYKOMISH 2008 EDR SEDIMENT AND EROSION CONTROL DETAILS SHEET 2 OF 2	
Merged with ENSR in 2007 		CURRENT DATE 12/20/07		DRAWING NO. C-17	
5					
4					
3					
2					
B	EM	12/20/07	REVISION		
A	EM	11/15/07	30% DRAWINGS - NOT FOR CONSTRUCTION		
NO	DRWN	DATE	REVISION	CHKD	DATE