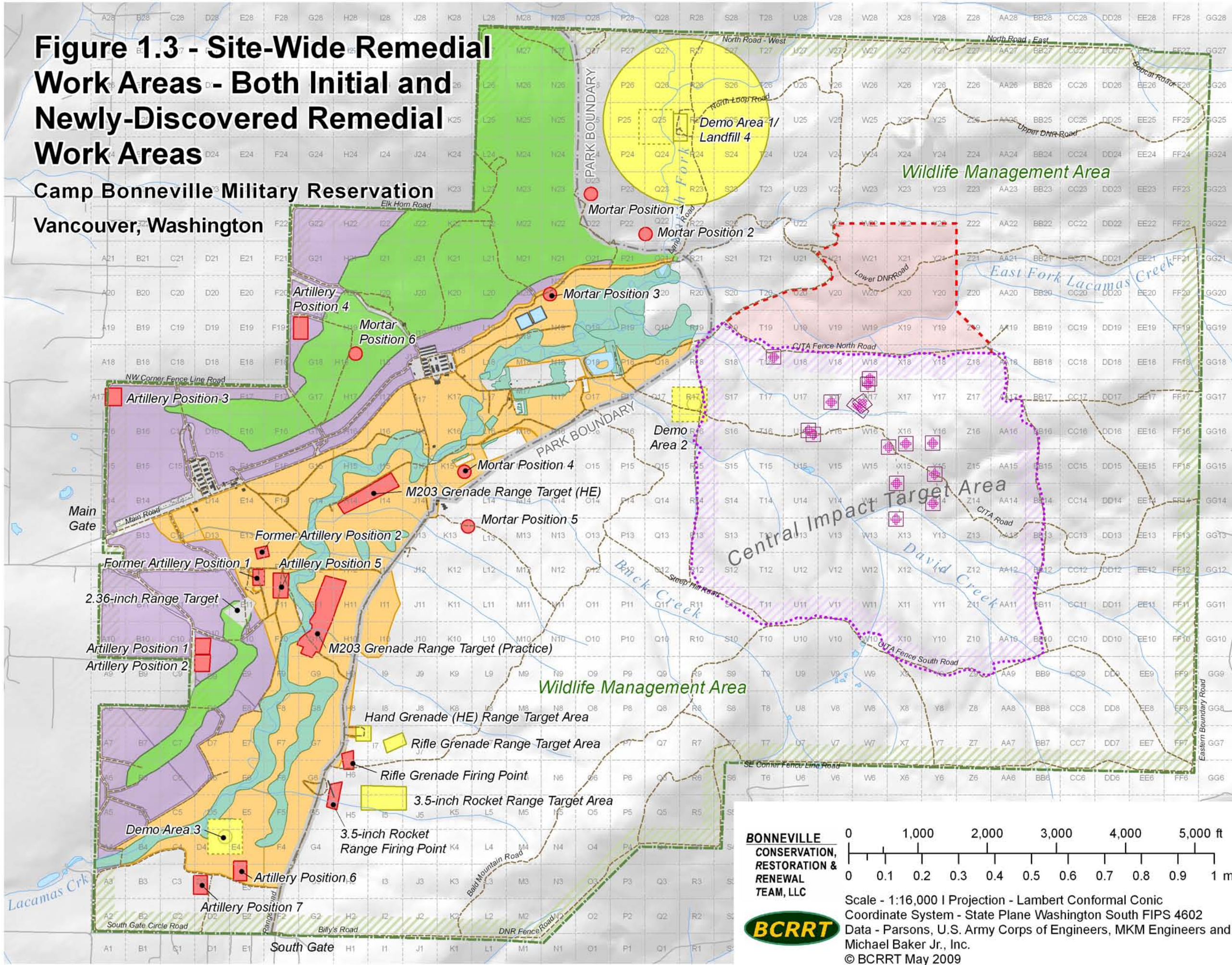


Figure 1.3 - Site-Wide Remedial Work Areas - Both Initial and Newly-Discovered Remedial Work Areas

Camp Bonneville Military Reservation
Vancouver, Washington

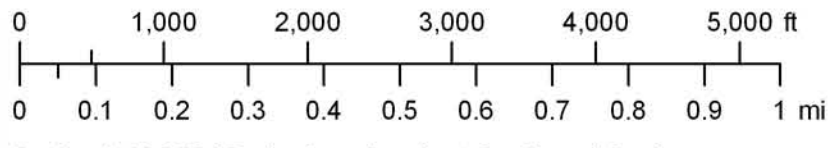


Recommended Clearance Depths

- Site grid (with grid # shown)
 - CITA (Central Impact Target Area / Central Impact Area)
 - CITA targets
 - Northern CITA expansion (fence)
 - Western Slopes - Surface clearance (areas less than 25% slope)
 - Western Slopes - Site-wide IC's (areas greater than 25% slope)
 - Surface clearance
 - Firing points - Sub-surface (to 14-in)
- ### Central Valley Floor
- Frost-depth clearance (to 14-in)
 - Frost-depth clearance (to 14-in) with wetland protocols

Target areas and Open Burn / Open Demolition areas are identified by labels only.

**BONNEVILLE
CONSERVATION,
RESTORATION &
RENEWAL
TEAM, LLC**



Scale - 1:16,000 | Projection - Lambert Conformal Conic
Coordinate System - State Plane Washington South FIPS 4602
Data - Parsons, U.S. Army Corps of Engineers, MKM Engineers and Michael Baker Jr., Inc.
© BCRRT May 2009