
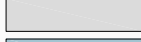









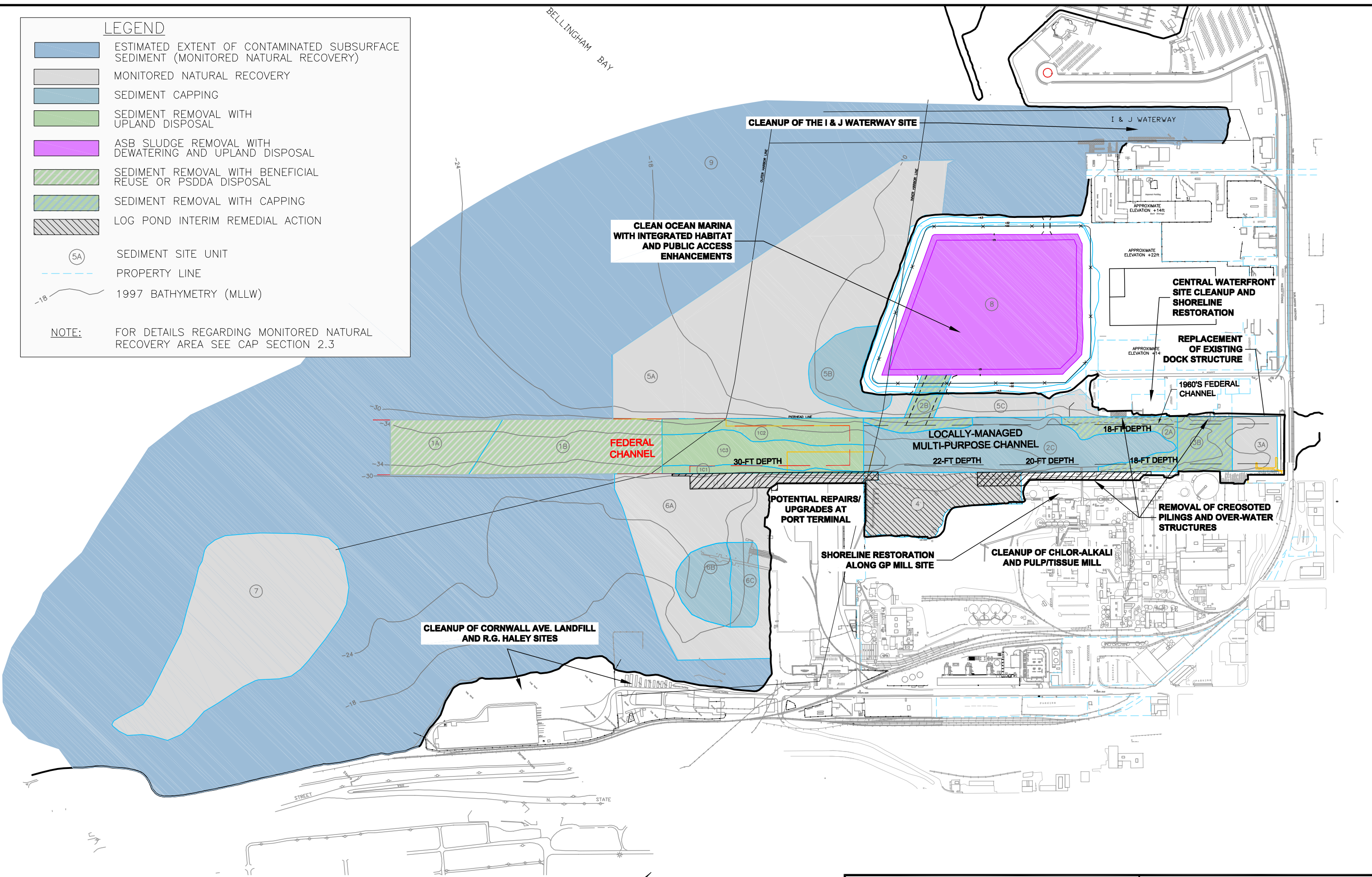


File: H:\18876\DCAP\18876DCAP015.dwg Layout: FIGURE 7-1 User: emarshall Plotted: Jul 06, 2007 - 11:16am Xref's:

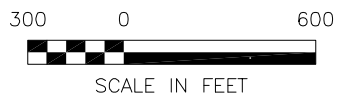
**LEGEND**

-  ESTIMATED EXTENT OF CONTAMINATED SUBSURFACE SEDIMENT (MONITORED NATURAL RECOVERY)
-  MONITORED NATURAL RECOVERY
-  SEDIMENT CAPPING
-  SEDIMENT REMOVAL WITH UPLAND DISPOSAL
-  ASB SLUDGE REMOVAL WITH DEWATERING AND UPLAND DISPOSAL
-  SEDIMENT REMOVAL WITH BENEFICIAL REUSE OR PSDDA DISPOSAL
-  SEDIMENT REMOVAL WITH CAPPING
-  LOG POND INTERIM REMEDIAL ACTION
-  SEDIMENT SITE UNIT
-  PROPERTY LINE
-  1997 BATHYMETRY (MLLW)

**NOTE:** FOR DETAILS REGARDING MONITORED NATURAL RECOVERY AREA SEE CAP SECTION 2.3

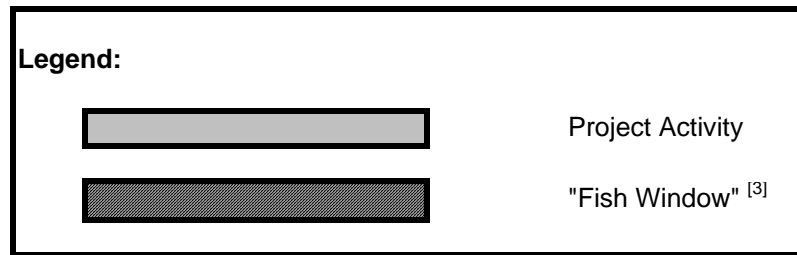
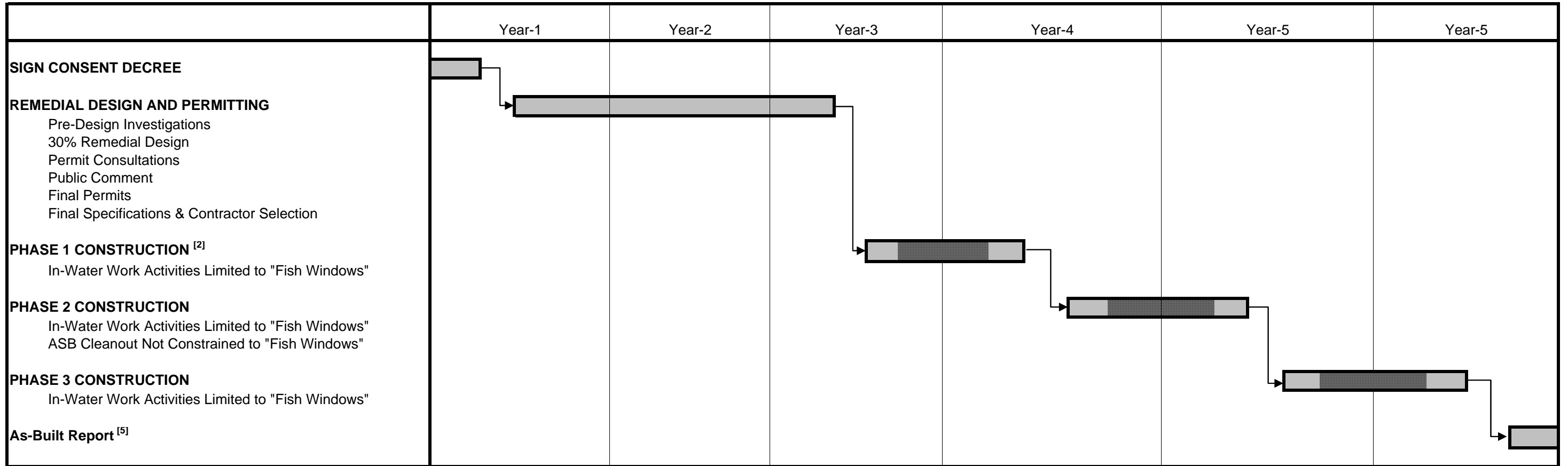


ENSR | AECOM



<b>WHATCOM WATERWAY CLEANUP ACTION PLAN</b> PORTB-18876		<b>SUMMARY OF RELATED PROJECTS</b>
DATE: 7/6/07	DRWN: E.M./SEA	<b>FIGURE 7-1</b>

**Figure 7-2 Anticipated Implementation Schedule <sup>[1]</sup>**



- Notes:**
- 1 This figure illustrates anticipated schedule for design, permitting and construction activities. Actual duration is subject to change based on time required for permitting, and construction sequence specified in project permits.
  - 2 Three-phase construction sequence is described in Section 4 of the cleanup action plan. Final phasing is subject to change based on permit requirements and final design.
  - 3 Construction activities within Bellingham Bay surface waters are expected to be limited to appropriate seasonal "fish windows" specified in project permits, to avoid impacts to juvenile salmonids.
  - 4 Long-term monitoring activities are not shown. As described in Section 6, these are expected to include monitoring events 1, 3, 5, 10, 20 and 30 years after completion of construction.
  - 5 Restrictive Covenants to be filed prior to Ecology approval of the completion report.