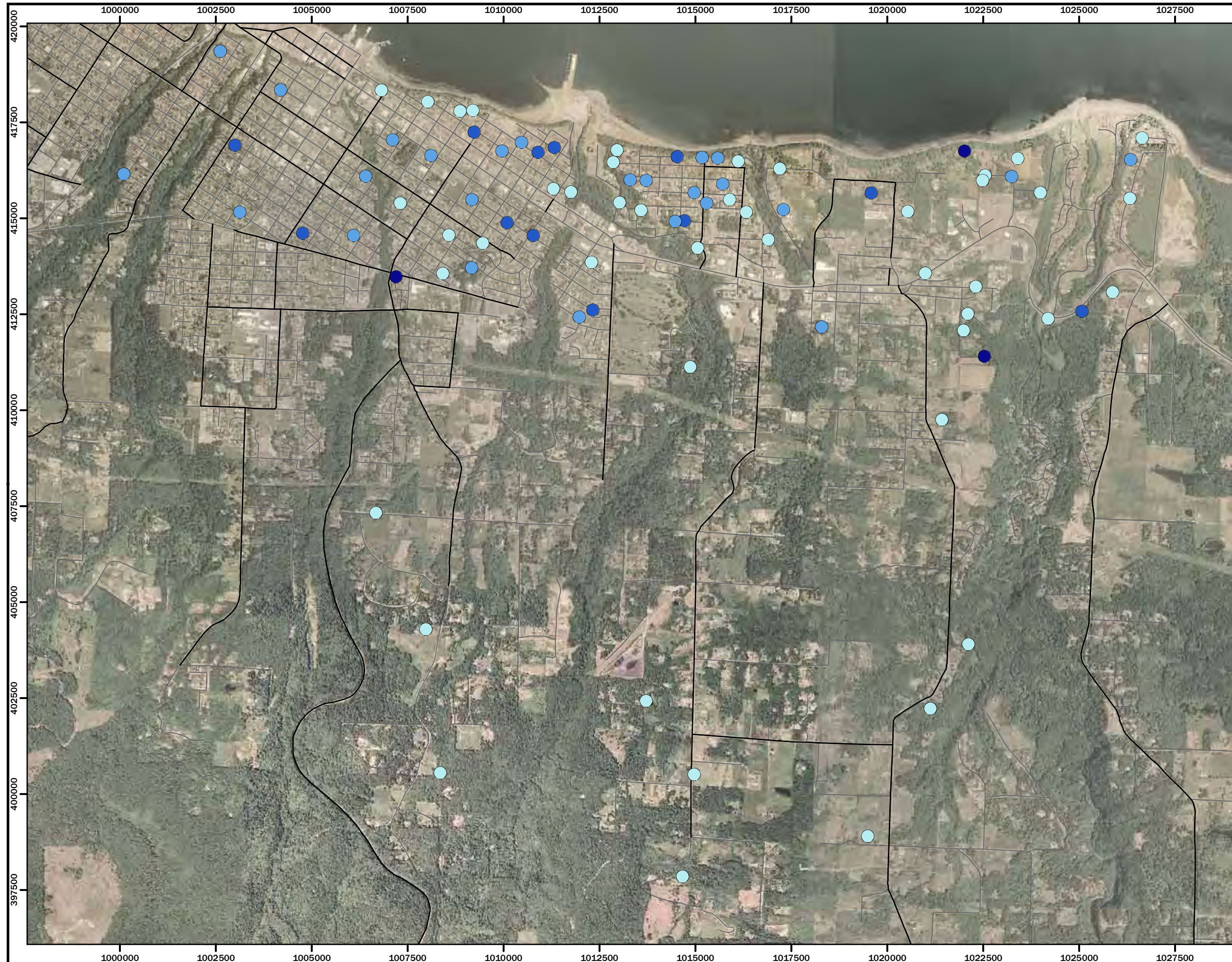


Notes:
Total sample count is 85.
TEQs based on ND=1/2DL.

Figure 3-1. Histogram of TEQ concentrations.

Figure 3-2
Overview of TEQ concentrations across
study area. Rayonier Mill Off-Property
Soil Dioxin Study Port Angeles, WA.



Legend

TEQ (ND=1/2 DL) concentrations
shown in ng/kg
TEQ (ND=1/2 DL) range = 0.8 to
76.3 ng/kg

- 0 to 11
- 11 to 20
- 20 to 30
- > 30

— Arterial or Collector Road

— Road

 **ecology and environment, inc.**
 International Specialists in the Environment

 **HERRERA**
 ENVIRONMENTAL
 CONSULTANTS

0 1,250 2,500 5,000
 feet

Coordinates: Washington State Plane South
 NAD 83 (feet)
 Aerial: USDA, 2006

Produced By: GIS (RDR)
 Project:
 K:\Projects\06-03386-006\Collected_Samples\TEQ_Calc\TEQ Sample Overview.mxd (02/19/2009)



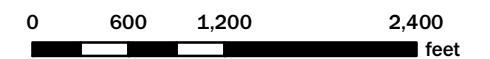
Figure 3-3
TEQ concentrations in Western zones.
Rayonier Mill Off-Property Soil Dioxin
Study Port Angeles, WA.



Legend

TEQ (ND=1/2 DL) concentrations shown in ng/kg

- 0 to 11
- 11 to 20
- 20 to 30
- > 30
- Grid cell boundary
- Arterial or Collector Road
- Road



Coordinates: Washington State Plane South
 NAD 83 (feet)
 Aerial: USDA, 2006

Produced By: GIS (RDR)
 Project:
 K:\Projects\06-03386-006\Collected_Samples\Samples Collected in Western Zone.mxd (02/19/2009)





Figure 3-4
 TEQ concentrations in Eastern zones.
 Rayonier Mill Off-Property Soil Dioxin
 Study Port Angeles, WA.

Legend

TEQ (ND=1/2 DL) concentrations shown in ng/kg

- 0 to 11
- 11 to 20
- 20 to 30
- > 30

Grid cell boundary

Arterial or Collector Road

Road

ecology and environment, inc.
 International Specialists in the Environment

HERRERA
 ENVIRONMENTAL
 CONSULTANTS

0 600 1,200 2,400 feet

Coordinates: Washington State Plane South
 NAD 83 (feet)
 Aerial: USDA, 2006

Produced By: GIS (RDR)
 Project:
 K:\Projects\06-03386-006\Collected_Samples\TEQ_Calc\TEQ Samples Collected in Eastern Zone.mxd

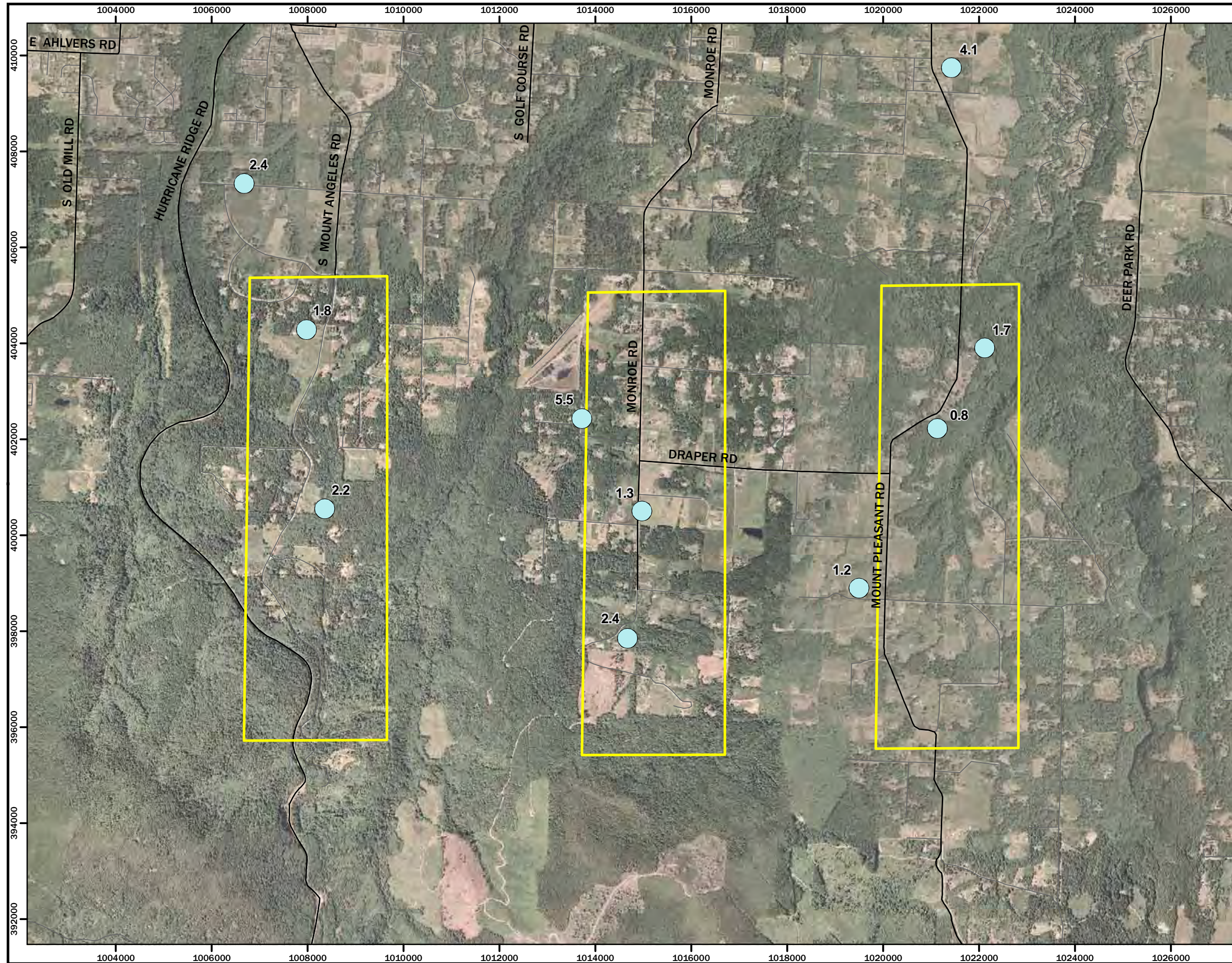


Figure 3-5
 TEQ concentrations in upslope
 transect areas. Rayonier Mill
 Off-Property Soil Dioxin Study
 Port Angeles, WA.

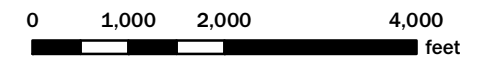
Legend

TEQ (ND=1/2 DL) concentrations
 shown in ng/kg

- 0 to 11
- 11 to 20
- 20 to 30
- > 30
- Upslope transect boundary
- Arterial or Collector Road
- Road

 **ecology and environment, inc.**
 International Specialists in the Environment

 **HERRERA**
 ENVIRONMENTAL
 CONSULTANTS

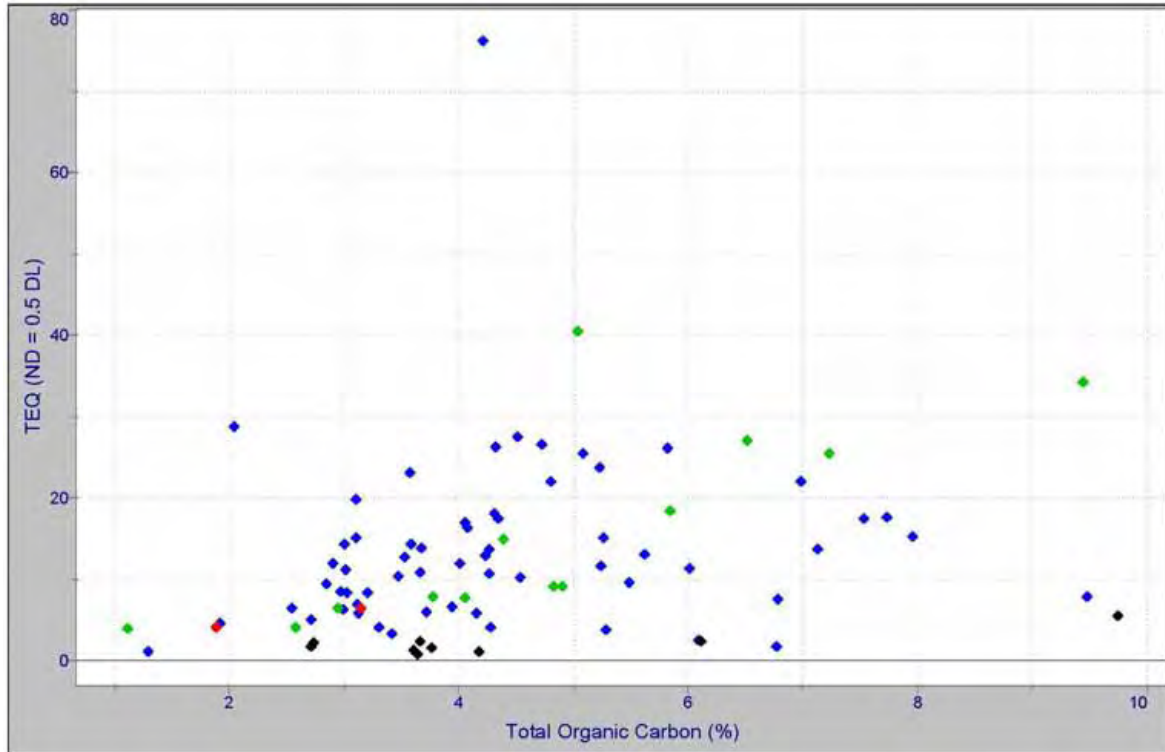


Coordinates: Washington State Plane South
 NAD 83 (feet)
 Aerial: USDA, 2006

Produced By: GIS (RDR)
 Project:
 K:\Projects\06-03386-006\Collected_Samples\TEQ_Calc\TEQ Samples Collected in Upslope Transects.mxd



*Rayonier Mill Off-Property Soil Dioxin Study
Final Data Summary Technical Memorandum*



Notes:
TEQ (ND = 0.5 DL) calculated assuming non-detected congeners present at one-half of the SDL or MDL, as appropriate.
Concentrations are in ng/kg, dry weight.

Key:

- ◆ = Grid sample
- ◆ = Forested sample
- ◆ = Upslope transect sample
- ◆ = Roadside sample

Figure 3-6. Scatter plot showing TEQ concentrations and percent TOC.

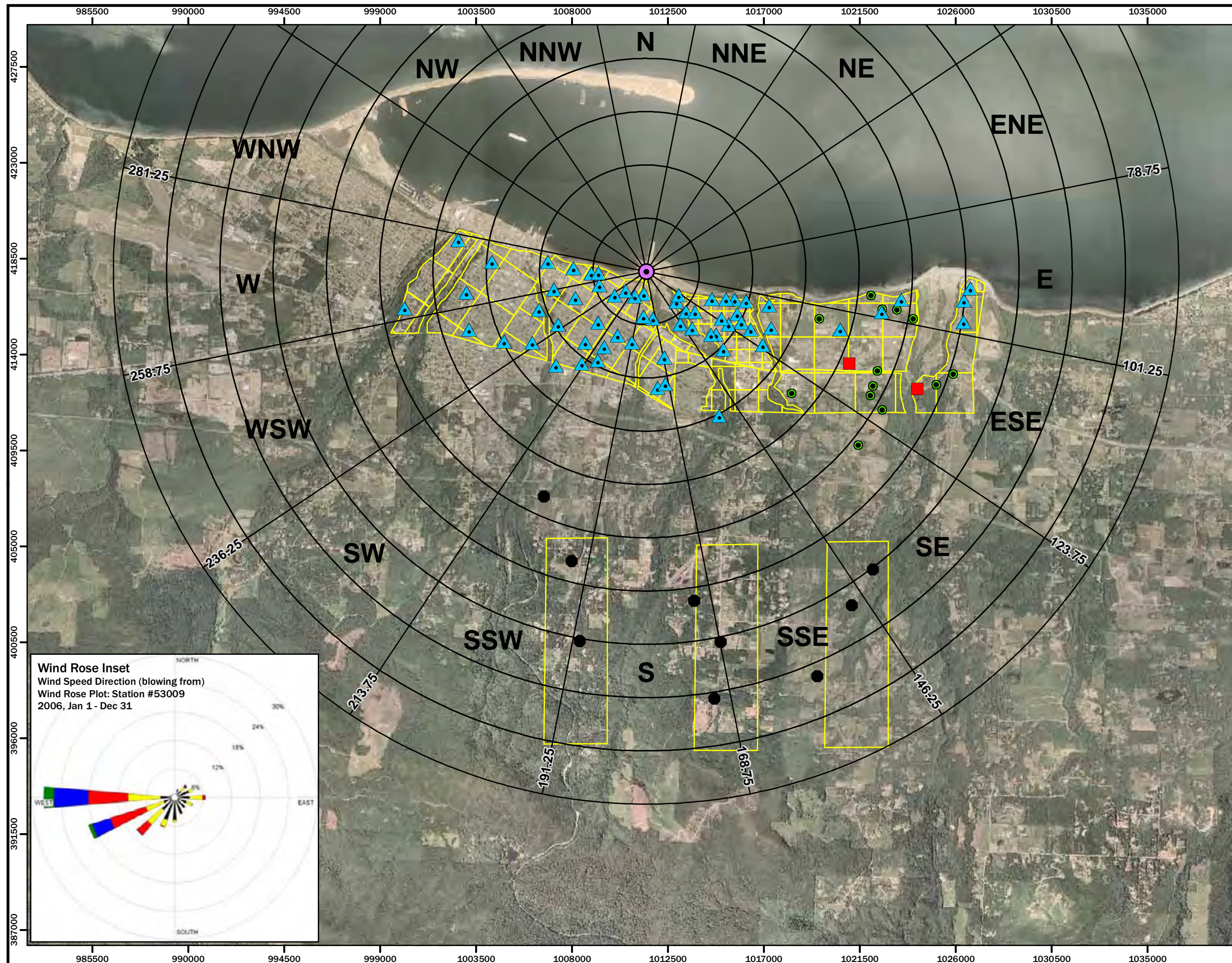


Figure 3-7
 Study area showing sample locations and wind and compass roses with former Rayonier Mill hog fuel boiler as point of origin. Rayonier Mill Off-Property Soil Dioxin Study Port Angeles, WA.

Legend

Grid cell boundary

Collected sample

- Forested
- ▲ Grid
- Highway
- Transect
- Former hog fuel boiler

Wind Rose Inset

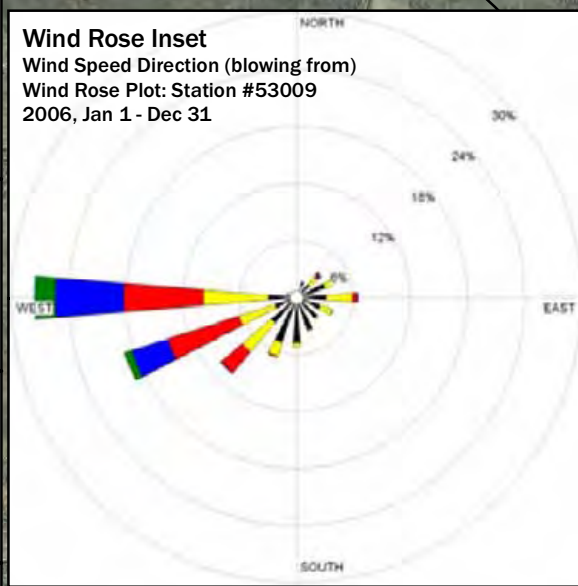
Wind speed (knots)

- >=22
- 17 to 21
- 11 to 17
- 7 to 11
- 4 to 7
- 1 to 4

Calms: 0.55%

Wind Rose Inset

Wind Speed Direction (blowing from)
 Wind Rose Plot: Station #53009
 2006, Jan 1 - Dec 31



ecology and environment, inc.
 International Specialists in the Environment

HERRERA
 ENVIRONMENTAL
 CONSULTANTS

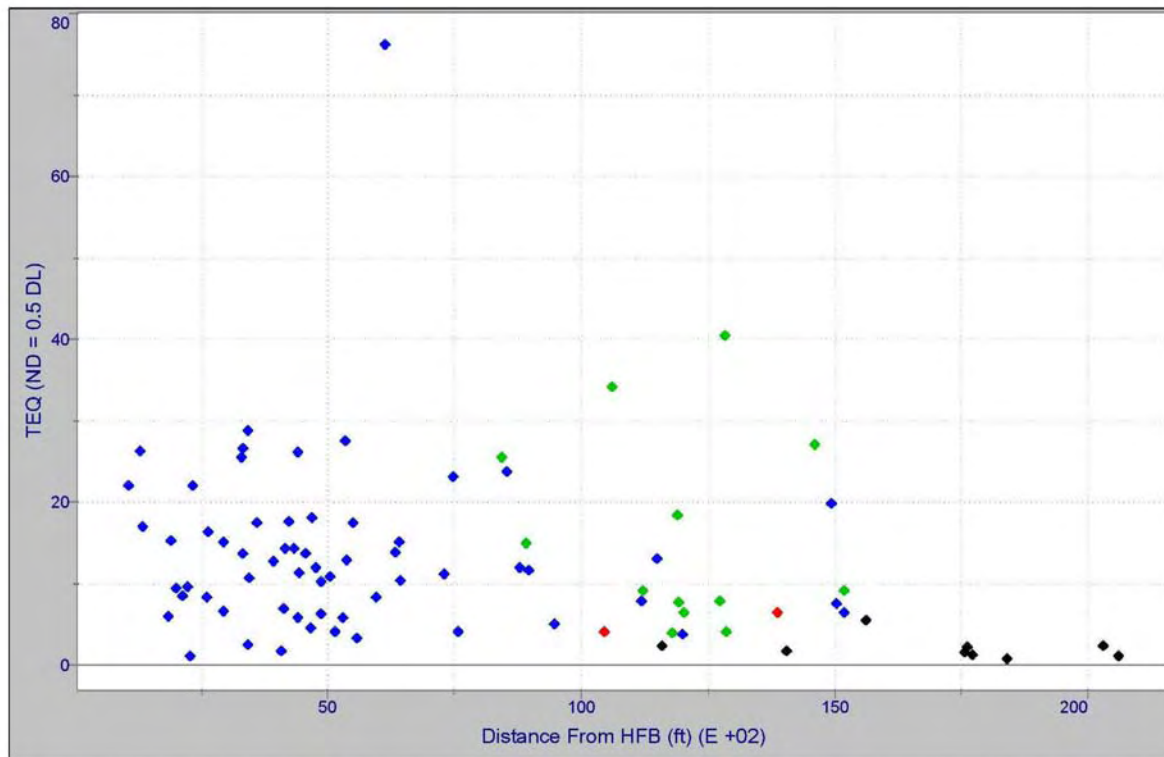
0 2,250 4,500 9,000
 Feet

Coordinates: Washington State Plane South
 NAD 83 (feet)
 Aerial: USDA, 2006

Produced By: GIS (RDR)
 Project:
 K:\Projects\06-03386-006\Projects\Compass Rose Report.mxd



*Rayonier Mill Off-Property Soil Dioxin Study
Final Data Summary Technical Memorandum*



Notes:

TEQ (ND = 0.5 DL) calculated assuming nondetected congeners present at one-half of the SDL or MDL, as appropriate.

Concentrations are in ng/kg, dry weight.

Distance is in hundreds of feet from the former hog fuel boiler (HFB).

Key:

- ◆ = Grid sample
- ◆ = Upslope transect sample
- ◆ = Roadside sample
- ◆ = Forested sample

Figure 3-8. Scatter plot showing TEQ concentrations and distance of samples from the former Rayonier Mill hog fuel boiler.

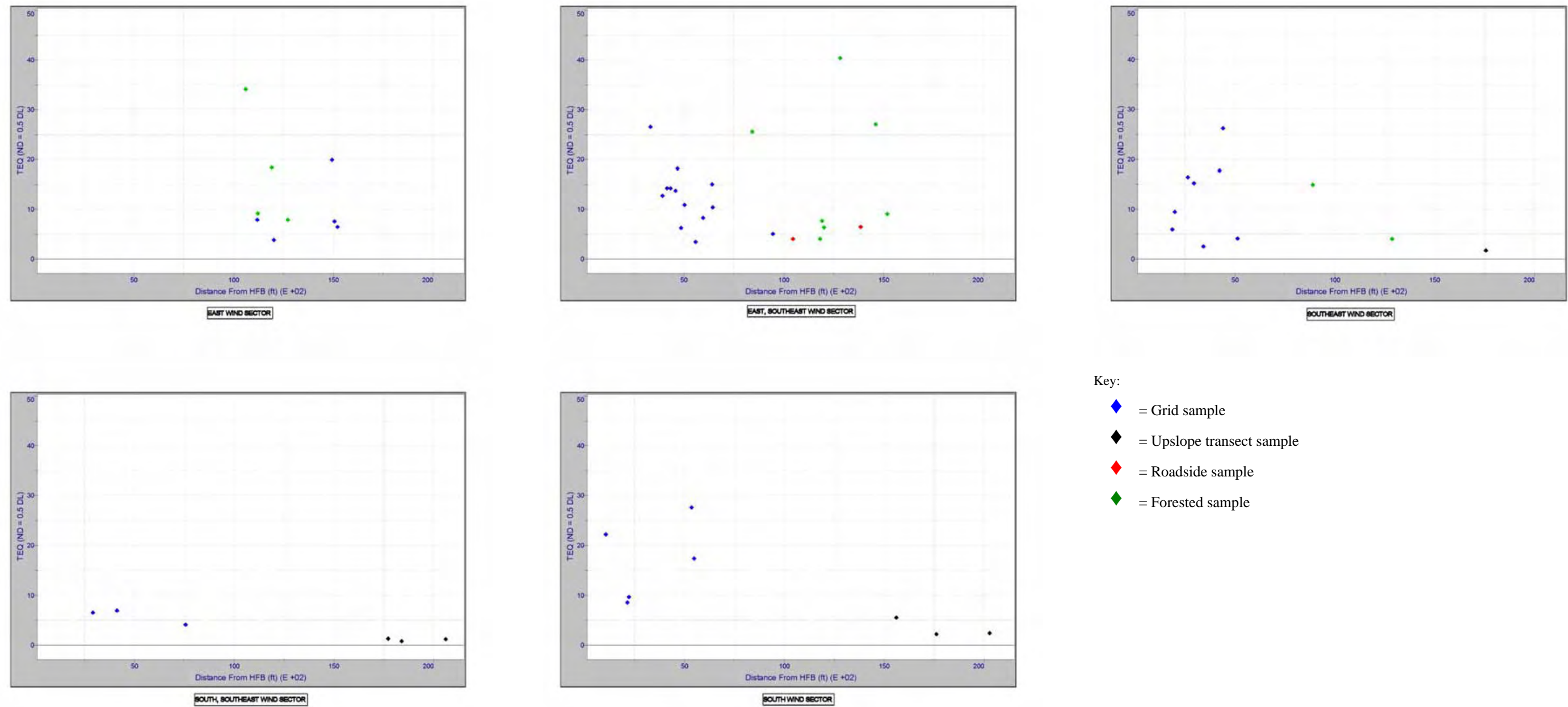
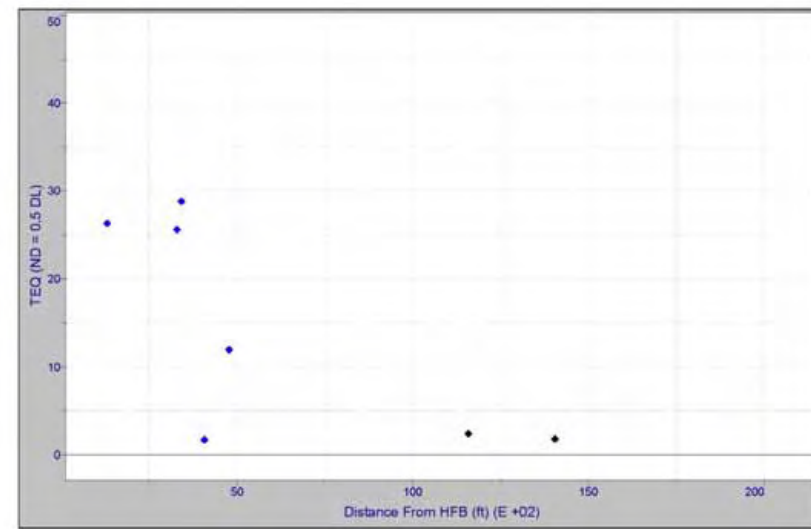
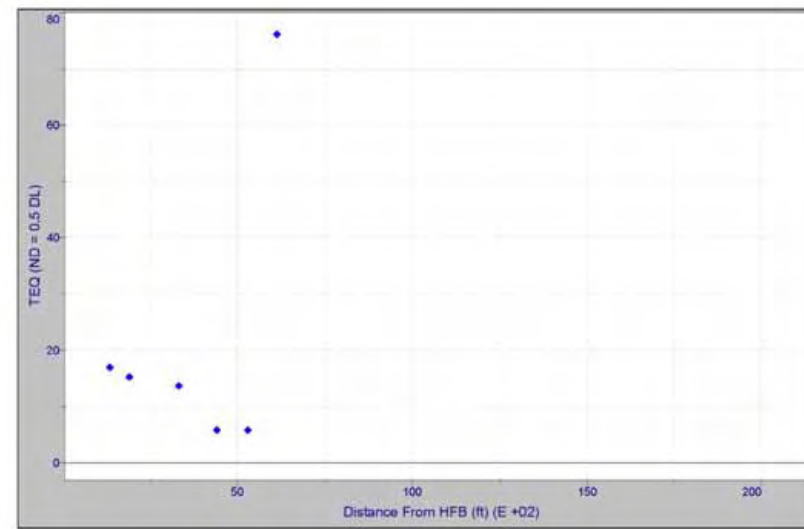


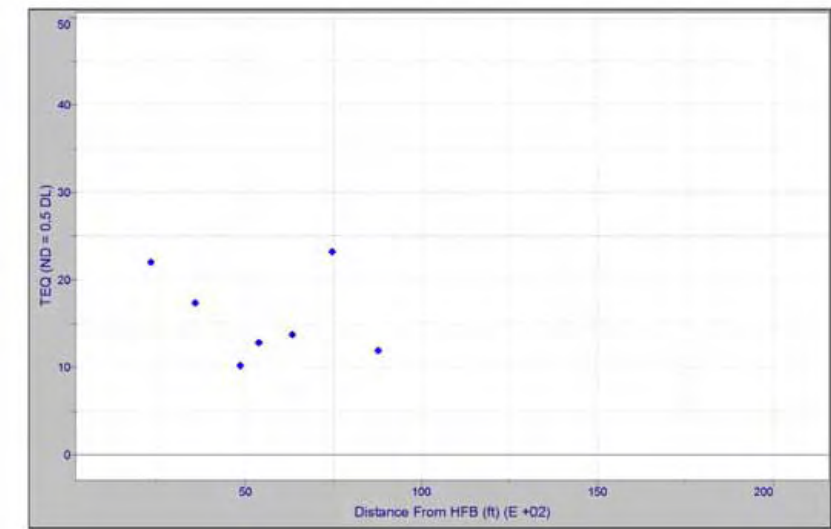
Figure 3-9. Scatter plots showing TEQ concentrations and distance by wind sector.



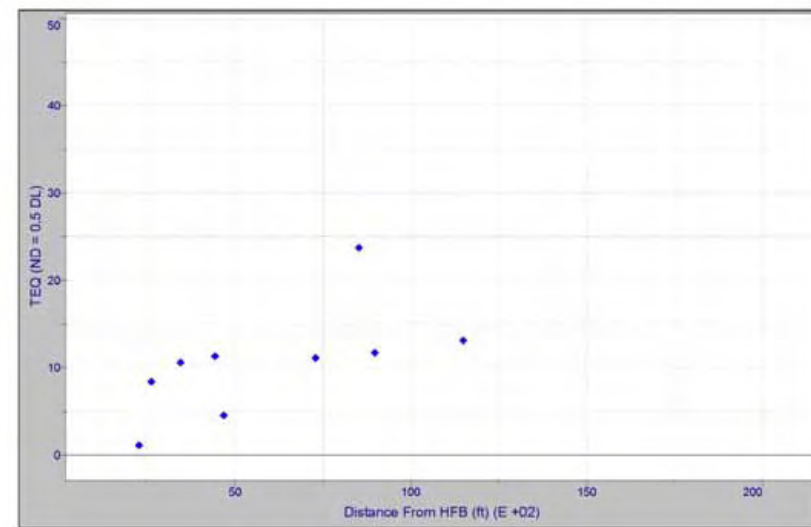
SOUTH, SOUTHWEST WIND SECTOR



SOUTHEAST WIND SECTOR



WEST, SOUTHWEST WIND SECTOR



WEST WIND SECTOR

Key:

- ◆ = Grid sample
- ◆ = Upslope transect sample
- ◆ = Roadside sample
- ◆ = Forested sample

Figure 3-9 (continued). Scatter plots showing TEQ concentrations and distance by wind sector.

Rayonier Mill Off-Property Soil Dioxin Study
Final Data Summary Technical Memorandum

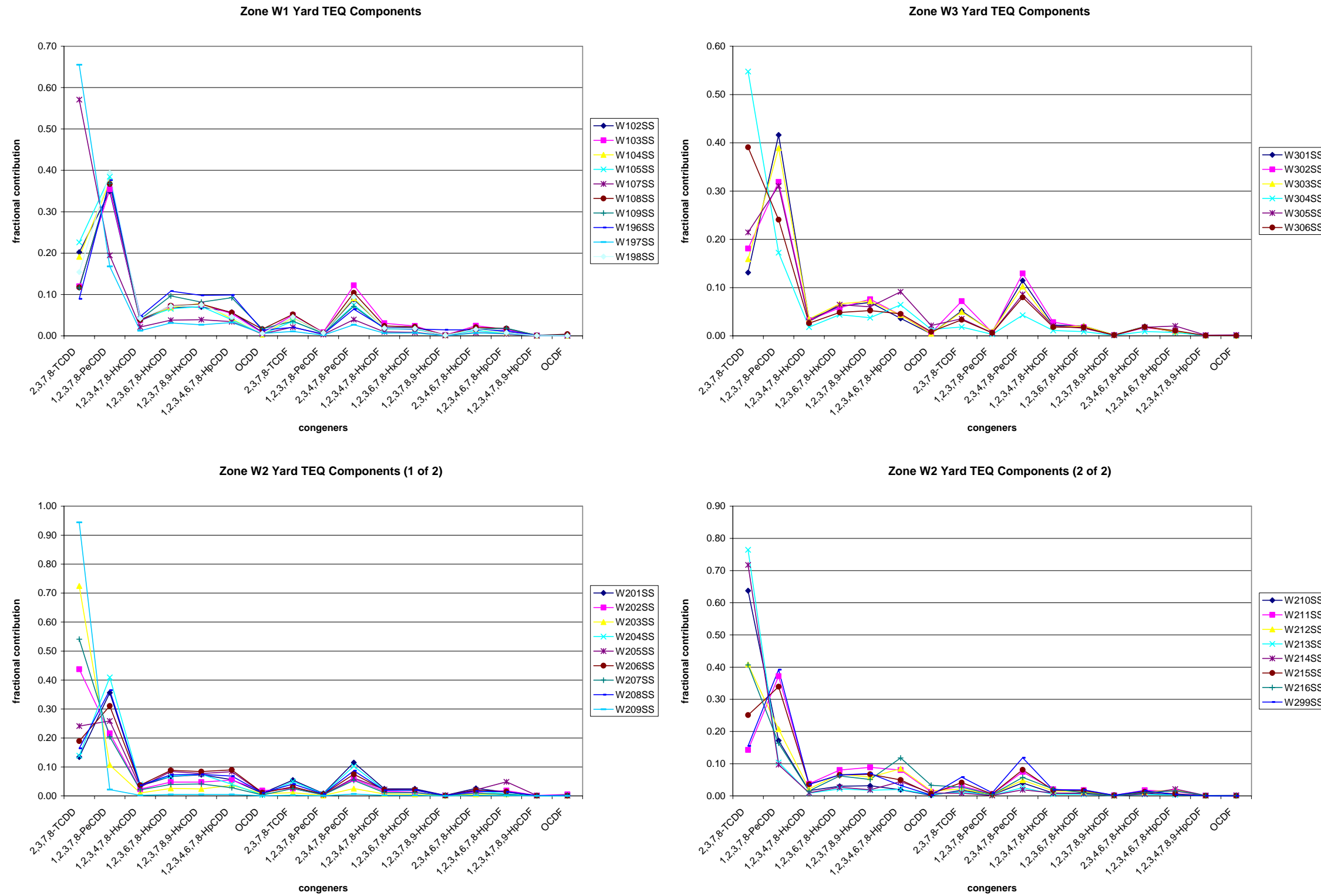


Figure 3-10. Line plots showing fractional contributions of congeners to TEQ results.

**Rayonier Mill Off-Property Soil Dioxin Study
Final Data Summary Technical Memorandum**

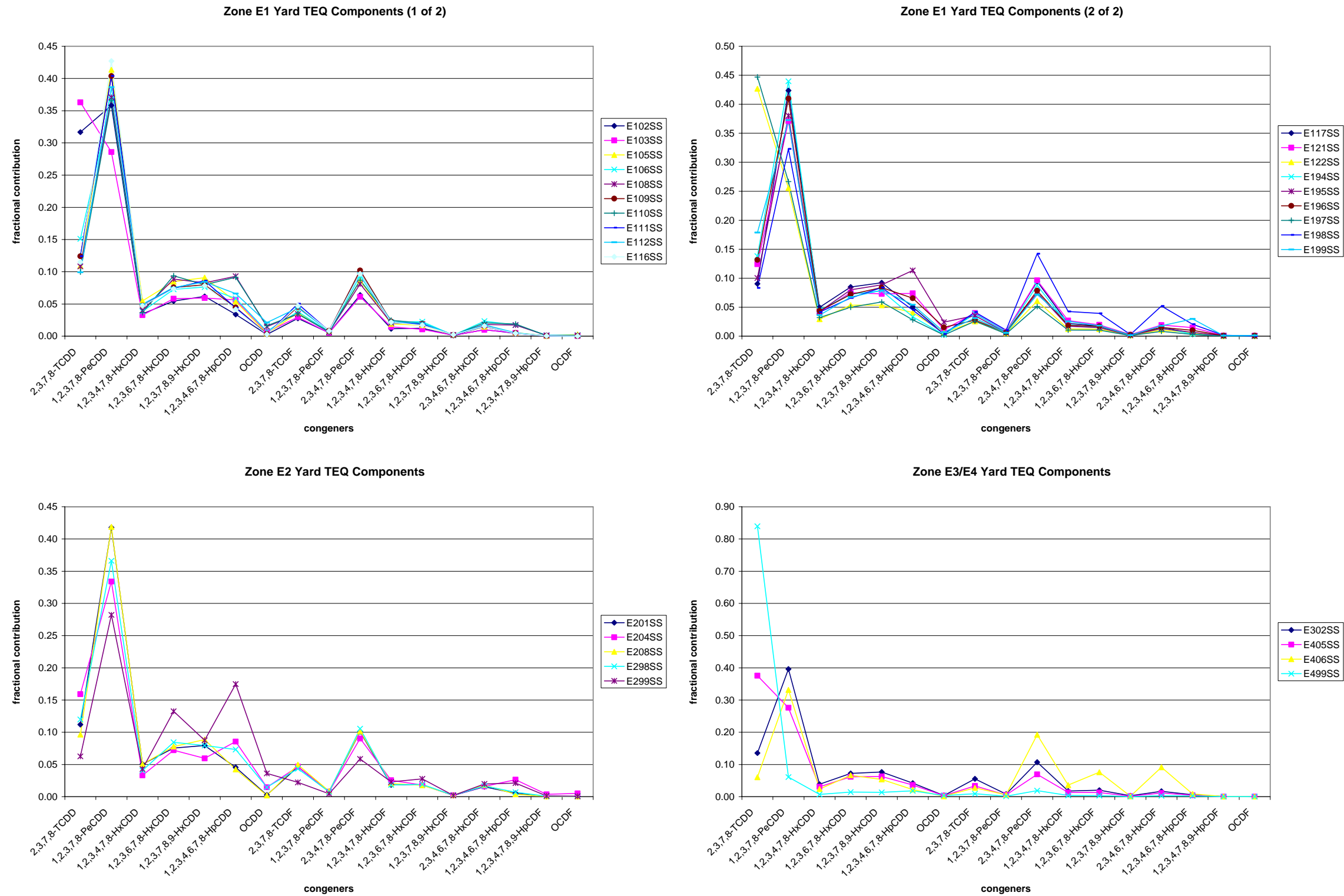


Figure 3-10 (continued). Line plots showing fractional contributions of congeners to TEQ results.

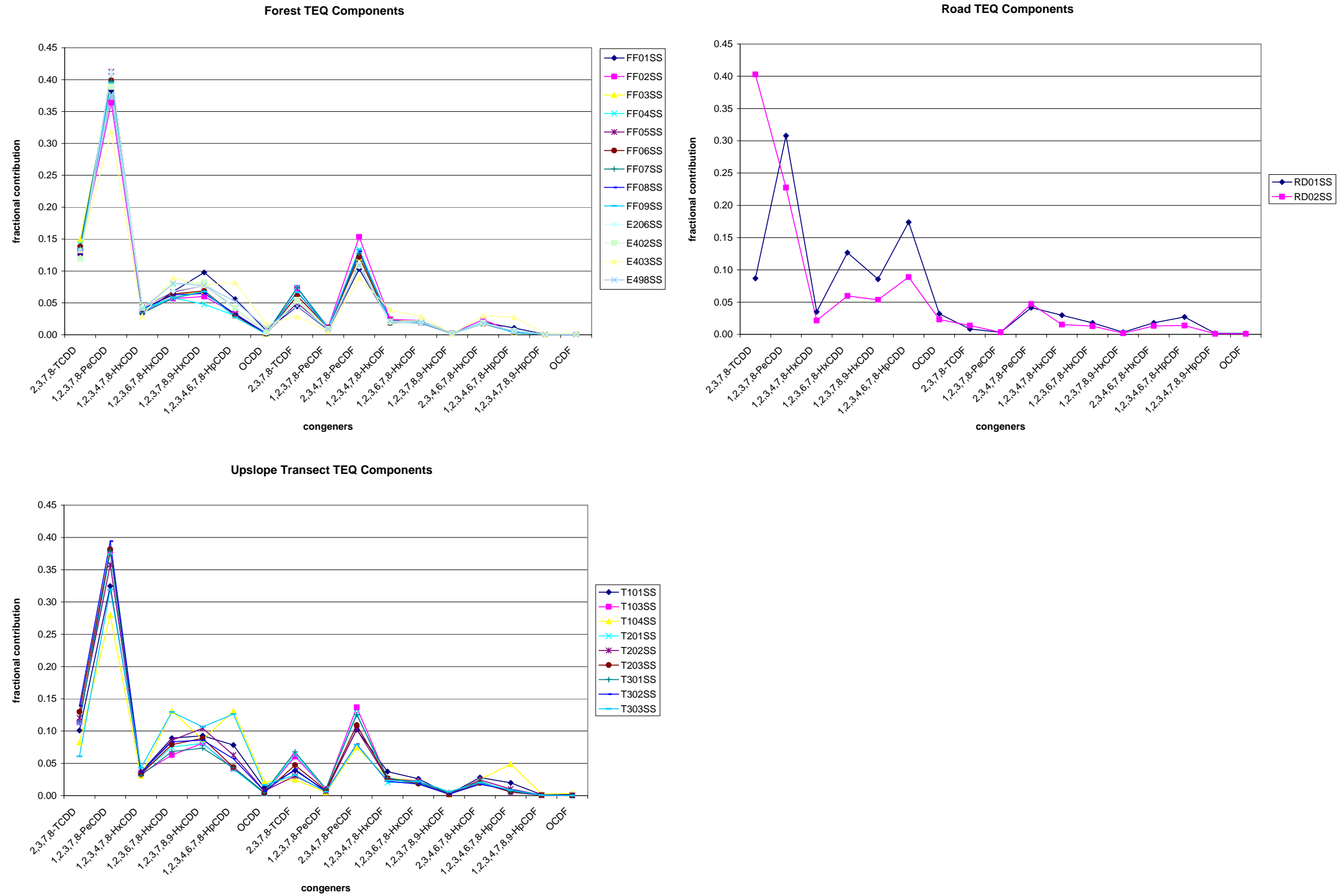


Figure 3-10 (continued). Line plots showing fractional contributions of congeners to TEQ results.