



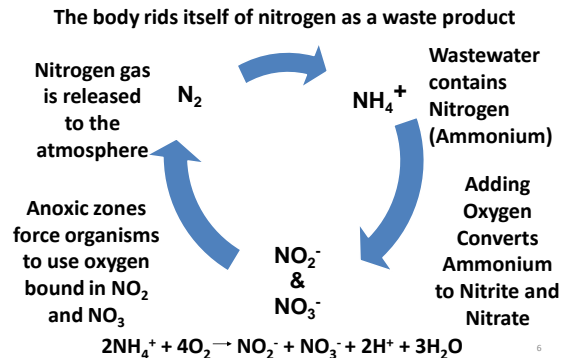
### Outfall Inspection Video



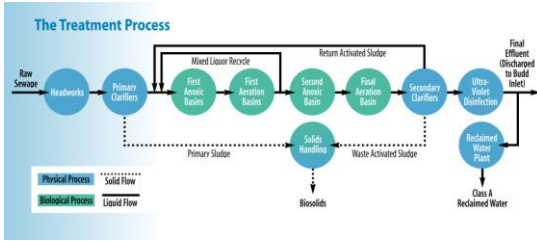
### Dye Testing



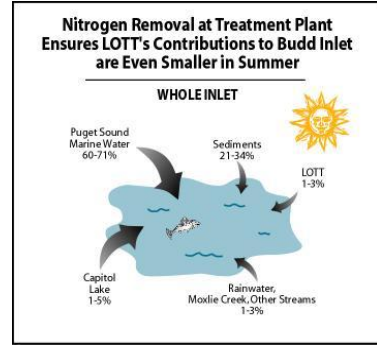
### The Nitrogen Cycle



## Biological Treatment Process \$45.9 Million in 1992-1994



7



8

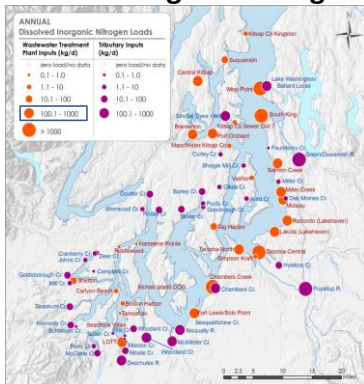
## Current Budd Inlet Treatment Plant Permit Limits

Parameter	Permit Limits	Loadings-Based Limits
Total Inorganic Nitrogen (Nitrate and Ammonia)	3 mg/L (since 1994)	338 lbs (shoulder season) 288 lbs (since 2005)
Nutrient Removal Season	April 1 <sup>st</sup> to October 31 <sup>st</sup>	
Summer Biochemical Oxygen Demand	7 mg/L	671 lbs
Spring and Fall Biochemical Oxygen Demand	8 mg/L	900 lbs

9



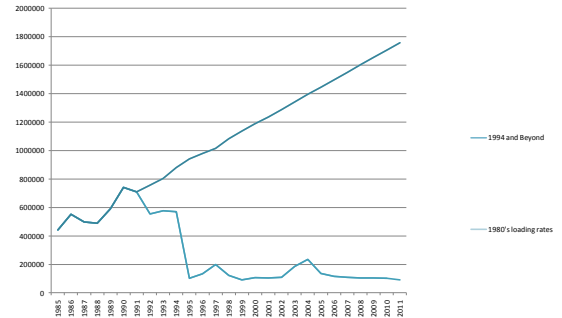
## LOTT's Nitrogen Loading on Budd Inlet



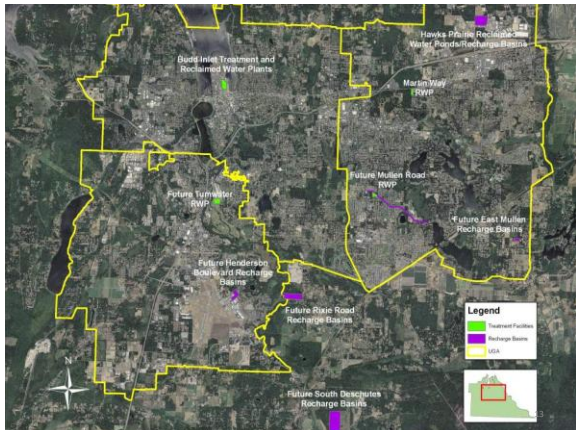
Source: Department of Ecology, South Puget Sound Dissolved Oxygen Study

11

## LOTT's Potential Nitrogen Loading on Budd Inlet



12



Laurie Pierce  
360-528-5727  
lauriepierce@lottcleanwater.org  
www.lottcleanwater.org