

History of Washington's Livestock Industry

Stock Water Work Group

September 3, 2009

Bob Lee, Senate Committee Services

Federal Land Policies

- 1785 Land Ordinance
 - Created township grid system
 - 36 sections per township – 36 miles square
 - 640 acres per section
 - Sections 16 and 36 reserved for schools

Federal Land Policies

1841 Preemption Act – purchase a 160 acres (quarter-section) for \$1.25 per acre

1845- 1861

- A. “Manifest Destiny” John O’Sullivan
- B. “Go west, young man, go forth into the country” Horace Greeley
- C. Free Soil Movement – George Henry Evans

Homestead Acts

1862 Homestead Act – grant of 160 acres by building house, making improvements and living on property for 5 years

- 1862-1986 - 270 million acres granted under various Homestead Acts

Federal Policies

- 1862 Pacific Railway Bill – land grants provided for construction of transcontinental railroad from Missouri River to Pacific Ocean.
- **1864 – Granting lands to aid in the construction of a railroad and telegraph line from Lake Superior to Puget Sound on the Pacific Coast by the northern route.**

Land Grants for Railroads

- Railroad received every other section of land for a distance on both sides of track.
- 1862-71 Land grants to railroads totaled 128 million acres nationwide.
- Much of railroad lands were sold to private individuals to finance construction of railroad.
- **9.5 million acres in Washington were granted for railroad construction.**

Miles of Railroad Track

- 1850 – 9,000 miles of track – nationwide
- 1885 – 87,000 miles of track - nationwide

Other Public Lands Designations

- National Forests
- Bureau of Land Management
- Land grants for state colleges and institutions
- Grants for common schools
- National Parks
- **Certain public lands were available for livestock grazing.**

Result of Federal Land Policies

- Many 160 acre homesteads were established
- Certain public lands leased for grazing
- Lands granted to railroads were sold.
 - Large acres of range land sold to sheep and cattle operations.
- Result of federal land policies – mixture of small, medium and large livestock operations.

Farms over 10,000 Acres in 1945

- California – 417
- Oregon – 245
- Washington - 120

Livestock Farms in 1945

Total number in Washington – 6,550

Total production of livestock

\$29.7M

Number of large livestock farms - 499

Production by large livestock farms

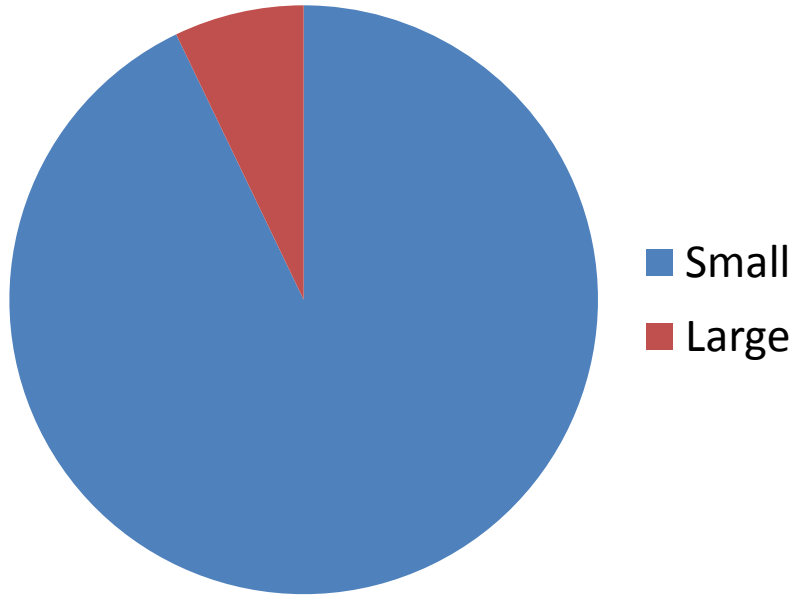
\$16.9 M

Large farms > \$10,000 gross sales

Livestock Farms in 1945

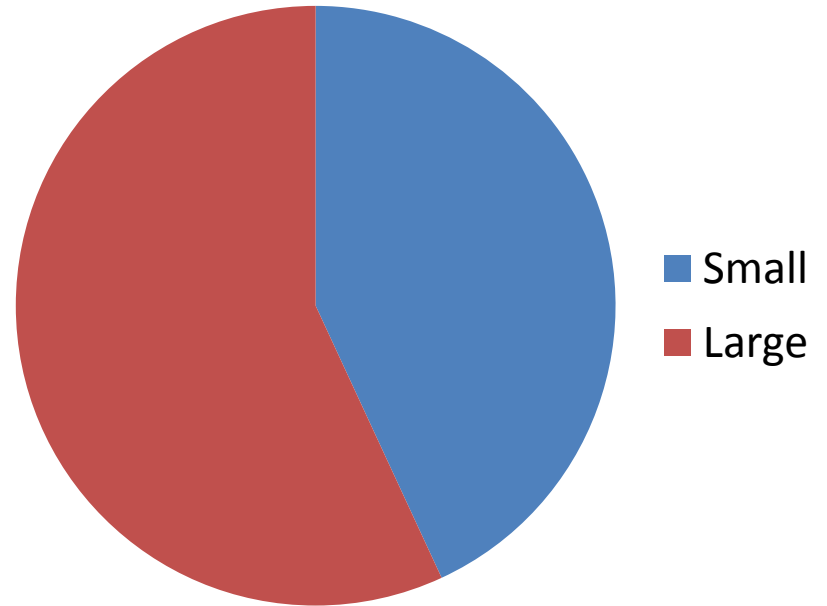
Large Farms > \$10,000 sales

Number



Livestock Production

Sales



1945 Stock Water Provision

“Except, however, That any withdrawal of public ground waters for stock-watering purposes, or for the watering of a lawn or of a non-commercial garden not exceeding one-half acre in area, or for single or group domestic uses in an amount not exceeding five thousand (5,000) gallons a day, or for an industrial purpose in an amount not exceeding five thousand (5,000) gallons a day,…”

Livestock Sectors

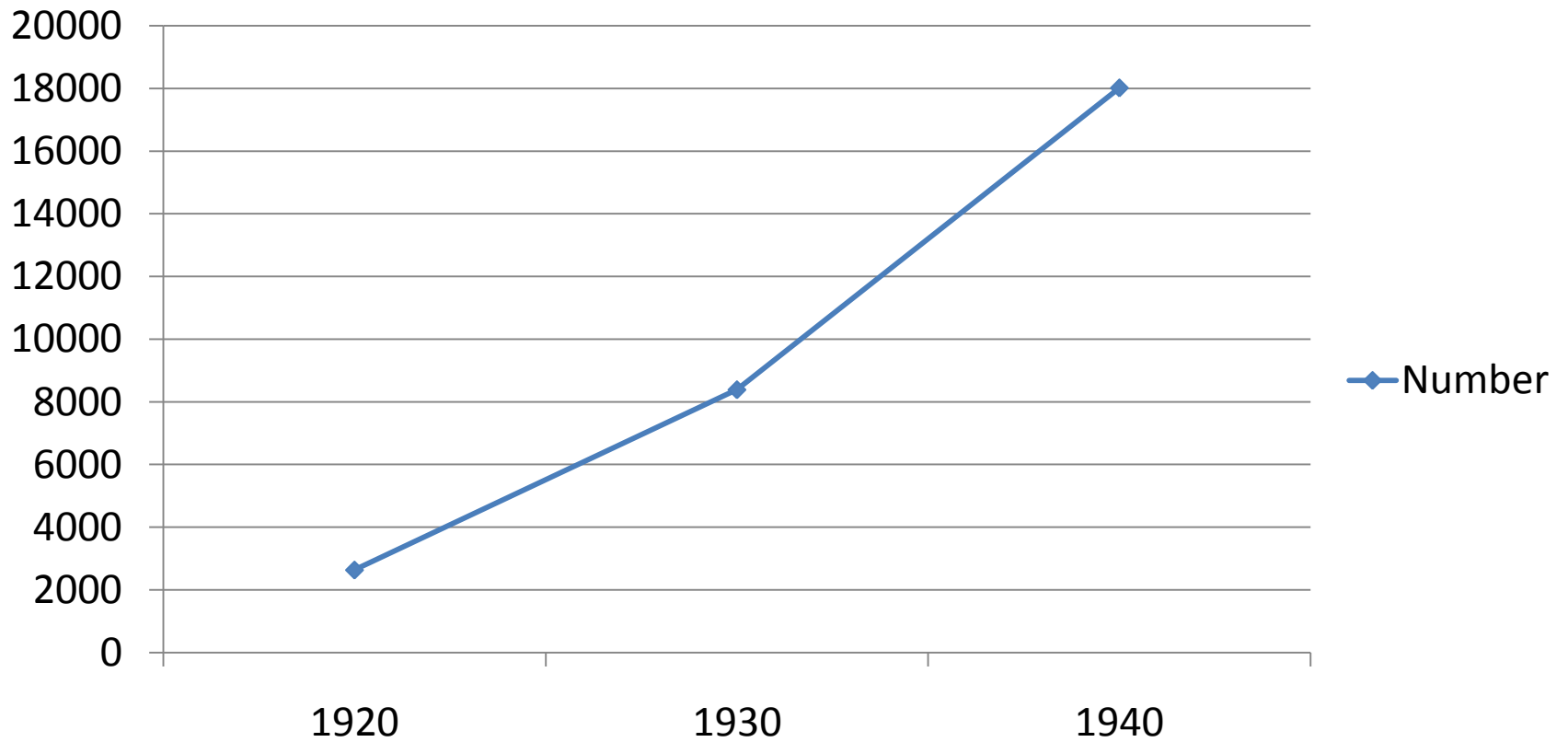
- Horses and mules
- Sheep
- Dairy cows
- Hogs
- Cattle and calves
- Poultry (layers and fryers, turkeys, etc.)
- Specialty livestock – llama, ratites etc.

Horses and Mules

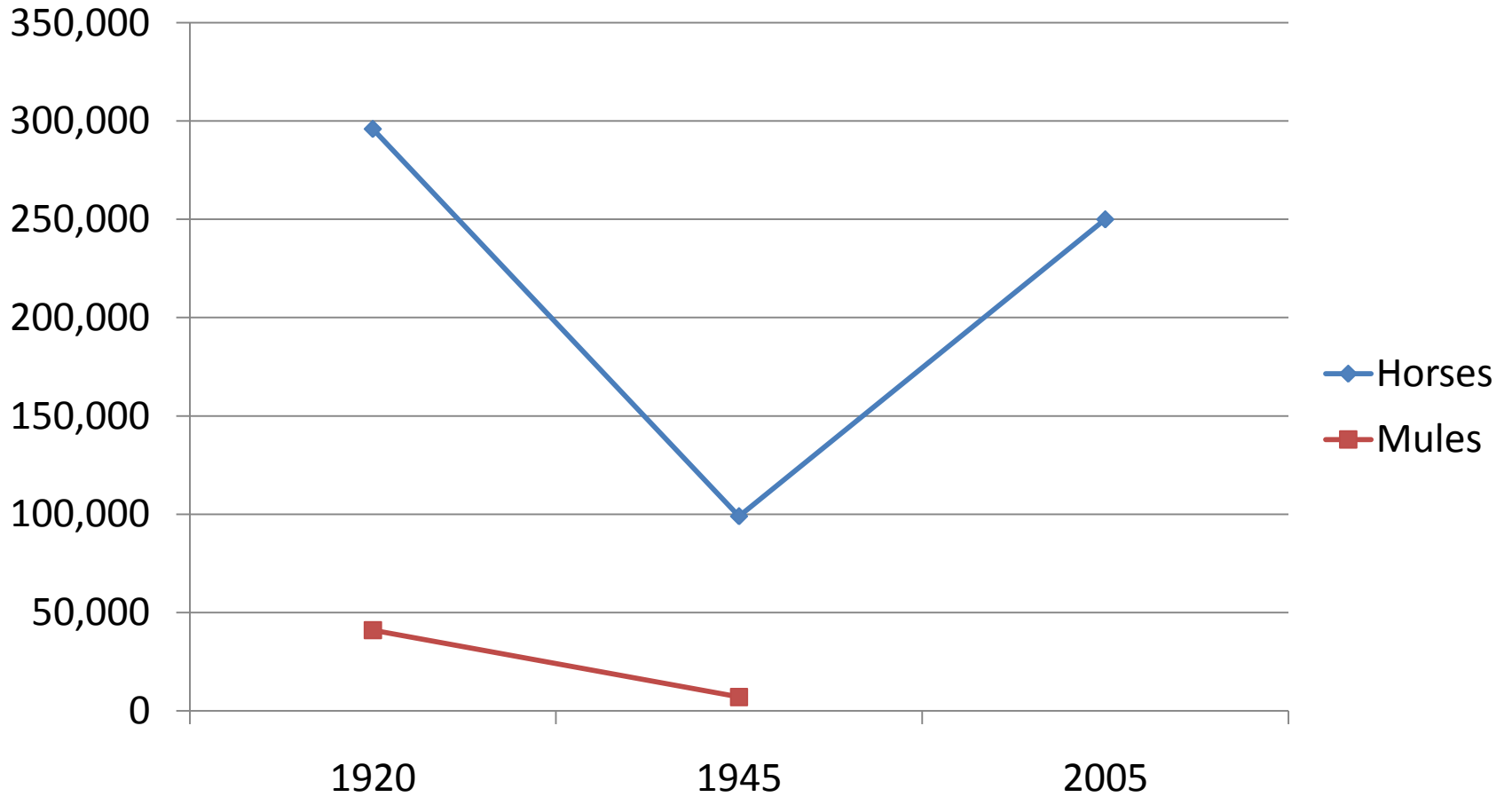
- Horses and mules transported goods and passengers in areas not served by trains.
- Horses and mules pulled farm implements until replaced by tractors.

Emergence of tractors

Number



Horses and Mules Washington



Sheep crossing Grand Coulee 1946

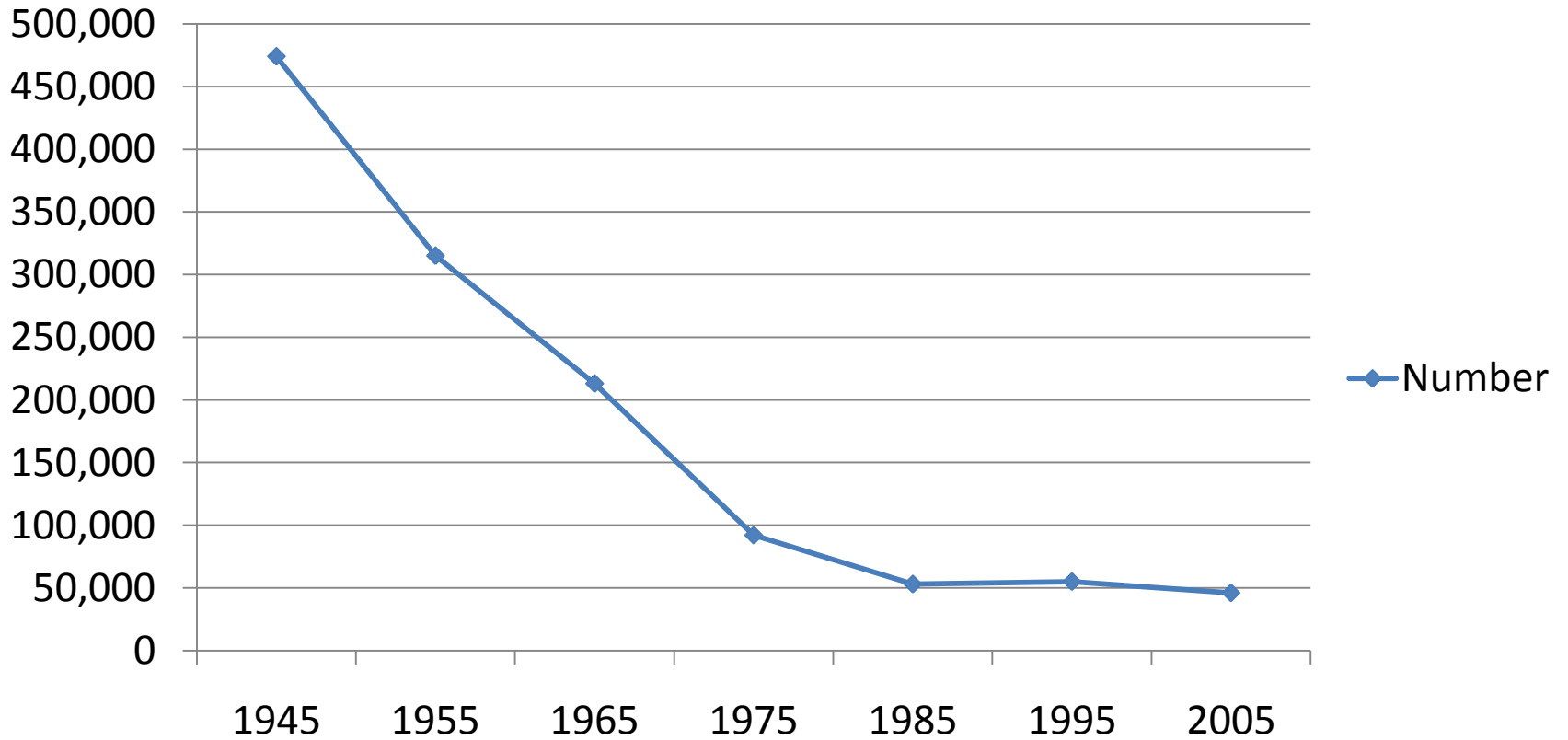


Sheep Industry in 1945

- Range operations – large bands would migrate 150 miles from winter range to summer range **across multiple ownerships**
- Ranch operations
- Washington Wool Growers Association membership shows larger sheep operations

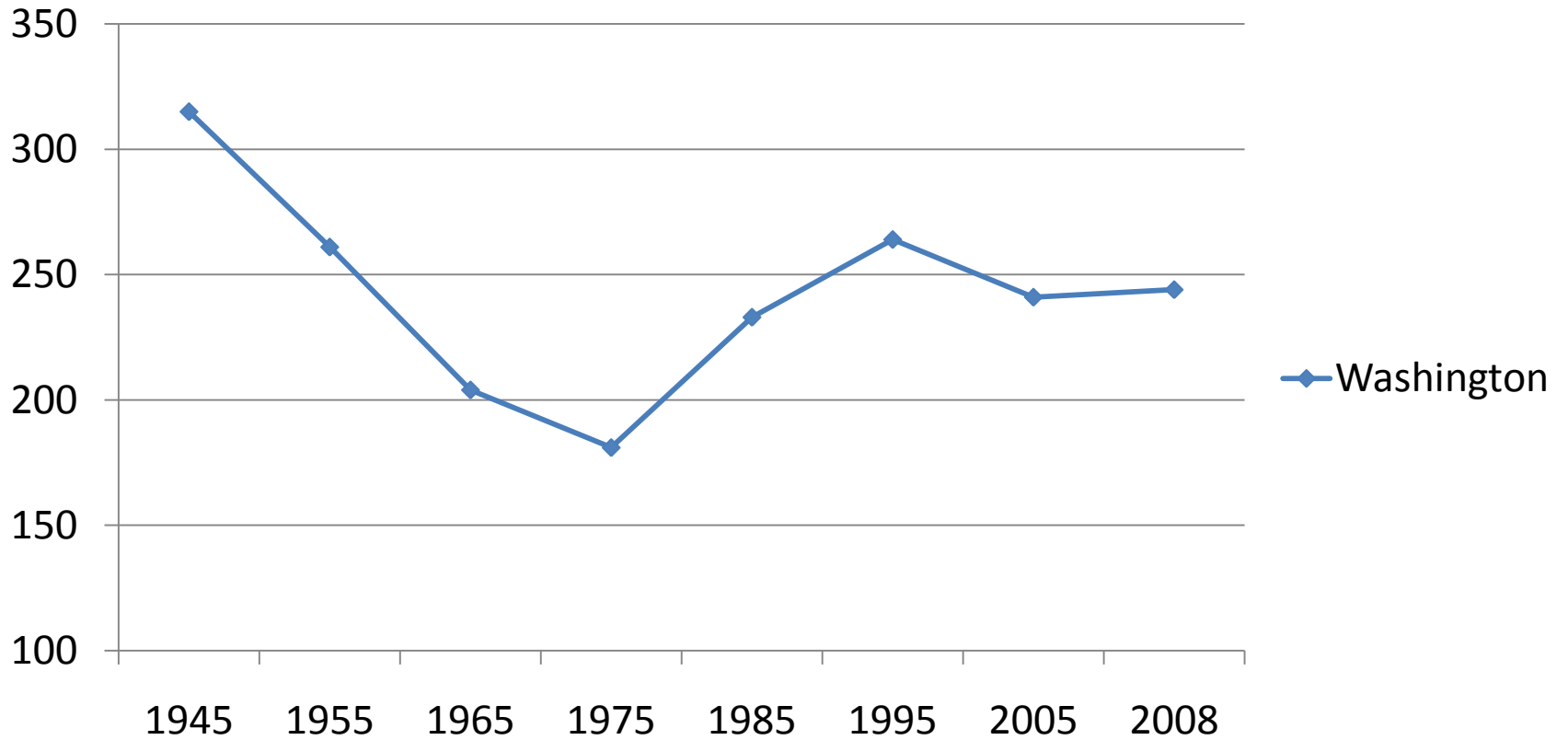
Sheep in Washington

Number



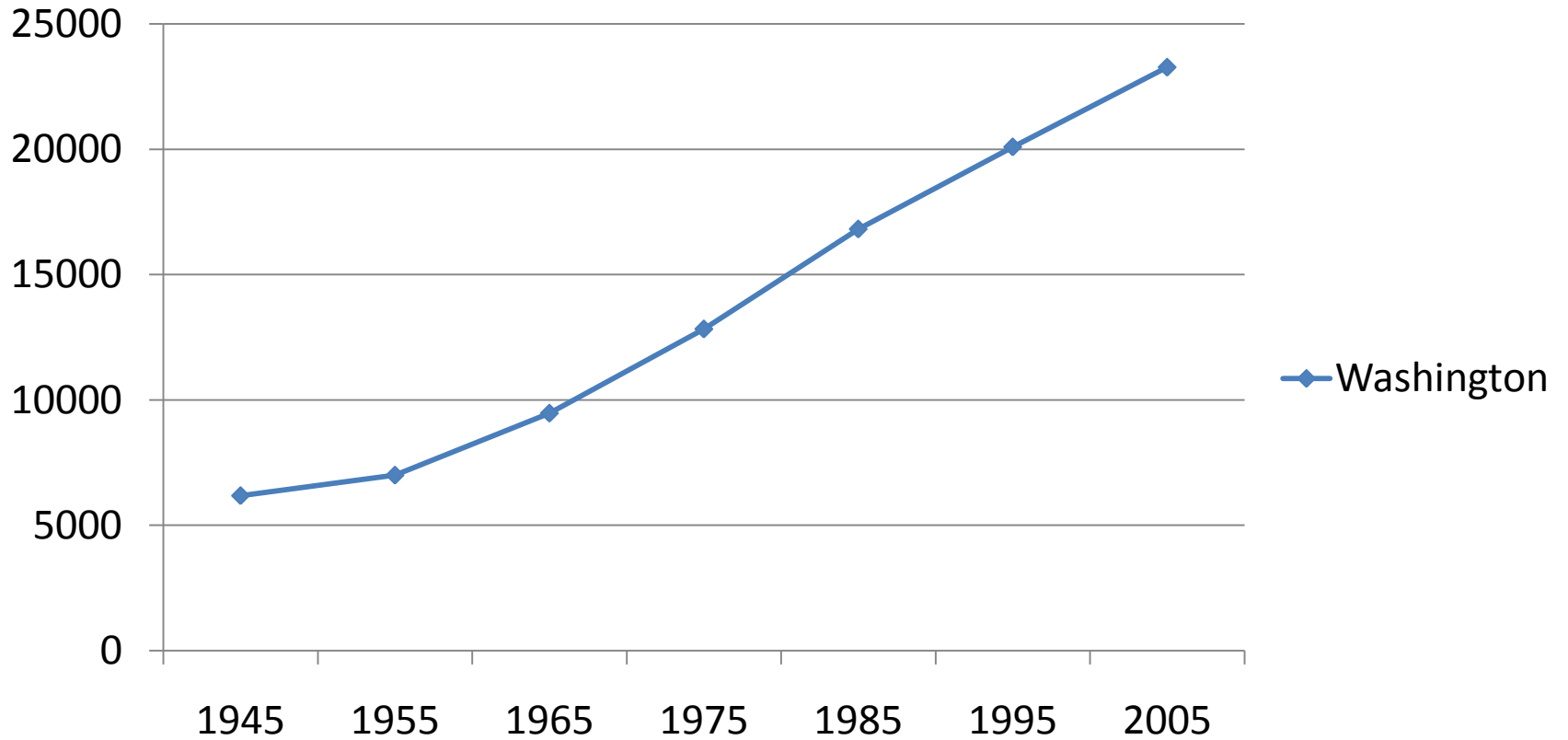
Washington Dairy Cows

In thousands



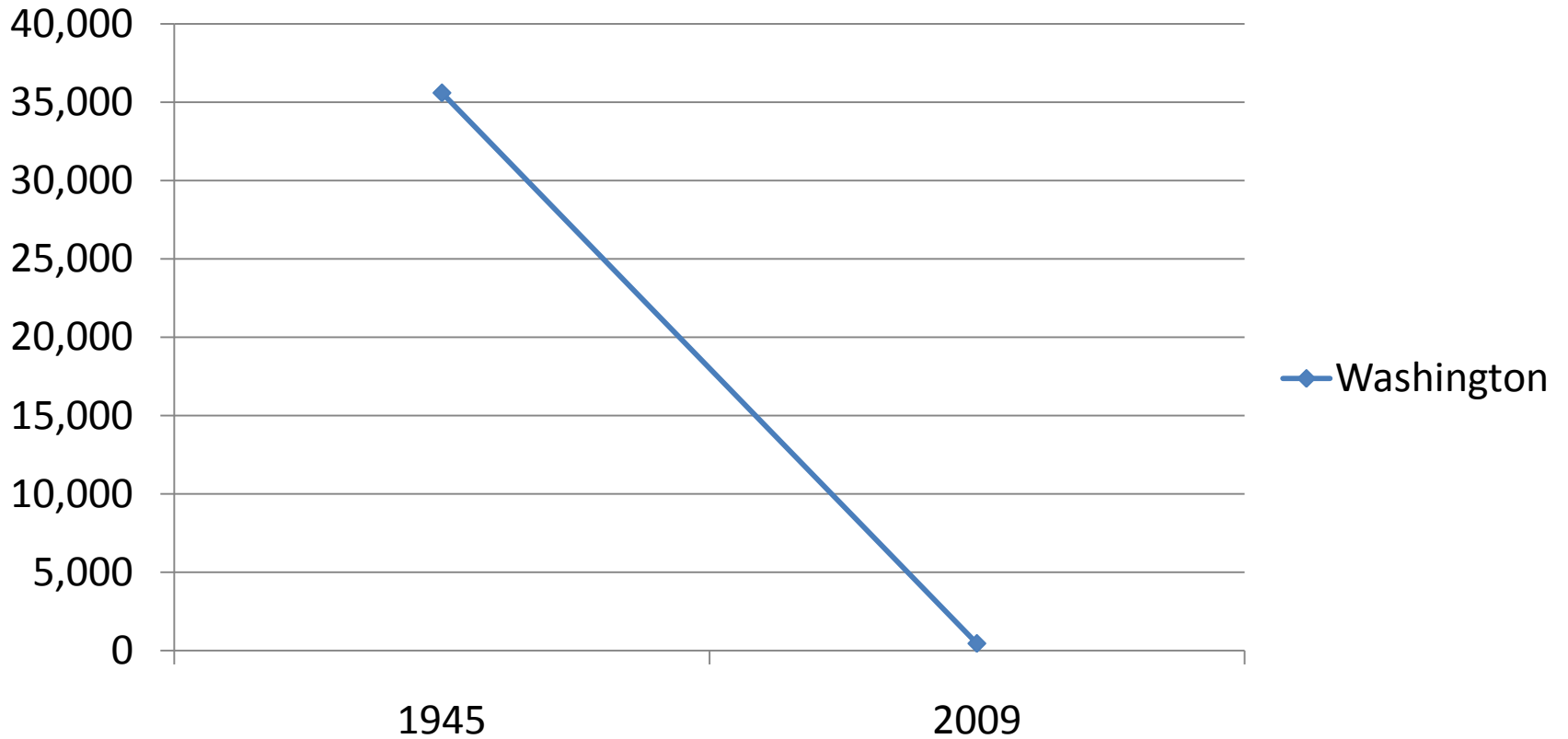
Milk per Cow

In pounds per year

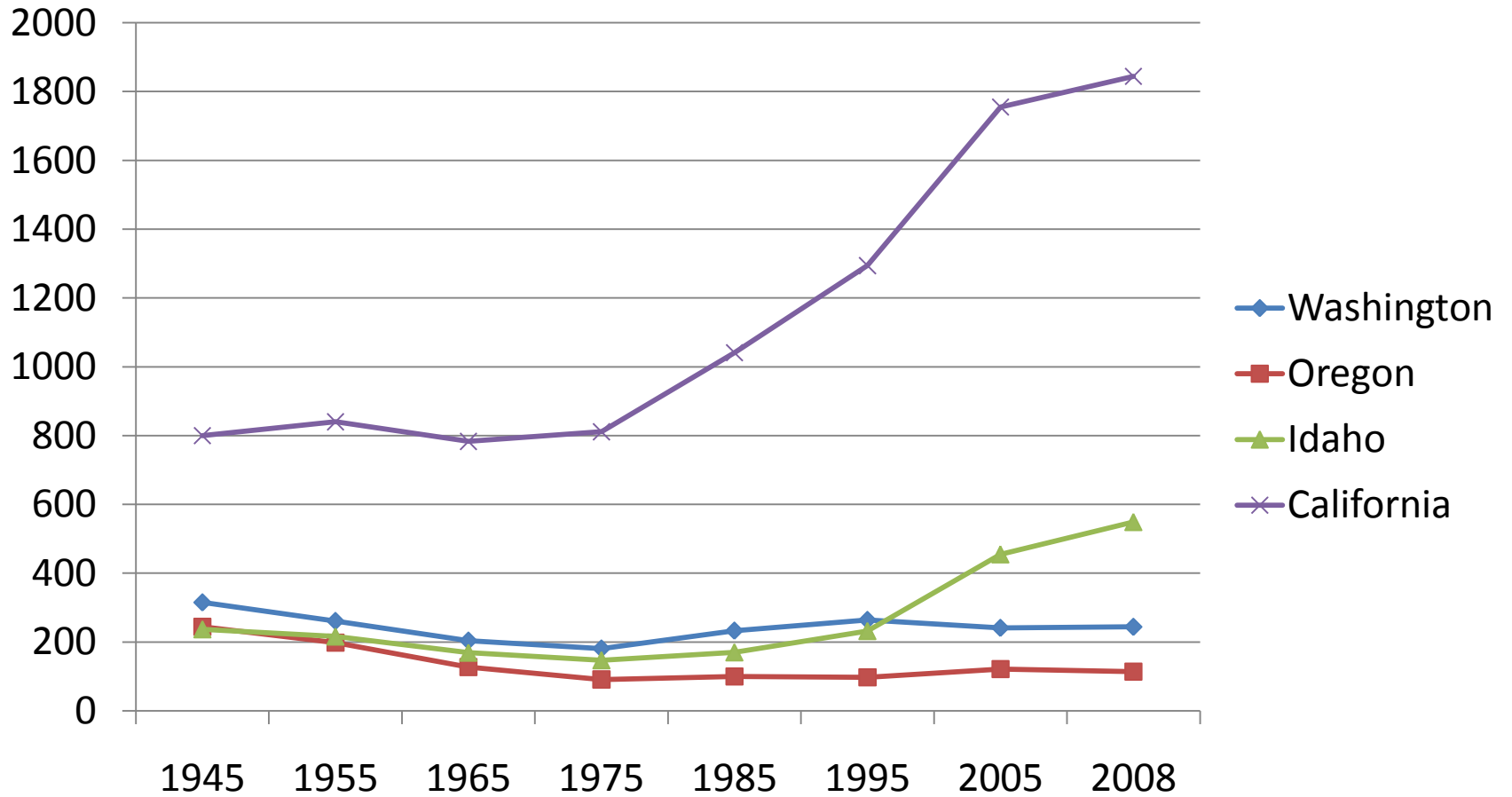


Number of Farms that Sold Milk

454 Dairy Farms Today

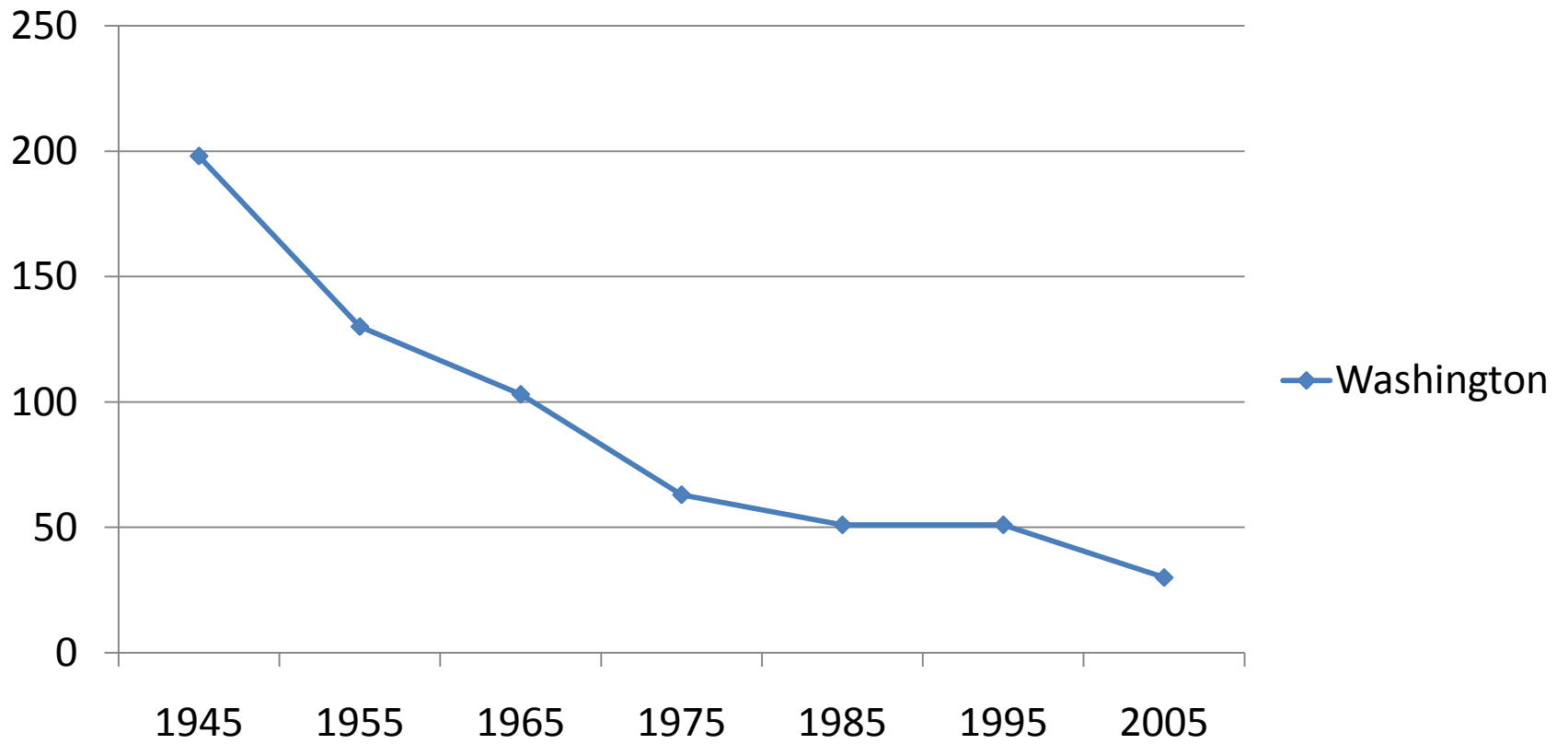


Dairy Cows



Hogs

In thousands



Cattle and Calves

Pasture and rangeland operations

Winter feeding operations

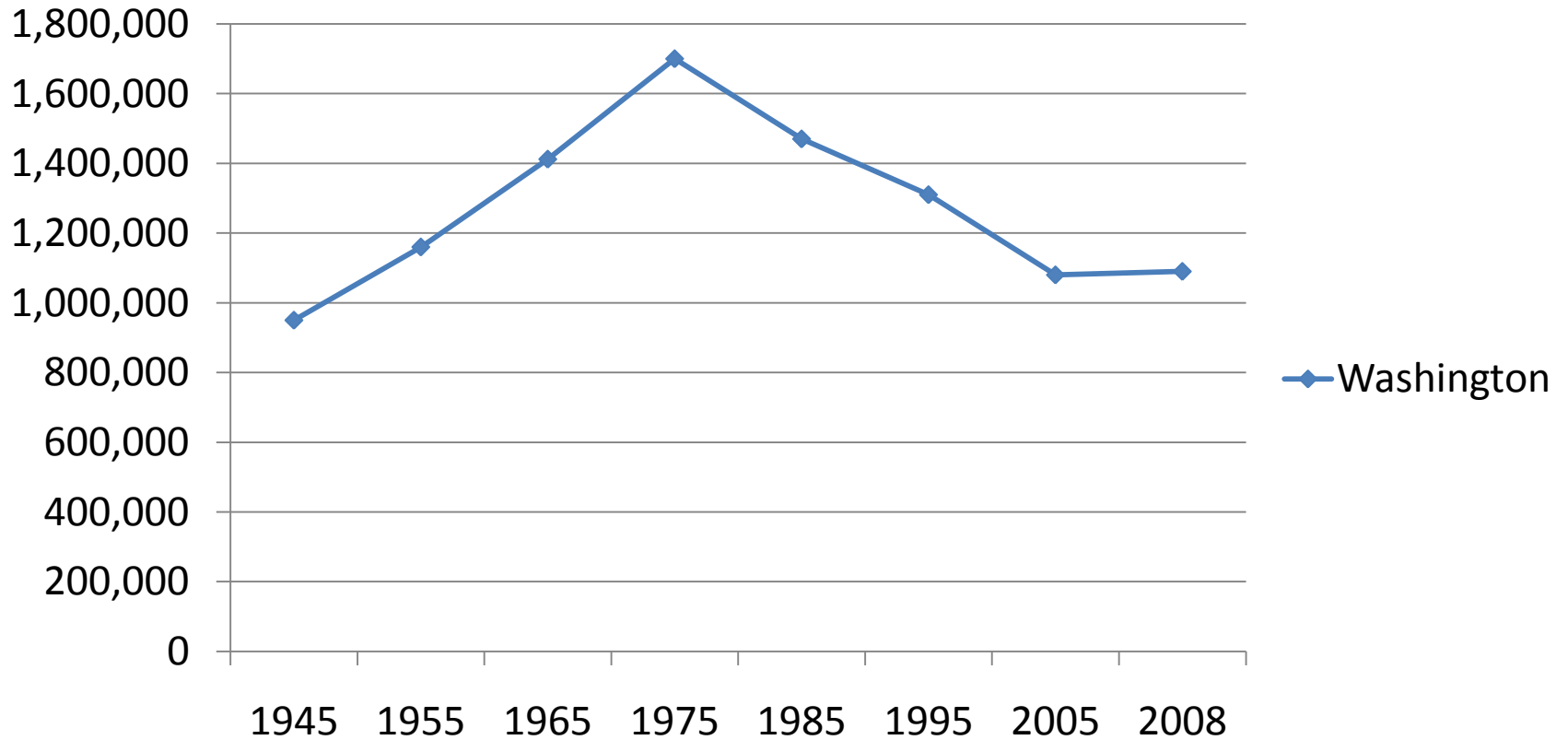
- Glean crop residues

- Hay or feed

Confined cattle feeding operations

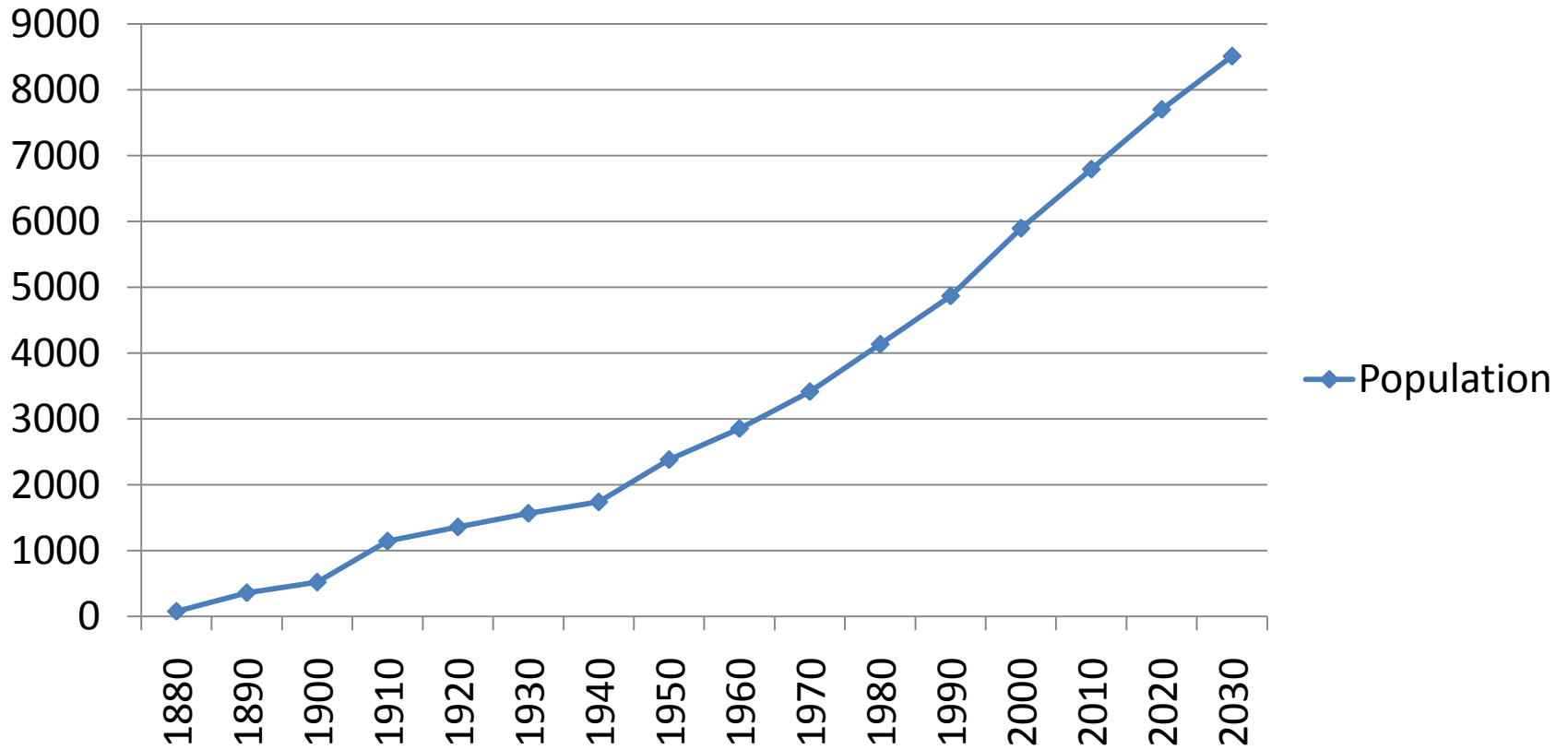
Cattle and Calves

Washington



State Population Growth

In thousands



Population Growth

- 1800-1945 2 million
- 1945-2009 4.6 million additional
- 2009-2030 1.9 million additional
- 2030 – 8.5 million total (OFM projection)

Summary

- Since 1945, statewide
 - Horses up 150,000 head + 151%
 - Current numbers are below the 1920 level
 - Ratio of horses to humans
 - 1920 1:4
 - 1945 1:18
 - 2005 1:27
 - Sheep down 428,000 head - 89 %
 - In 1945, the number of sheep to state residents was 1:4. Today, the ratio is 1:146
 - New Zealand and Australia are large exporters of lamb

Summary (cont)

- Since 1945, statewide
 - Dairy cows down by 71,000 head - 22 %
 - There has been a decrease in the number of dairies and an increase in average size of dairies
 - 1 dairy farm for every 15,000 people in Washington
 - Idaho has less than $\frac{1}{4}$ of the population but has more than double the number of dairy cows than Washington
 - Idaho's dairy industry has been growing and it is also located in the Columbia River basin

Summary (cont)

- Since 1945, statewide
 - Hogs down by 168,000 head - 70 %
 - Hog to people ration in 1945 was 1:10. Currently, the ratio is 1 hog to 233 people.
 - Midwestern state produce large number of hogs
 - Cattle /calf up 140,000 head + 15 %
 - Cattle to people ration in 1945 was 1:2.1. In 2008, the ratio is 1:6.1.
 - State population up 4.6 million + 235 %

Major Ag Data Sources

- United States Census of Agriculture
 - Washington State Library
 - Internet site below
- National Agricultural Statistics Service
 - <http://www.nass.usda.gov>

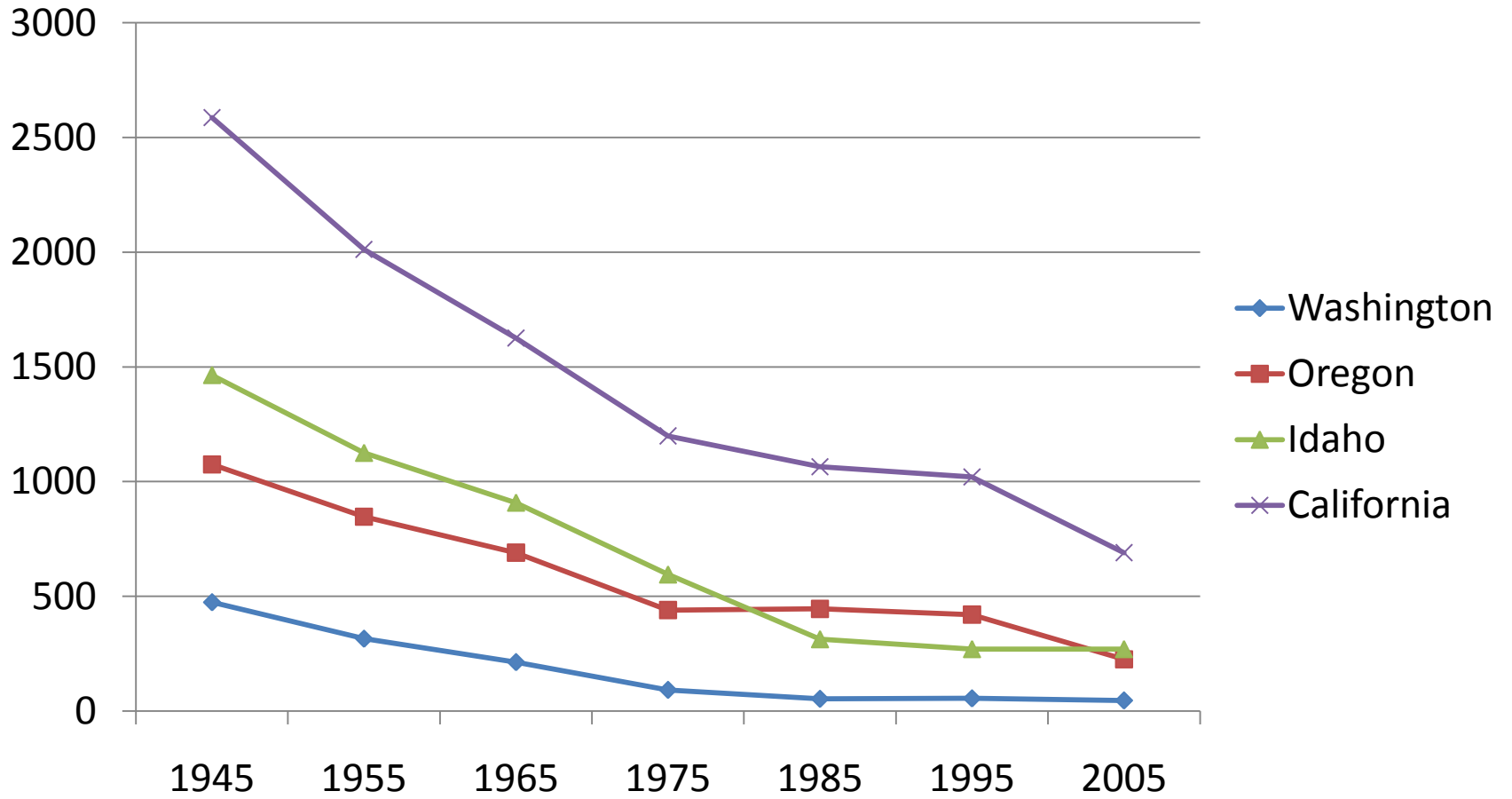
Bibliography

- Fahey, John. The Inland Empire: Unfolding Years, 1879-1929. Seattle and London: University of Washington Press. 1986.
- McGregor, Alexander Campbell. Counting Sheep: From Open Range to Agribusiness on the Columbia Plateau. Seattle and London: University of Washington Press. 1982.
- Jensen, Derrick.. Railroads and Clearcuts: Legacy of Congress's 1864 Northern Pacific Railroad Land Grant. Sandpoint, Id. Keokee Co. Publishing Inc. 1995.
- Sheller, Roscoe. Ben Snipes: Northwest Cattle King. Portland Ore. Binfords and Mort Publishing. 1957.
- Shadduck, Louise. Andy Little: Idaho Sheep King. Caldwell Id. Caxton Printers. 1990.

Bibliography (cont.)

- WWG Historical Committee. Custodians of the Land: Washington Wool Growers Association. 1984.
- Ben Snipes, Northwest Cattle King. HistoryLink.org. Essay 7265.
- DeRuwe, Milan. Raising sheep in eastern Washington: A Reminiscence. HistoryLink.org. Essay 8971.
- Paul, Virginia. This was Sheep Ranching: Yesterday and Today. Seattle. Superior Publishing Company. 1976.
 - This was Cattle Ranching: Yesterday and Today. Seattle. Superior Publishing Company. 1973.

Sheep Numbers



Cattle and Calves - All

