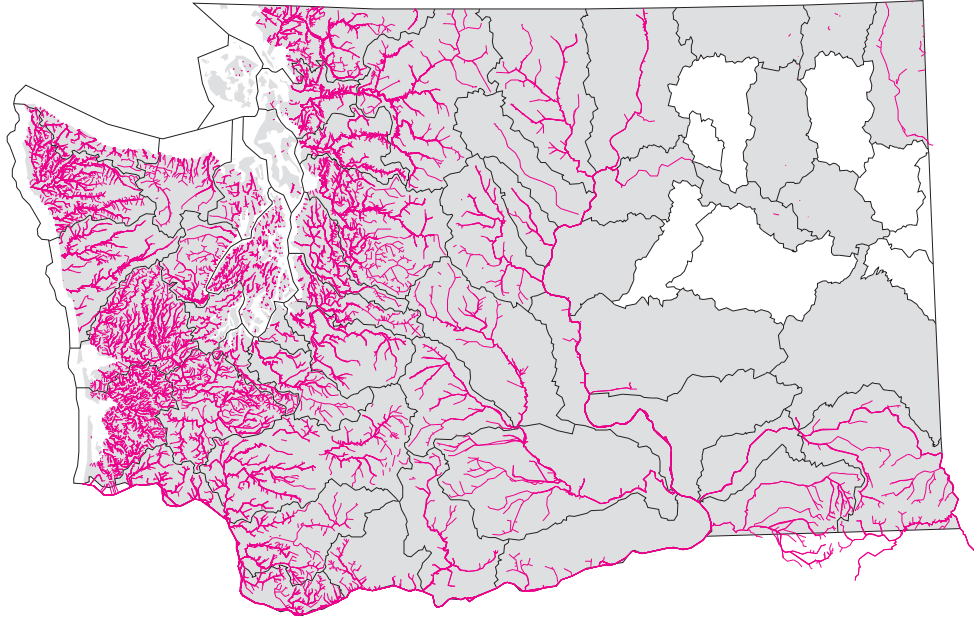


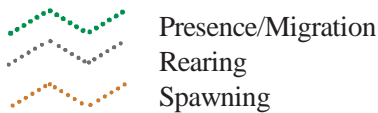
Salmonid Stock Inventory (SaSI) and Anadromous Fish Distribution Information Page



Salmonid Stock Inventory (SaSI) Status:



Anadromous Fish Distribution Use Type:



Fish passage barrier with total blockage



Species CODE - Name:

CHFA - Fall Chinook	PINK - Pink
CHSP - Spring Chinook	SOCK - Sockeye
CHSU - Summer Chinook	STSU - Summer Steelhead
CHMF - Fall Chum	STWI - Winter Steelhead
CHMS - Summer Chum	CCT - Coastal Cutthroat Trout
CHMW - Winter Chum	DBT - Dolly Varden/Bull Trout
COHO - Coho	

WDFW Anadromous Fish Data:
Salmonid Stock Status Inventory (SaSI) 2008, 1:24,000
Fish Distribution 2008, 1:24,000
Barriers 2008, 1:24,000
Facilities 2008, 1:24,000

Base Hydrography (str24) - WDFW 2008 1:24k
Water Resource Inventory Areas - ECOLOGY 2002 1:24K
County Boundaries - WDNR/ECOLOGY 2002 1:24K

Notes on SaSI WRIA Maps:

Each Salmonid species has it's own map based on WRIA area.
Not all WRIA areas have mapped SaSI data.

Barriers with total fish passage blockage for all species.

Salmonid Facility locations are shown by species.

Please refer to Washington Dept. of Fish & Wildlife (WDFW) website <http://wdfw.wa.gov/fish/sasi/> for more information or visit <http://wdfw.wa.gov/mapping/salmonscape> to view on-line mapping service.

Ecology does not distribute WDFW GIS data.

Endangered Species Act (ESA) listing status and State Species of Concern is show in RED for each affected species.
For more information on ESA see: <http://www.nwr.noaa.gov/>
For State Species of Concern see: <http://wdfw.wa.gov/wildlife/management/endangered.html>



GIS Technical Services
06/19/09
species-info